

## Product datasheet for **TA336826**

### Hsp60 (HSPD1) Rabbit Polyclonal Antibody

#### Product data:

Product Type:	Primary Antibodies
Applications:	FC, ICC/IF, IHC, Immunoblotting, Simple Western, WB
Recommended Dilution:	Immunohistochemistry: 1:100, Western Blot: 0.5 ug/ml, Immunohistochemistry-Paraffin: 1:100, Simple Western: 1:5000, Flow Cytometry, Immunoblotting, Knockdown Validated, Immunocytochemistry/ Immunofluorescence: 1:50-1:1000
Reactivity:	Human, Mouse, Rat, Hamster, Primate
Host:	Rabbit
Clonality:	Polyclonal
Immunogen:	A synthetic peptide made to an internal region of the human Hsp60 protein (within residues 70-150). [Swiss-Prot P10809]
Formulation:	PBS with 30% Glycerol, 0.05% Sodium Azide. Store at 4C short term. Aliquot and store at -20C long term. Avoid freeze-thaw cycles.
Concentration:	lot specific
Purification:	Affinity purified
Conjugation:	Unconjugated
Storage:	Store at -20°C as received.
Stability:	Stable for 12 months from date of receipt.
Gene Name:	heat shock protein family D (Hsp60) member 1
Database Link:	<a href="#">NP_002147</a> <a href="#">Entrez Gene 15510 Mouse</a> <a href="#">Entrez Gene 63868 Rat</a> <a href="#">Entrez Gene 3329 Human</a> <a href="#">P10809</a>
Background:	Heat shock protein 60 activates T cells and ultimately autoimmune actions and diseases. In gastric cancer, HSP60 is upregulated in malignant ascites that have been treated, and induces a tumor-specific cytotoxic T lymphocyte response. Enhancing Hsp60 expression is beneficial for protecting bone tissue against osteoblast apoptosis. Hsp60 is highly influenced by dietary intake of antioxidants, and is a prime target for many natural therapies against gut inflammation, preeclampsia, and some low level bacterial infections. Ischemia and reperfusion, as well as hypoxic environments can cause temporary elevations in Hsp60 expression levels.



[View online »](#)

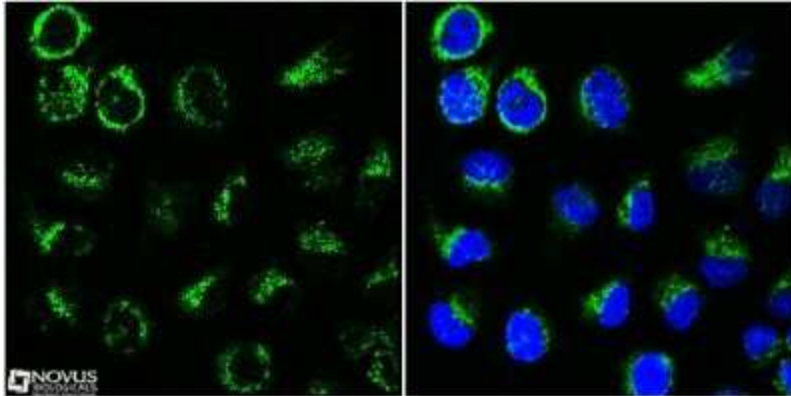
**Synonyms:** CPN60; GROEL; HLD4; HSP-60; HSP60; HSP65; HuCHA60; SPG13

**Note:** This Hsp60 antibody is useful for Immunocytochemistry/Immunofluorescence, Western Blot, and IHC-paraffin embedded sections. In Western Blot, a band is seen ~61 kDa representing Hsp60. Prior to immunostaining paraffin tissues, antigen retrieval with sodium citrate buffer (pH 6.0) is recommended.

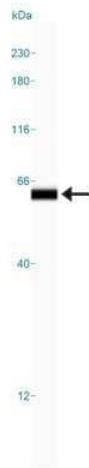
**Protein Families:** Druggable Genome, Stem cell - Pluripotency

**Protein Pathways:** RNA degradation, Type I diabetes mellitus

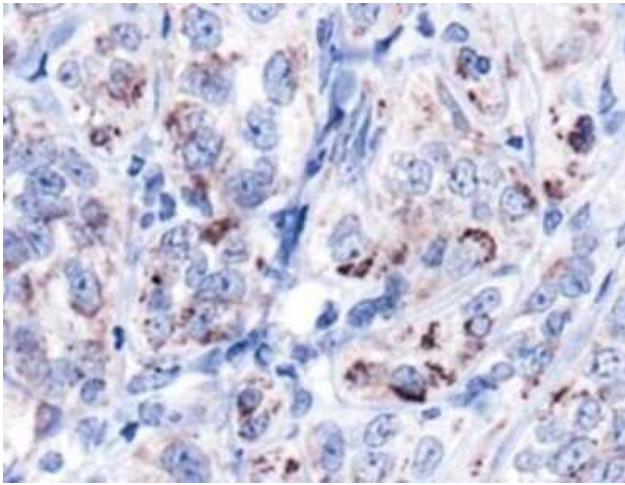
**Product images:**



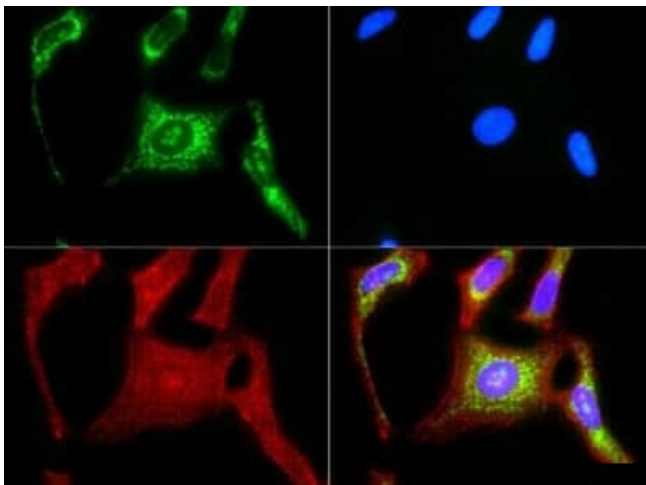
Immunocytochemistry/Immunofluorescence: HSP60 Antibody TA336826 - Confocal immunofluorescence analysis of HeLa cells using Hsp60 antibody at 1:50 (green). Nuclei were counterstained using DAPI (blue).



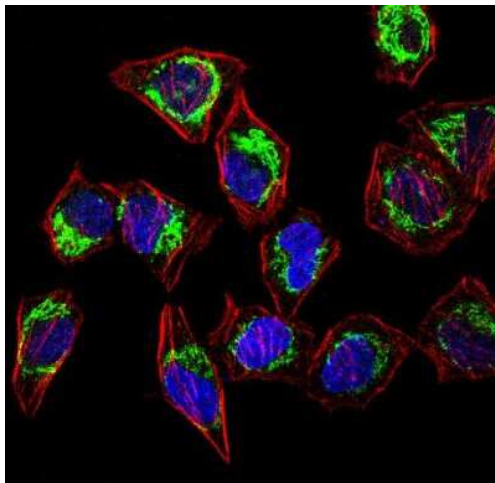
Simple Western: HSP60 Antibody TA336826 - Lane view shows a specific band for Hsp60 in 0.05 mg/ml of HepG2 lysate. This experiment was performed under reducing conditions using the 12-230 kDa separation system.



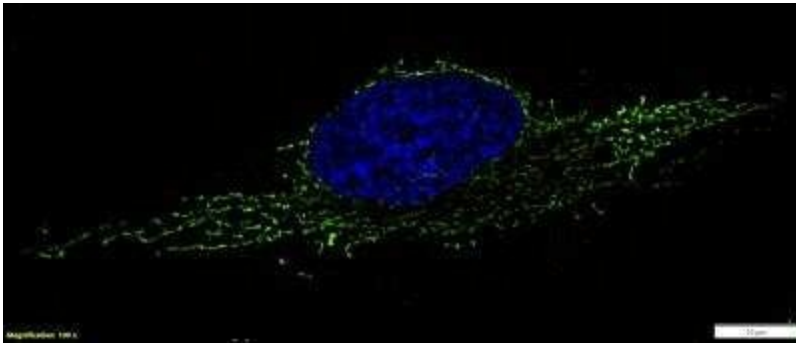
Immunohistochemistry: HSP60 Antibody TA336826 - Staining of HSP60 in human kidney carcinoma using DAB with hematoxylin counterstain.



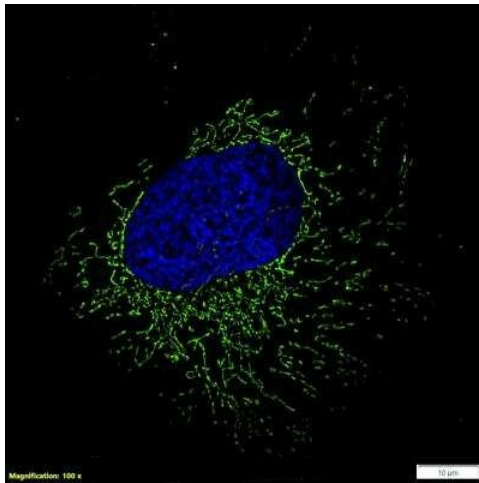
Immunocytochemistry/Immunofluorescence: HSP60 Antibody TA336826 - HSP60 antibody was tested in HeLa cells with FITC (green). Nuclei and actin were counterstained with DAPI (blue) and Phalloidin (red).



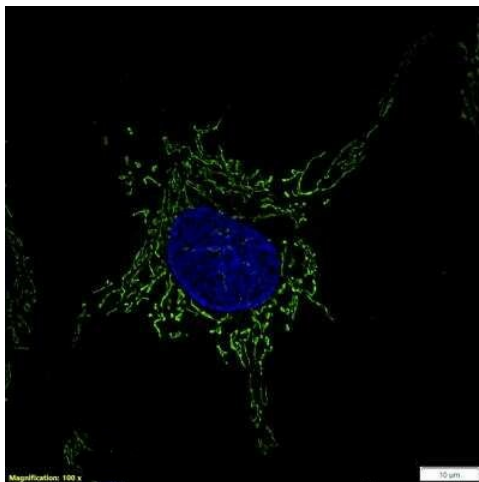
Immunocytochemistry/Immunofluorescence: HSP60 Antibody TA336826 - Confocal immunofluorescent analysis of HeLa cells using Hsp60 antibody (TA336826, 1:100). An Alexa Fluor 488-conjugated Goat to rabbit IgG was used as secondary antibody (green, A). Actin filaments were labeled with Alexa Fluor 568 phalloidin (red, B). DAPI was used to stain the cell nuclei (blue, C).



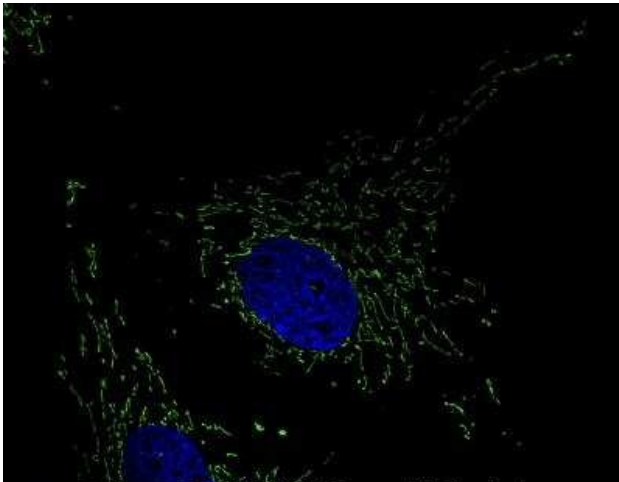
Immunocytochemistry/Immunofluorescence: HSP60 Antibody TA336826 - HeLa cells were fixed in 4% paraformaldehyde for 10 minutes and permeabilized in 0.05% Triton X-100 in PBS for 5 minutes. The cells were incubated with HSP60 Antibody conjugated to Alexa Fluor 488 (TA336826AF488) at 5 ug/ml for 1 hour at room temperature. Nuclei were counterstained with DAPI (Blue). Cells were imaged using a 100X objective and digitally deconvolved.



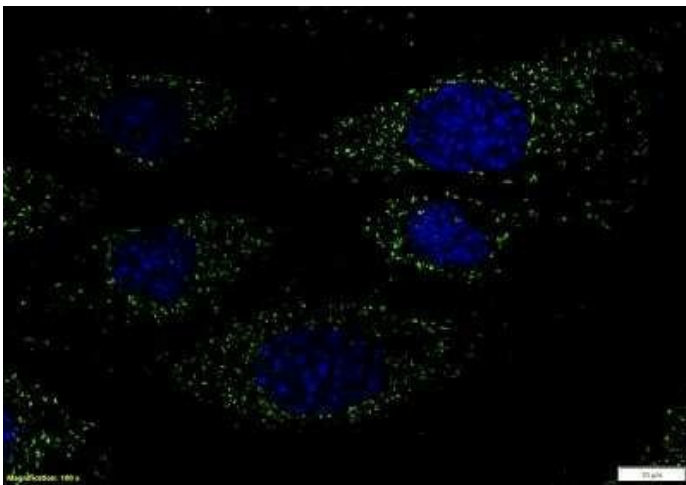
Immunocytochemistry/Immunofluorescence: HSP60 Antibody TA336826 - HeLa cells were fixed in 4% paraformaldehyde for 10 minutes and permeabilized in 0.05% Triton X-100 in PBS for 5 minutes. The cells were incubated with HSP60 Antibody (TA336826) at 1 ug/ml overnight at 4C and detected with an anti-rabbit DyLight 488 (Green) at a 1:1000 dilution for 60 minutes. Nuclei were counterstained with DAPI (Blue). Cells were imaged using a 100X objective and digitally deconvolved.



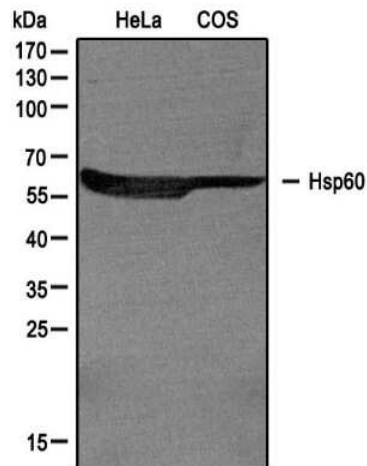
Immunocytochemistry/Immunofluorescence: HSP60 Antibody - BSA Free TA336826 - HepG2 cells were fixed in 4% paraformaldehyde for 10 minutes and permeabilized in 0.05% Triton X-100 in PBS for 5 minutes. The cells were incubated with HSP60 Antibody (TA336826) at 1ug/ml overnight at 4C and detected with an anti-rabbit DyLight 488 (Green) at a 1:1000 dilution for 60 minutes. Nuclei were counterstained with DAPI (Blue). Cells were imaged using a 100X objective and digitally deconvolved.



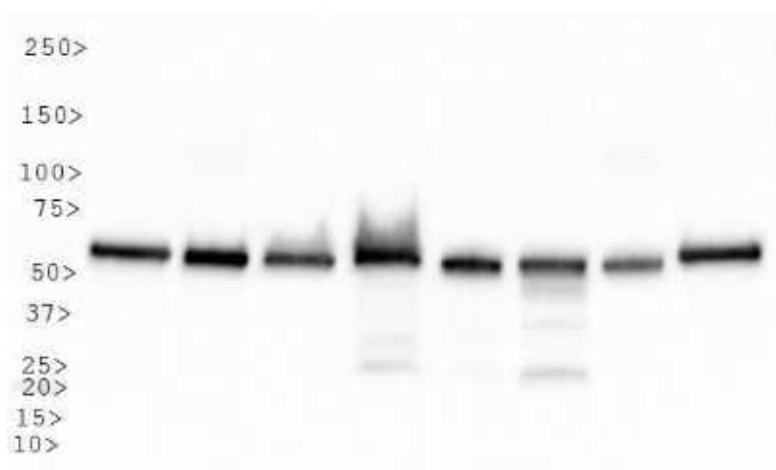
Immunocytochemistry/Immunofluorescence: HSP60 Antibody - BSA Free TA336826 - Rat FR cells were fixed in 4% paraformaldehyde for 10 minutes and permeabilized in 0.05% Triton X-100 in PBS for 5 minutes. The cells were incubated with HSP60 Antibody (TA336826) at 1ug/ml overnight at 4C and detected with an anti-rabbit DyLight 488 (Green) at a 1:1000 dilution for 60 minutes. Nuclei were counterstained with DAPI (Blue). Cells were imaged using a 100X objective and digitally deconvolved.



Immunocytochemistry/Immunofluorescence: HSP60 Antibody - BSA Free TA336826 - Mouse MS1 cells were fixed in 4% paraformaldehyde for 10 minutes and permeabilized in 0.05% Triton X-100 in PBS for 5 minutes. The cells were incubated with HSP60 Antibody (TA336826) at 2ug/ml overnight at 4C and detected with an anti-rabbit DyLight 488 (Green) at a 1:1000 dilution for 60 minutes. Nuclei were counterstained with DAPI (Blue). Cells were imaged using a 100X objective and digitally deconvolved.



Western Blot: HSP60 Antibody TA336826 - Analysis of extracts from HeLa and COS cells using TA336826 Hsp60 antibody at 1:1000



Western Blot: HSP60 Antibody TA336826 - Analysis of HSP60 in: 1) HeLa, 2) HepG2, 3) NIH/3T3, 4) Jurkat, 5) CHO, 6) A431, 7) PC12 and 8) COS7