

Product datasheet for **TA336825**

Hsp60 (HSPD1) Rabbit Polyclonal Antibody

Product data:

Product Type:	Primary Antibodies
Applications:	FC, ICC/IF, IHC, Simple Western, WB
Recommended Dilution:	Immunohistochemistry: 1:200, Immunocytochemistry/ Immunofluorescence: 1:1000, Immunohistochemistry-Paraffin: 1:200, Simple Western: 1:5000, Flow (Intracellular), Flow Cytometry, Western Blot: 0.5 ug/mL
Reactivity:	Human, Mouse, Rat, Hamster, Primate
Host:	Rabbit
Clonality:	Polyclonal
Immunogen:	A synthetic peptide made to an internal region of the human Hsp60 protein (within residues 300-360). [Swiss-Prot P10809]
Formulation:	PBS with 30% Glycerol, 0.05% Sodium Azide. Store at 4C short term. Aliquot and store at -20C long term. Avoid freeze-thaw cycles.
Concentration:	lot specific
Purification:	Affinity purified
Conjugation:	Unconjugated
Storage:	Store at -20°C as received.
Stability:	Stable for 12 months from date of receipt.
Gene Name:	heat shock protein family D (Hsp60) member 1
Database Link:	NP_002147 Entrez Gene 15510 Mouse Entrez Gene 63868 Rat Entrez Gene 3329 Human P10809
Background:	Heat shock protein 60 activates T cells and ultimately autoimmune actions and diseases. In gastric cancer, Hsp60 is upregulated in malignant ascites that have been treated, and induces a tumor-specific cytotoxic T lymphocyte response. Enhancing Hsp60 expression is beneficial for protecting bone tissue against osteoblast apoptosis. Hsp60 is highly influenced by dietary intake of antioxidants, and is a prime target for many natural therapies against gut inflammation, preeclampsia, and some low level bacterial infections. Ischemia and reperfusion, as well as hypoxic environments can cause temporary elevations in Hsp60 expression levels.



[View online »](#)

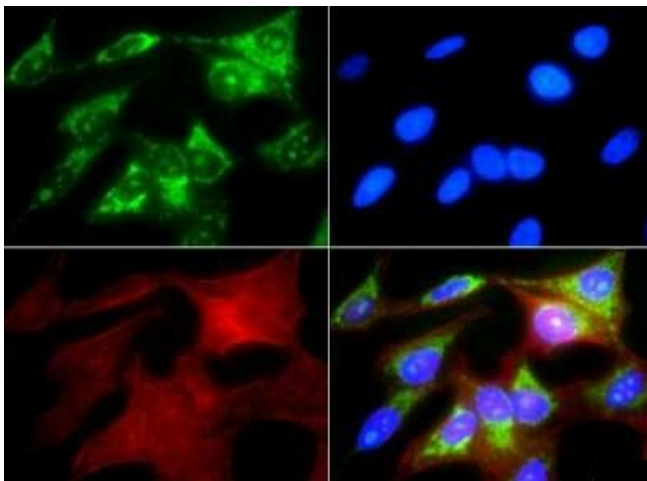
Synonyms: CPN60; GROEL; HLD4; HSP-60; HSP60; HSP65; HuCHA60; SPG13

Note: This Hsp60 antibody is useful for Immunocytochemistry/Immunofluorescence, Western Blot, and IHC-paraffin embedded sections. In Western Blot, a band is seen ~61 kDa representing Hsp60. Prior to immunostaining paraffin tissues, antigen retrieval with sodium citrate buffer (pH 6.0) is recommended.

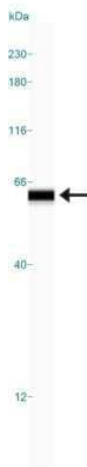
Protein Families: Druggable Genome, Stem cell - Pluripotency

Protein Pathways: RNA degradation, Type I diabetes mellitus

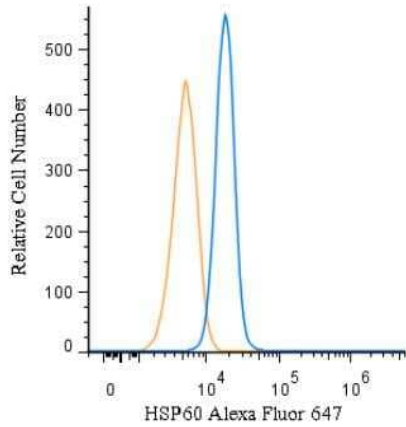
Product images:



Immunocytochemistry/Immunofluorescence: HSP60 Antibody TA336825 - Antibody was tested in HeLa cells with FITC (green). Nuclei and actin were counterstained with DAPI (blue) and Phalloidin (red).



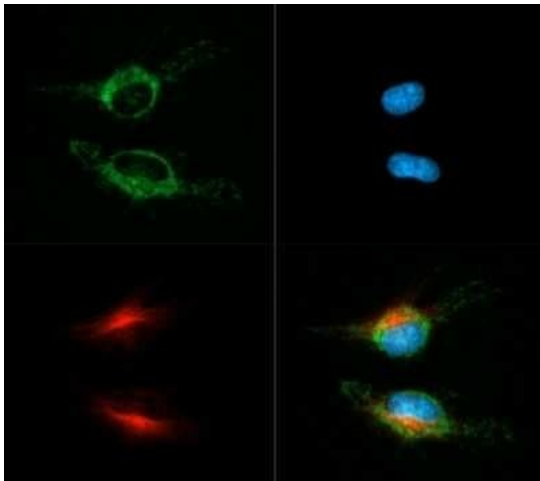
Simple Western: HSP60 Antibody TA336825 - Image shows a specific band for Hsp60 in 0.05 mg/mL of HepG2 lysate. This experiment was performed under reducing conditions using the 12-230 kDa separation system.



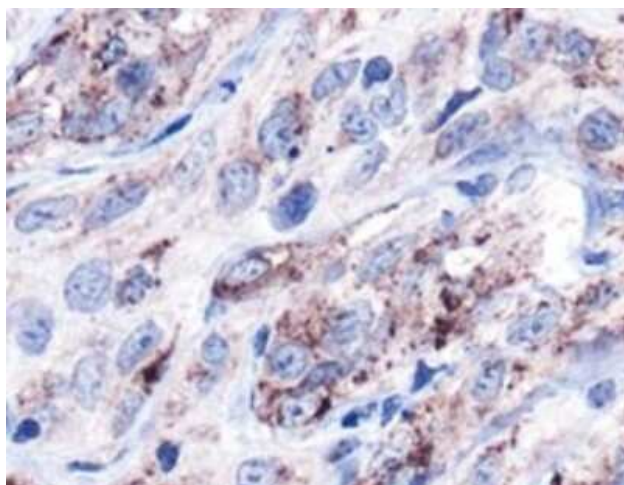
Flow (Intracellular): HSP60 Antibody TA336825 - An intracellular stain was performed on HeLa cells with HSP60 Antibody TA336825AF647 (blue) and a matched isotype control (orange). Cells were fixed with 4% PFA and then permeabilized with 0.1% saponin. Cells were incubated in an antibody dilution of 5 ug/mL for 30 minutes at room temperature. Both antibodies were conjugated to Alexa Fluor 647.



Western Blot: HSP60 Antibody TA336825 - Analysis of HSP60 in: 1. HeLa, 2. HepG2, 3. NIH/3T3, 4. Jurkat, 5. CHO, 6. A431, 7. PC12 and 8. COS7



Immunocytochemistry/Immunofluorescence: HSP60 Antibody TA336825 - Hsp60 antibody was tested in HeLa cells with Dylight 488 (green). Nuclei and alpha-tubulin were counterstained with DAPI (blue) and Dylight 550 (red).



Immunohistochemistry: HSP60 Antibody TA336825 - IHC staining of HSP60 in human kidney carcinoma using DAB with hematoxylin counterstain.