

## Product datasheet for **TA336822**

### Stathmin 1 (STMN1) Rabbit Polyclonal Antibody

#### Product data:

Product Type:	Primary Antibodies
Applications:	ELISA, ICC/IF, IHC, WB
Recommended Dilution:	Immunocytochemistry/ Immunofluorescence, Knockout Validated, Immunohistochemistry: 1:100 - 1:250, Western Blot: 0.5-1 ug/ml, Immunohistochemistry-Paraffin: 1:100 - 1:250, ELISA: 1:100-1:2000
Reactivity:	Human, Mouse, Rat
Host:	Rabbit
Clonality:	Polyclonal
Immunogen:	A synthetic peptide made to an C-terminal portion of the human Stathmin 1 protein (between residues 100-149) [UniProt P16949]
Formulation:	PBS, 0.05% Sodium Azide. Store at 4C short term. Aliquot and store at -20C long term. Avoid freeze-thaw cycles.
Concentration:	lot specific
Purification:	Immunogen affinity purified
Conjugation:	Unconjugated
Storage:	Store at -20°C as received.
Stability:	Stable for 12 months from date of receipt.
Predicted Protein Size:	17 kDa
Gene Name:	stathmin 1
Database Link:	<a href="#">NP_981944</a> <a href="#">Entrez Gene 16765 MouseEntrez Gene 29332 RatEntrez Gene 3925 Human P16949</a>



[View online »](#)

**Background:**

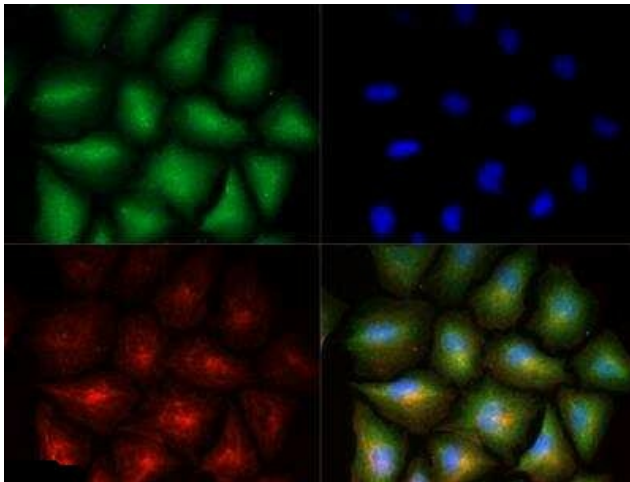
Stathmin 1 (STMN1), also known as leukemia-associated phosphoprotein p18, metablastin, oncoprotein 18 (op18), phosphoprotein p19, prosolin, protein Pr22, and pp17, is a member of the stathmin family that encodes a ubiquitous cytosolic phosphoprotein that functions as an intracellular relay for regulatory signals of the cellular environment. STMN1 is involved in the regulation of the microtubule filament system by destabilizing microtubules. In addition, STMN1 has recently been implicated as a potential target of the ASK1-p38 MAP kinase cascade. Phosphorylation at STMN1 Ser-16 may be required for axon formation during neurogenesis. The STMN1 gene has been linked to the control of the learned and innate fear responses. STMN1 is highly expressed in a wide variety of human malignancies, including leukemia, prostate cancer, ovarian carcinoma, and breast carcinoma; suggesting that STMN1 may be an ideal target for anti-cancer therapeutics.

**Synonyms:**

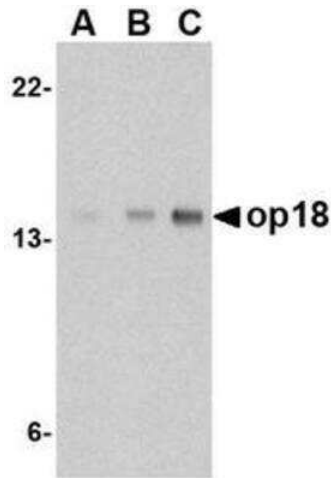
C1orf215; Lag; LAP18; OP18; PP17; PP19; PR22; SMN

**Protein Pathways:**

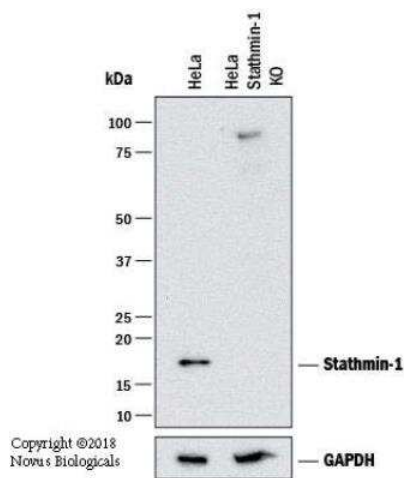
MAPK signaling pathway

**Product images:**

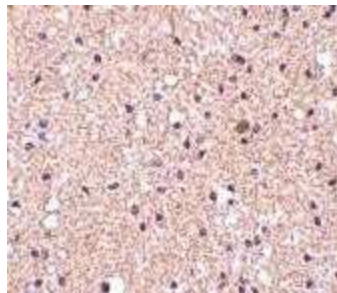
Immunocytochemistry/Immunofluorescence:  
Stathmin 1 Antibody TA336822 - Stathmin 1 antibody was tested in PC12 cells with DyLight 488 (green). Nuclei and alpha-tubulin were counterstained with DAPI (blue) and Dylight 550 (red).



Western Blot: Stathmin 1 Antibody TA336822 - EL4 cell lysate with op18 antibody at (A) 0.5, (B) 1 and (C) 2 ug/mL.



Knockout Validated: Stathmin 1 Antibody TA336822 - Western blot shows lysates of HeLa human cervical epithelial carcinoma parental cell line and Stathmin 1 knockout (KO) HeLa cell line. PVDF membrane was probed with 1 ug/ml of Rabbit Anti-Human SIRT1 Polyclonal Antibody (Catalog # TA336822) followed by HRP-conjugated Anti-Rabbit IgG Secondary Antibody (Catalog #HAF008). Specific band was detected for Stathmin 1 at approximately 17 kDa (as indicated) in the parental HeLa cell line, but is not detectable in the knockout HeLa cell line. This experiment was conducted under reducing conditions.



Immunohistochemistry-Paraffin: Stathmin 1 Antibody TA336822 - Human brain tissue with op18 antibody at 2.5 ug/ml.