

## Product datasheet for **TA336820**

### ATF6 Rabbit Polyclonal Antibody

#### Product data:

Product Type:	Primary Antibodies
Applications:	ICC/IF, Simple Western, WB
Recommended Dilution:	Simple Western: 1:25, Immunocytochemistry/ Immunofluorescence: 1:100, Western Blot: 1:100-1:2000
Reactivity:	Human
Host:	Rabbit
Clonality:	Polyclonal
Immunogen:	A genomic peptide made to an internal region of the human ATF6 protein (within residues 200-350). [Swiss-Prot P18850]
Formulation:	PBS, 0.05% Sodium Azide. Store at 4C short term. Aliquot and store at -20C long term. Avoid freeze-thaw cycles.
Concentration:	lot specific
Purification:	Immunogen affinity purified
Conjugation:	Unconjugated
Storage:	Store at -20°C as received.
Stability:	Stable for 12 months from date of receipt.
Gene Name:	activating transcription factor 6
Database Link:	<a href="#">NP_031374</a> <a href="#">Entrez Gene 22926 Human P18850</a>
Background:	Endoplasmic reticulum stress results in protein folding irregularities and proteolytic aberrations. ER stress is mediated in part by the activating transcription factor (ATF6). ATF6 is a signal transducer that prohibits phosphorylation of certain proteins, like the insulin receptor, and protects overactive responses to ER stress. This ultimately mediates apoptosis through mitochondrial cellular signaling. Influenza infections are known to affect ER stress in lung endothelial cells, partially mediated by ATF6 activity. This protein is also being investigated for potential optimization of recovery efforts, following traumatic injury, especially in spinal cord and brain.



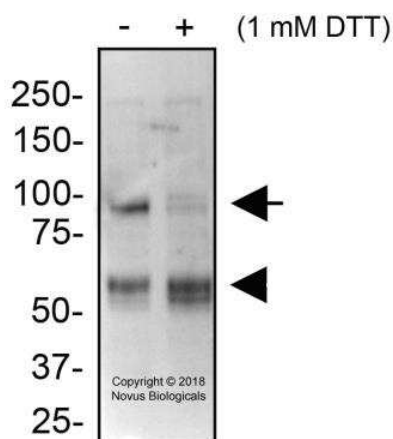
[View online »](#)

**Synonyms:** ACHM7; ATF6A  
**Note:** This ATF6 antibody is useful for Immunocytochemistry/Immunofluorescence.  
**Protein Families:** Transcription Factors  
**Protein Pathways:** Alzheimer's disease

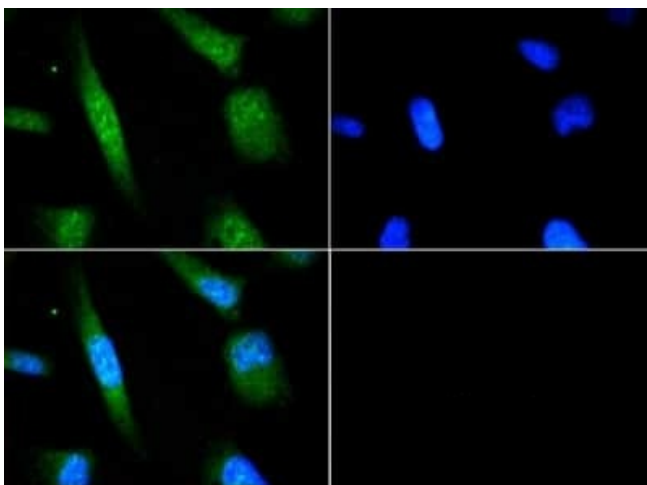
**Product images:**



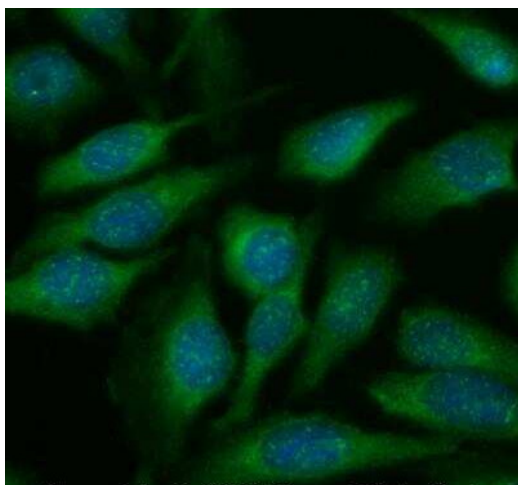
Simple Western: ATF6 Antibody TA336820 - Simple Western lane view shows a specific band for ATF6 in 1.0 mg/ml of HeLa lysate. This experiment was performed under reducing conditions using the 12-230kDa separation system.



Western Blot: ATF6 Antibody TA336820 - Total protein from HeLa cells treated with and without 1 mM DTT for 24 hours was separated on a 7.5% gel by SDS-PAGE, transferred to PVDF membrane and blocked in 1% BSA. The membrane was probed with 2.0 ug/ml anti-ATF6 in block buffer and detected with an anti-rabbit HRP secondary antibody using chemiluminescence. Note the decrease in full length ATF6 (90 kDa, arrow) and increase in cleaved ATF6 (55 kDa, arrowhead) upon DTT treatment and the activation of the unfolded protein response pathway.



Immunocytochemistry/Immunofluorescence:  
ATF6 Antibody TA336820 - Antibody was tested in HeLa cells with FITC (green). Nuclei were counterstained with Dapi (blue).



Immunocytochemistry/Immunofluorescence:  
ATF6 Antibody TA336820 - HeLa cells were fixed and permeabilized for 10 minutes using -20C MeOH. The cells were incubated with anti-ATF6 at 10 ug/ml overnight at 4C and detected with an anti-rabbit Dylight 488 (Green) at a 1:500 dilution. Nuclei were counterstained with DAPI (Blue). Cells were imaged using a 40X objective.