

Product datasheet for **TA336812**

SPIB Rabbit Polyclonal Antibody

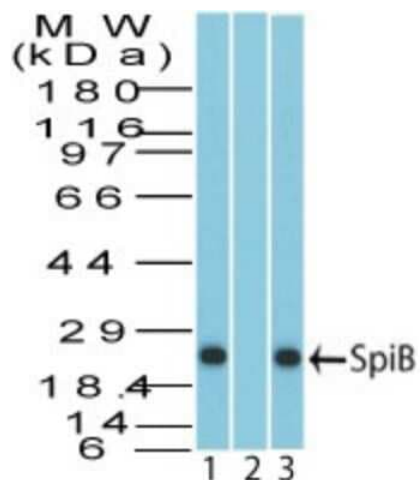
Product data:

Product Type:	Primary Antibodies
Applications:	WB
Recommended Dilution:	Western Blot: 3-5 ug/ml
Reactivity:	Human, Mouse, Bovine, Canine, Equine, Primate
Host:	Rabbit
Clonality:	Polyclonal
Immunogen:	A portion of amino acid 15-65 of human Spi-B was used as the immunogen.
Formulation:	PBS containing 0.05% BSA, 0.05% Sodium Azide. Store at 4C short term. Aliquot and store at -20C long term. Avoid freeze-thaw cycles.
Concentration:	lot specific
Purification:	Protein A purified
Conjugation:	Unconjugated
Storage:	Store at -20°C as received.
Stability:	Stable for 12 months from date of receipt.
Gene Name:	Spi-B transcription factor
Database Link:	NP_003112 Entrez Gene 272382 Mouse Entrez Gene 6689 Human Q01892
Background:	Transcription factor Spi-B belongs to the ETS family and contains one ETS DNA-binding domain. Spi-B inhibits human plasma cell differentiation by repressing BLIMP1 and XBP-1 expression, thus maintains activity of germinal center and memory B cells by direct repression of major plasma cell factors and thereby plasma cell differentiation. It is reported that Spi-B regulates Progressive multifocal leukoencephalopathy (PML) causing JCVirus gene expression, and may play an important role in JCV activity in the immune and nervous systems. It is also reported Spi-B is expressed in various murine and hematopoietic lines except T lymphoid lines.
Synonyms:	SPI-B
Protein Families:	Transcription Factors



[View online »](#)

Product images:



Western Blot: SPIB Antibody TA336812 - Analysis of Spi-B in human Daudi lysate in the 1) absence and 2) presence of immunizing peptide and 3) on mouse RAW lysate using Spi-B polyclonal antibody at 4 ug/ml.