

Product datasheet for **TA336810**

EMA (MUC1) Rabbit Polyclonal Antibody

Product data:

Product Type:	Primary Antibodies
Applications:	FC, ICC/IF, IHC, WB
Recommended Dilution:	Knockout Validated, Western Blot: 0.2-1 ug/ml, Immunocytochemistry/ Immunofluorescence: 1:10-1:500, Immunohistochemistry: 1:10-1:500, Flow Cytometry, Immunohistochemistry-Paraffin: 4-8 ug/ml
Reactivity:	Human, Mouse, Rat, Bovine, Equine, Guinea Pig, Porcine
Host:	Rabbit
Clonality:	Polyclonal
Immunogen:	Synthetic peptides corresponding to MUC1(mucin 1, cell surface associated) The peptide sequence was selected from the C terminal region between aa 1200-1250 of human MUC1 (NP_001037855). Peptide sequence GQLDIFPARDTYHPMSEYPTYHTHGRYVPPSSTDRSPYEKVSAGNGGSSL.
Formulation:	PBS, 0.02% Sodium Azide. Store at -20C. Avoid freeze-thaw cycles.
Concentration:	lot specific
Purification:	Affinity purified
Conjugation:	Unconjugated
Storage:	Store at -20°C as received.
Stability:	Stable for 12 months from date of receipt.
Predicted Protein Size:	122 kDa. Disclaimer note: The observed molecular weight of the protein may vary from the listed predicted molecular weight due to post translational modifications, post translation cleavages, relative charges, and other experimental factors.
Gene Name:	mucin 1, cell surface associated
Database Link:	NP_002447 Entrez Gene 17829 Mouse Entrez Gene 24571 Rat Entrez Gene 4582 Human P15941



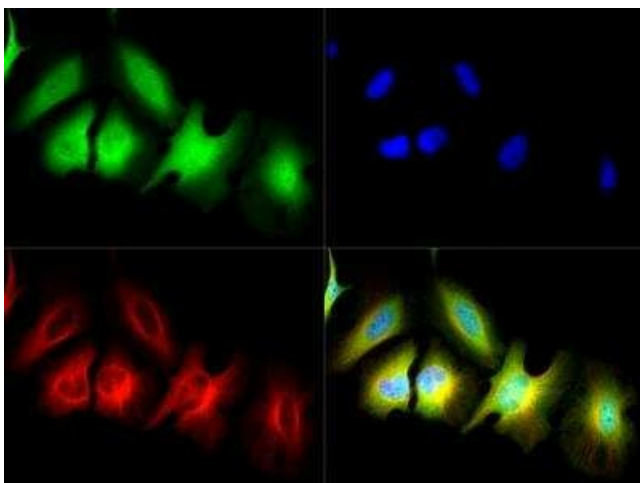
[View online »](#)

Background: MUC1 is a membrane bound, glycosylated phosphoprotein. The protein is anchored to the apical surface of many epithelia by a transmembrane domain, with the degree of glycosylation varying with cell type. It also includes a 20 aa variable number tandem repeat (VNTR) domain, with the number of repeats varying from 20 to 120 in different individuals. The protein serves a protective function by binding to pathogens and also functions in a cell signaling capacity. Overexpression, aberrant intracellular localization, and changes in glycosylation of this protein have been associated with carcinomas.

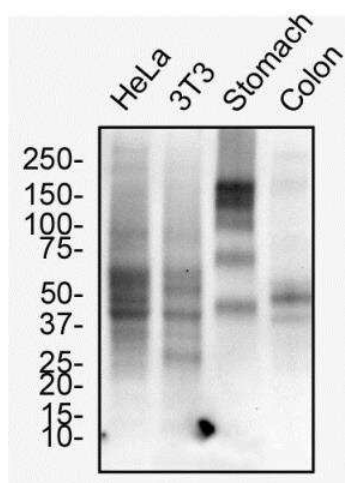
Synonyms: ADMCKD; ADMCKD1; CA 15-3; CD227; EMA; H23AG; KL-6; MAM6; MCD; MCKD; MCKD1; MUC-1; SEC

Protein Families: Druggable Genome, Secreted Protein, Transmembrane

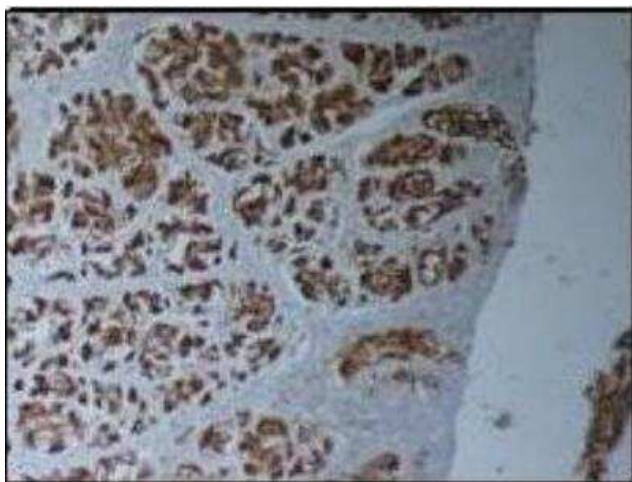
Product images:



Immunocytochemistry/Immunofluorescence: MUC1 Antibody TA336810 - Tested in HeLa cells at a 1:50 dilution against DyLight 488 (Green). Cells were counterstained for alpha-tubulin against DyLight 550 (Red) and mounted in DAPI fluoromount (Blue).



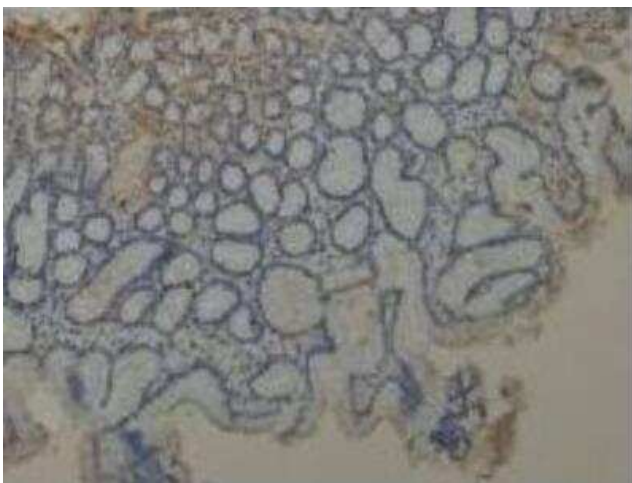
Western Blot: MUC-1 Antibody TA336810 - Total protein from mouse 3T3 cells and human HeLa cells, stomach and colon was separated on a 4-15% gel by SDS-PAGE, transferred to PVDF membrane and blocked in 5% non-fat milk in TBST. The membrane was probed with 2.0 ug/ml anti-MUC-1 in 1% non-fat milk in TBST and detected with an anti-rabbit HRP secondary antibody using chemiluminescence.



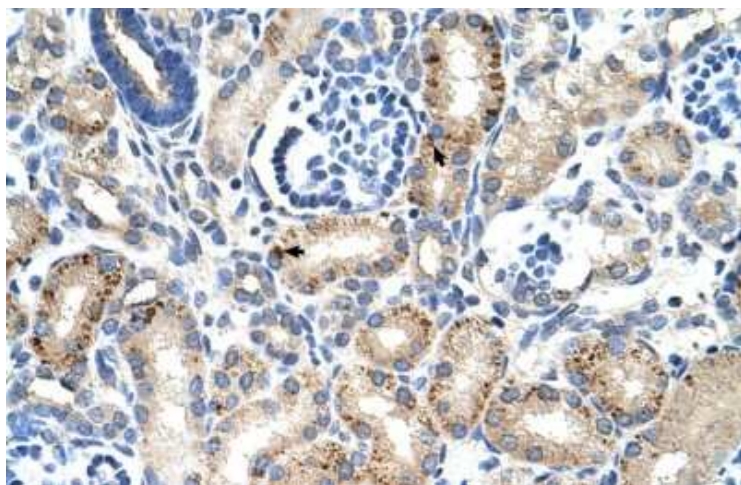
Immunohistochemistry-Paraffin: MUC1 Antibody TA336810 - Pig stomach.



Immunohistochemistry-Paraffin: MUC1 Antibody TA336810 - Pig stomach.



Immunohistochemistry-Paraffin: MUC1 Antibody TA336810 - Human stomach.



Immunohistochemistry-Paraffin: MUC1 Antibody TA336810 - Human kidney lysate tissue at an antibody concentration of 4-8ug/ml.