

## Product datasheet for **TA336808**

### SDHB Rabbit Polyclonal Antibody

#### Product data:

Product Type:	Primary Antibodies
Applications:	ICC/IF, IHC, WB
Recommended Dilution:	Immunohistochemistry: 1:50-1:100, Immunocytochemistry/ Immunofluorescence: 1:50-1:100, Western Blot: 1:7000, Immunohistochemistry-Paraffin: 1:50-1:100
Reactivity:	Human, Mouse
Host:	Rabbit
Clonality:	Polyclonal
Immunogen:	A genomic peptide made to an N-terminal region of the human SDHB protein (within residues 1-150). [Swiss-Prot P21912]
Formulation:	PBS, 0.05% Sodium Azide. Store at 4C short term. Aliquot and store at -20C long term. Avoid freeze-thaw cycles.
Concentration:	lot specific
Purification:	Immunogen affinity purified
Conjugation:	Unconjugated
Storage:	Store at -20°C as received.
Stability:	Stable for 12 months from date of receipt.
Gene Name:	succinate dehydrogenase complex iron sulfur subunit B
Database Link:	<a href="#">NP_002991</a> <a href="#">Entrez Gene 67680 Mouse</a> <a href="#">Entrez Gene 6390 Human</a> <a href="#">P21912</a>



[View online »](#)

**Background:** SDHB [Succinate dehydrogenase (ubiquinone) iron-sulfur subunit, mitochondrial] is an iron-sulfur protein subunit of succinate dehydrogenase (SDH) which is involved in mitochondrial electron transport chain's complex II and is accountable for electrons transfer from succinate to ubiquinone/coenzyme Q. The complex II is a key respiratory enzyme which links Krebs cycle and electron transport chain, and is composed of four subunits: the flavoprotein SDHA, iron-sulfur protein SDHB, and a cytochrome b560 composed of SDHC and SDHD as well as additional groups such as iron-sulphur centres and ubiquinone. SDH complex functions as a tumour suppressor, and loss of any of the subunit proteins leads to destabilization of the complex that follows carcinogenesis. Defects in SDHB have also been linked to susceptibility to pheochromocytoma (PCC), paragangliomas type 4 (PGL4), paraganglioma and gastric stromal sarcoma (PGSS), and Cowden-like syndrome (CWDLS).

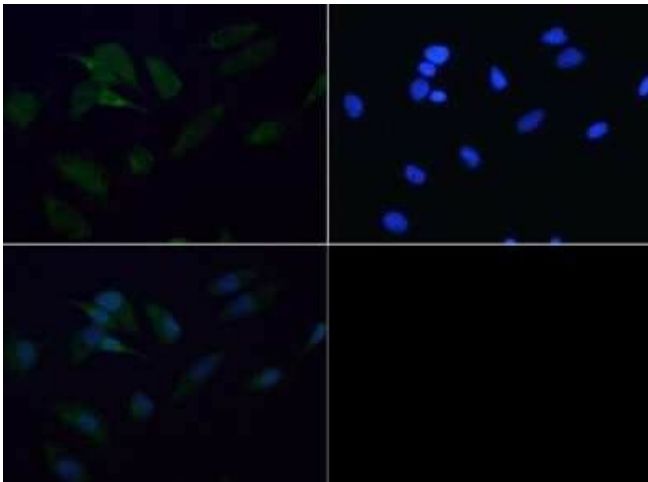
**Synonyms:** CWS2; IP; PGL4; SDH; SDH1; SDH2; SDHIP

**Note:** This SDHB antibody is useful for ICC/IF, IHC and Western blot where a band is seen ~31 kDa. Prior to immunostaining paraffin tissues, antigen retrieval with sodium citrate buffer (pH 6.0) is recommended.

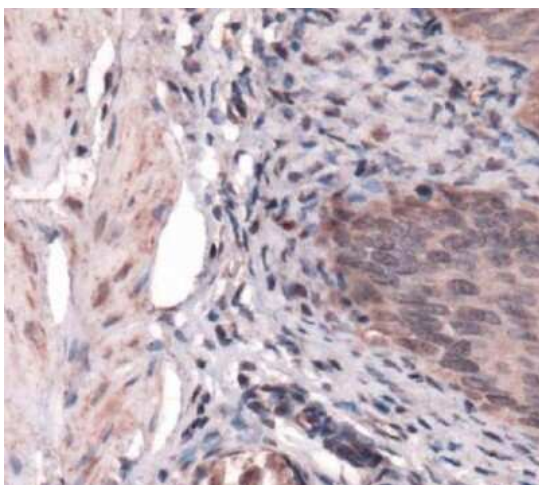
**Protein Families:** Druggable Genome

**Protein Pathways:** Alzheimer's disease, Citrate cycle (TCA cycle), Huntington's disease, Metabolic pathways, Oxidative phosphorylation, Parkinson's disease

### Product images:



Immunocytochemistry/Immunofluorescence:  
SDHB Antibody TA336808 - ICC staining of SDHB  
in HeLa cells with FITC (green). Nuclei were  
counterstained with Dapi (blue).



Immunohistochemistry: SDHB Antibody TA336808 - IHC staining of SDHB in mouse bladder.



Western Blot: SDHB Antibody TA336808 - Detection of SDHB in mouse kidney lysate.