

## Product datasheet for **TA336803**

### Oct4 (POU5F1) Mouse Monoclonal Antibody [Clone ID: 7E7]

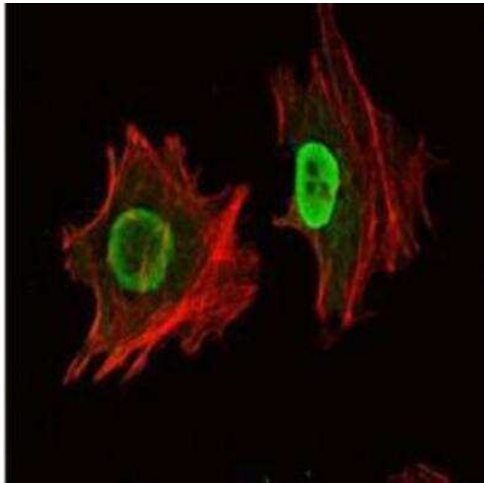
#### Product data:

Product Type:	Primary Antibodies
Clone Name:	7E7
Applications:	ELISA, FC, ICC/IF, WB
Recommended Dilution:	Flow Cytometry: 1:200-1:400, ELISA: 1:10000, Immunocytochemistry/ Immunofluorescence: 1:200-1:1000, Western Blot: 1:500-1:2000
Reactivity:	Human
Host:	Mouse
Isotype:	IgG1
Clonality:	Monoclonal
Immunogen:	Synthetic peptide derived from an internal portion of human OCT4. [UniProt# Q01860]
Formulation:	Preservative: 0.05% Sodium Azide. Aliquot and store at -20C or -80C. Avoid freeze-thaw cycles.
Concentration:	lot specific
Purification:	Ascites
Conjugation:	Unconjugated
Storage:	Store at -20°C as received.
Stability:	Stable for 12 months from date of receipt.
Predicted Protein Size:	45 kDa
Gene Name:	POU class 5 homeobox 1
Database Link:	<a href="#">NP_002692</a> <a href="#">Entrez Gene 5460 Human</a> <a href="#">Q01860</a>

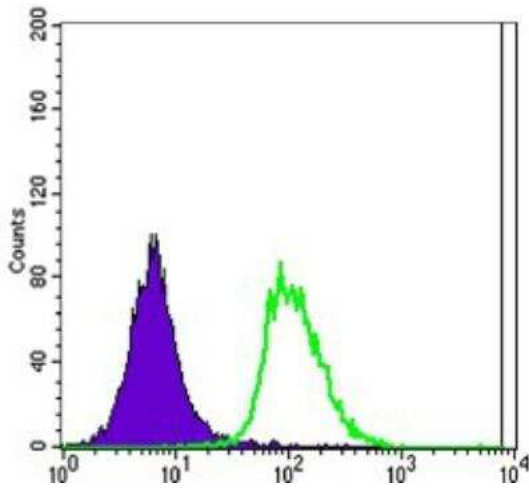


[View online »](#)

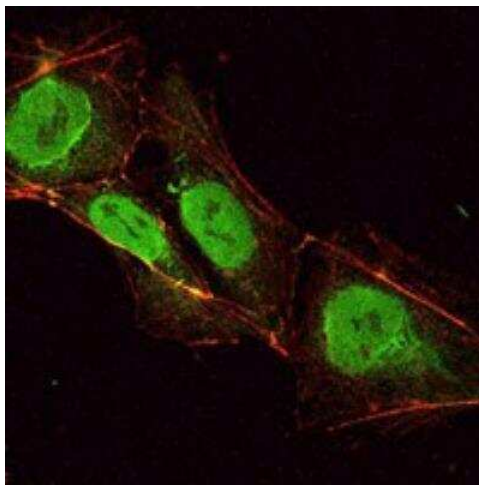
- Background:** The OCT4 gene encodes a transcription factor containing a POU homeodomain. This transcription factor plays a role in embryonic development, especially during early embryogenesis, and it is necessary for embryonic stem cell pluripotency. A translocation of this gene with the Ewing's sarcoma gene, t(6;22)(p21;q12), has been linked to tumor formation. Alternative splicing, as well as usage of alternative translation initiation codons, results in multiple isoforms, one of which initiates at a non-AUG (CUG) start codon. Related pseudogenes have been identified on chromosomes 1, 3, 8, 10, and 12. (provided by RefSeq). Tissue specificity: Expressed in developing brain. Highest levels found in specific cell layers of the cortex, the olfactory bulb, the hippocampus and the cerebellum. Low levels of expression in adult tissues.
- Synonyms:** Oct-3; Oct-4; OCT3; OCT4; OTF-3; OTF3; OTF4
- Note:** This OCT4 (7E7) antibody is useful for Western Blot, ELISA, Flow Cytometry and Immunocytochemistry/Immunofluorescence.
- Protein Families:** Adult stem cells, Cancer stem cells, Embryonic stem cells, Induced pluripotent stem cells, Stem cell - Pluripotency, Transcription Factors

**Product images:**

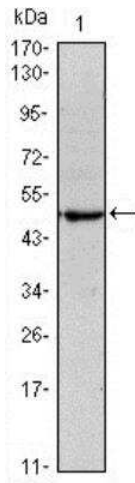
Immunocytochemistry/Immunofluorescence:  
OCT4 Antibody (7E7) TA336803 - Analysis of  
NTERA-2 cells using OCT4 mouse mAb (green).  
Actin filaments have been labeled with Alexa  
Fluor-555 phalloidin (red).



Flow Cytometry: OCT4 Antibody (7E7) TA336803 - Flow cytometric analysis of Jurket cells using OCT4 mouse mAb (green) and negative control (purple).



Immunocytochemistry/Immunofluorescence: OCT4 Antibody (7E7) TA336803 - Analysis of NTERA-2 cells using OCT4 mouse mAb (green). Actin filaments have been labeled with Alexa Fluor-555 phalloidin (red).



Western Blot: OCT4 Antibody (7E7) TA336803 - Analysis using OCT4 mouse mAb against NTERA-2 cell lysate.