

Product datasheet for **TA336802**

RICTOR Mouse Monoclonal Antibody [Clone ID: 7B3]

Product data:

Product Type:	Primary Antibodies
Clone Name:	7B3
Applications:	ELISA, FC, ICC/IF, IHC, WB
Recommended Dilution:	Flow Cytometry: 1 ug per million cells, ELISA: 1:10000, Immunohistochemistry: 1:200-1:1000, Immunocytochemistry/ Immunofluorescence: 1:200-1:1000, Western Blot: 1:500-1:2000, Immunohistochemistry-Paraffin: 1:200-1:1000
Reactivity:	Human, Mouse, Primate
Host:	Mouse
Isotype:	IgG1
Clonality:	Monoclonal
Immunogen:	Purified recombinant fragment of human RICTOR expressed in E. coli. [UniProt# Q6R327]
Formulation:	PBS, 0.03% Sodium Azide. Store at 4C short term. Aliquot and store at -20C long term. Avoid freeze-thaw cycles.
Concentration:	lot specific
Purification:	Ammonium sulfate precipitation
Conjugation:	Unconjugated
Storage:	Store at -20°C as received.
Stability:	Stable for 12 months from date of receipt.
Predicted Protein Size:	192 kDa
Gene Name:	RPTOR independent companion of MTOR complex 2
Database Link:	NP_001272368 Entrez Gene 78757 Mouse Entrez Gene 253260 Human Q6R327
Synonyms:	AVO3; hAVO3; PIA

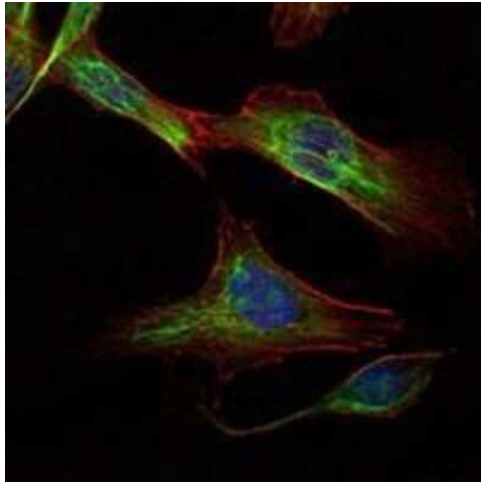


[View online »](#)

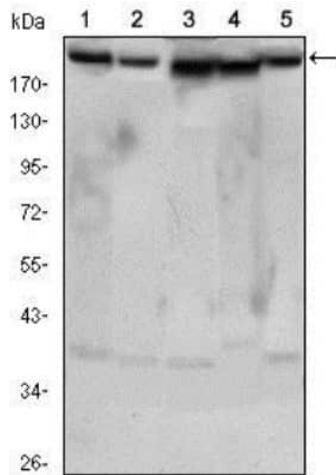
Note: This RICTOR (7B3) antibody is useful for Western blot, Flow Cytometry, Immunocytochemistry/Immunofluorescence, Immunohistochemistry on paraffin-embedded sections and ELISA. Use in Immunoprecipitation reported in scientific literature (PMID: 22952709)

Protein Pathways: mTOR signaling pathway

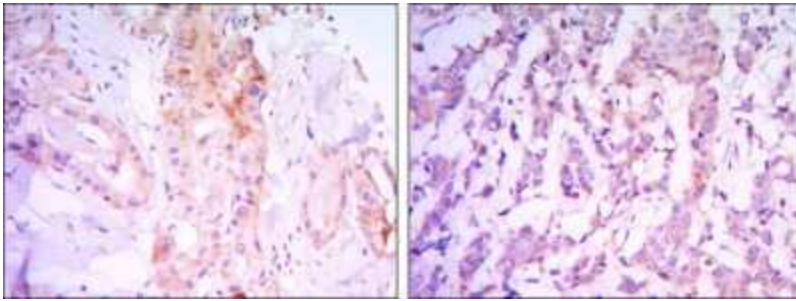
Product images:



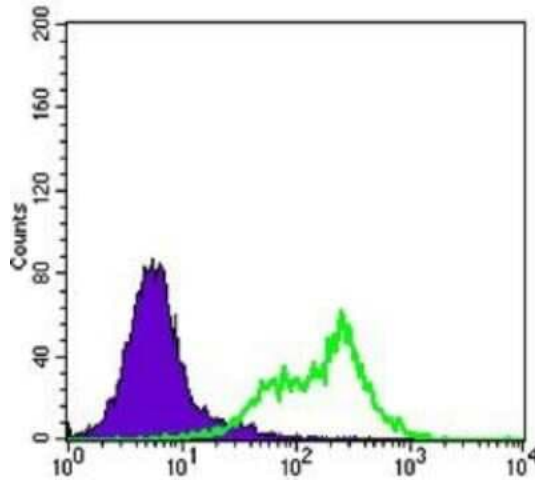
Immunocytochemistry/Immunofluorescence: Rictor Antibody (7B3) TA336802 - Analysis of NIH/3T3 cells using RICTOR mouse mAb (green). Blue: DRAQ5 fluorescent DNA dye. Red: Actin filaments have been labeled with Alexa Fluor-555 phalloidin.



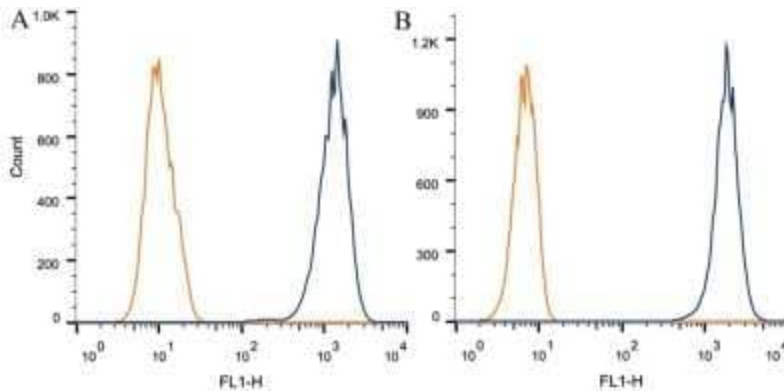
Western Blot: Rictor Antibody (7B3) TA336802 - Western blot analysis using RICTOR mouse mAb against HeLa (1), PANC-1 (2), MOLT4 (3), HepG2 (4) and HEK293 (5) cell lysates.



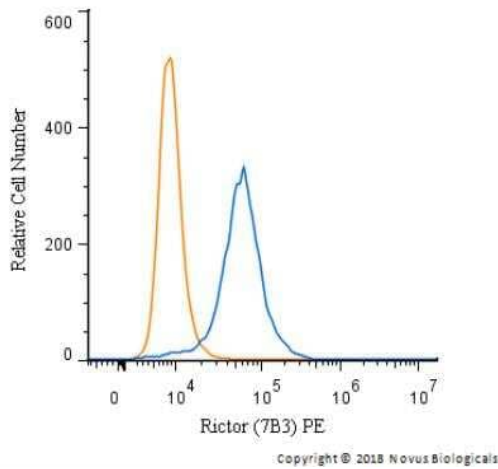
Immunohistochemistry-Paraffin: Rictor Antibody (7B3) TA336802 - Immunohistochemical analysis of paraffin-embedded thyroid gland tissues (left) and human breast carcinoma (right) using RICTOR mouse mAb with DAB staining.



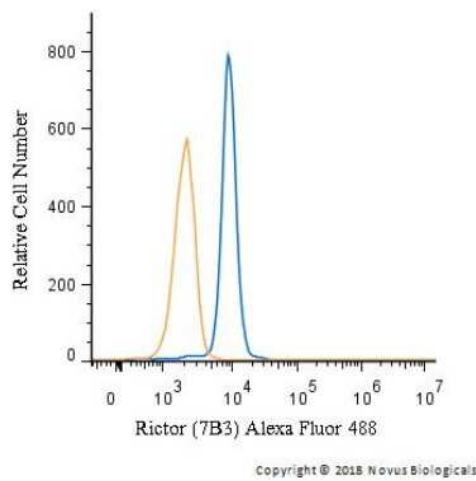
Flow Cytometry: Rictor Antibody (7B3) TA336802 - Flow cytometric analysis of HeLa cells using RICTOR mouse mAb (green) and negative control (purple).



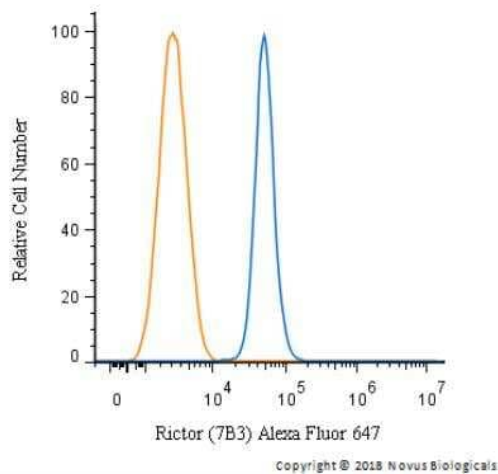
Flow Cytometry: Rictor Antibody (7B3) TA336802 - Intracellular flow cytometric staining of 1×10^6 CHO (A) and HEK-293 (B) cells using RICTOR antibody (dark blue). Isotype control shown in orange. An antibody concentration of $1 \mu\text{g}/1 \times 10^6$ cells was used.



Flow Cytometry: Rictor Antibody (7B3) TA336802 - An intracellular stain was performed on HeLa cells with Rictor Antibody (7B3) TA336802PE (blue) and a matched isotype control (orange). Cells were fixed with 4% PFA and then permeabilized with 0.1% saponin. Cells were incubated in an antibody dilution of 2.5 ug/mL for 30 minutes at room temperature. Both antibodies were conjugated to Phycoerythrin.



Flow Cytometry: Rictor Antibody (7B3) TA336802 - An intracellular stain was performed on Jurkat cells with Rictor Antibody (7B3) TA336802AF488 (blue) and a matched isotype control (orange). Cells were fixed with 4% PFA and then permeabilized with 0.1% saponin. Cells were incubated in an antibody dilution of 5 ug/mL for 30 minutes at room temperature. Both antibodies were conjugated to Alexa Fluor 488.



Flow Cytometry: Rictor Antibody (7B3) TA336802 - An intracellular stain was performed on HeLa cells with Rictor Antibody (7B3) TA336802AF647 (blue) and a matched isotype control (orange). Cells were fixed with 4% PFA and then permeabilized with 0.1% saponin. Cells were incubated in an antibody dilution of 2.5 ug/mL for 30 minutes at room temperature. Both antibodies were conjugated to Alexa Fluor 647.