

Product datasheet for **TA336798**

Prostate Specific Antigen (KLK3) Mouse Monoclonal Antibody [Clone ID: 5A11E9]

Product data:

Product Type:	Primary Antibodies
Clone Name:	5A11E9
Applications:	ELISA, FC, IHC, WB
Recommended Dilution:	Western Blot: 1:500-1:2000, Immunohistochemistry-Paraffin: 1:200-1:1000, Flow Cytometry: 1:200-1:400, ELISA: 1:10000, Immunohistochemistry: 1:10-1:500
Reactivity:	Human
Host:	Mouse
Isotype:	IgG1
Clonality:	Monoclonal
Immunogen:	Purified recombinant fragment of Prostate Specific Antigen (amino acids 26-251) expressed in E. coli. [UniProt# P07288]
Formulation:	Preservative: 0.05% Sodium Azide. Aliquot and store at -20C or -80C. Avoid freeze-thaw cycles.
Concentration:	lot specific
Purification:	Ascites
Conjugation:	Unconjugated
Storage:	Store at -20°C as received.
Stability:	Stable for 12 months from date of receipt.
Gene Name:	kallikrein related peptidase 3
Database Link:	NP_001639 Entrez Gene 354 Human P07288



[View online »](#)

Background:

Prostate Specific Antigen (PSA, Kallikrein-3, KLK3) is a serine protease that is usually secreted from the prostate gland and presented in seminal plasma. Prostate Specific Antigen functions in the liquefaction of seminal coagulum, through hydrolysis of the high molecular mass seminal vesicle protein. Its substrates includes semenogelin I & II, fibronectin, insulin-like growth factor binding protein 3 (IGBP3), and laminin. Highly expressed by normal and malignant prostate cancer cells, Prostate Specific Antigen has been implicated in the growth, invasion, and metastasis of prostate cancer cells. Therefore, Prostate Specific Antigen is widely used as a diagnostic marker for prostate cancer.

Synonyms:

APS; hK3; KLK2A1; PSA

Note:

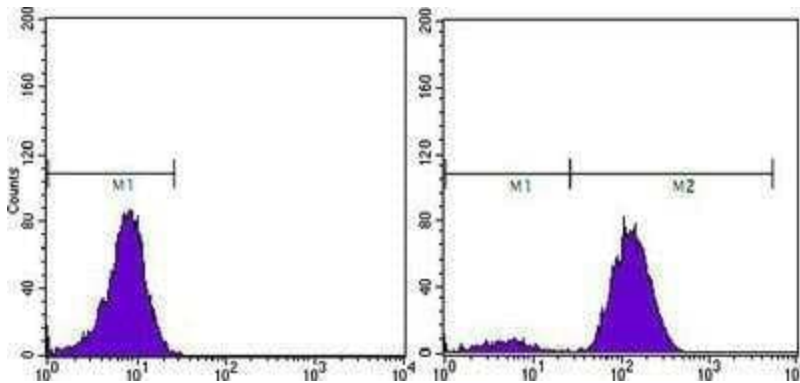
This Prostate Specific Antigen (5A11E9) antibody is useful for Western blot, Flow Cytometry, Immunohistochemistry on paraffin-embedded sections and ELISA.

Protein Families:

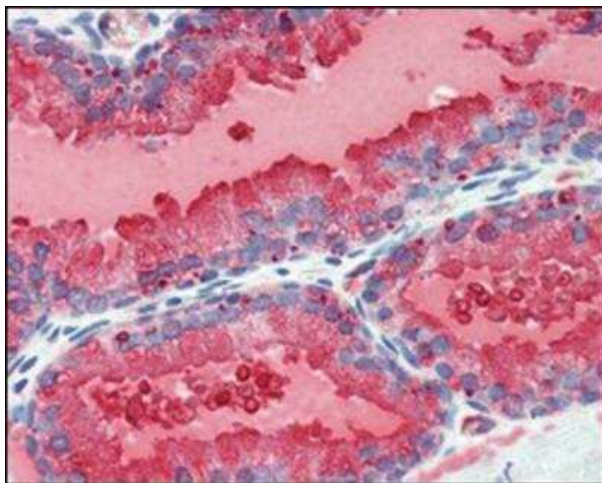
Druggable Genome, Protease, Secreted Protein

Protein Pathways:

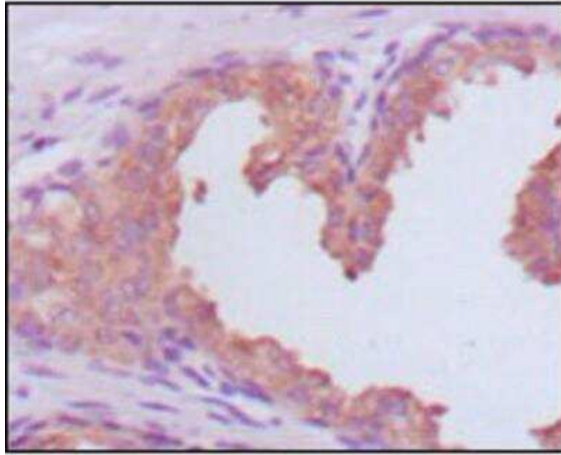
Pathways in cancer, Prostate cancer

Product images:

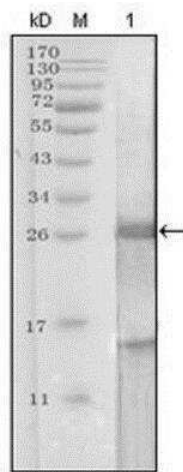
Flow Cytometry: Kallikrein 3/PSA Antibody (5A11E9) TA336798 - Flow cytometric analysis of PC-3 cells using Prostate Specific Antigen mouse mAb (right) and negative control (left).



Immunohistochemistry-Paraffin: Kallikrein 3/PSA Antibody (5A11E9) TA336798 - Analysis of paraffin-embedded human prostate tissues using Prostate Specific Antigen mouse mAb with DAB staining.



Immunohistochemistry-Paraffin: Kallikrein 3/PSA Antibody (5A11E9) TA336798 - Analysis of paraffin-embedded human prostate carcinoma tissues, showing cytoplasmic localization using Prostate Specific Antigen mouse mAb with DAB staining.



Western Blot: Kallikrein 3/PSA Antibody (5A11E9) TA336798 - Analysis against truncated Prostate Specific Antigen recombinant protein.