

Product datasheet for **TA336797**

GOLPH2 (GOLM1) Rabbit Polyclonal Antibody

Product data:

Product Type:	Primary Antibodies
Applications:	ICC/IF, WB
Recommended Dilution:	Immunocytochemistry/ Immunofluorescence: 1:500, Western Blot: 1:5000, Knockout Validated
Reactivity:	Human
Host:	Rabbit
Clonality:	Polyclonal
Immunogen:	A genomic peptide made to an internal region of the human GOLM1 protein (within residues 250-400). [Swiss-Prot Q8NBJ4]
Formulation:	PBS, 0.05% Sodium Azide. Store at 4C short term. Aliquot and store at -20C long term. Avoid freeze-thaw cycles.
Concentration:	lot specific
Purification:	Immunogen affinity purified
Conjugation:	Unconjugated
Storage:	Store at -20°C as received.
Stability:	Stable for 12 months from date of receipt.
Gene Name:	golgi membrane protein 1
Database Link:	NP_808800 Entrez Gene 51280 Human Q8NBJ4

Background: In liver, prostate and lung, both viral and non-viral related disease is correlated to the upregulation of GOLPH2, also known as GOLM1, GP73 or Golgi phosphoprotein 2. While it remains unclear how viral insertions are manifested into the Golgi apparatus and subsequent shepherding of proteins, GOLPH2 seems to be affected by the insertions in such a way that it can be attributed to disease phenotypes. Furthermore, because GOLPH2 is so uniquely regulated in cells, it can be successfully used as a clinically relevant molecular biomarker for cancer. As it is secreted and excreted, GOLPH2 is a useful biomarker because of relative ease of sampling in urine and direct correlation to urine concentrations and disease.



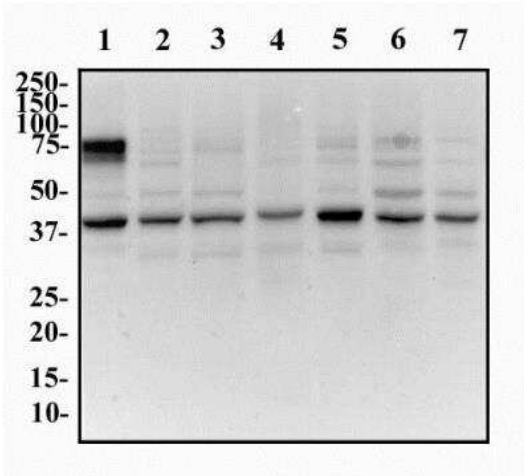
[View online »](#)

Synonyms: bA379P1.3; C9orf155; GOLPH2; GP73; HEL46; PSEC0257

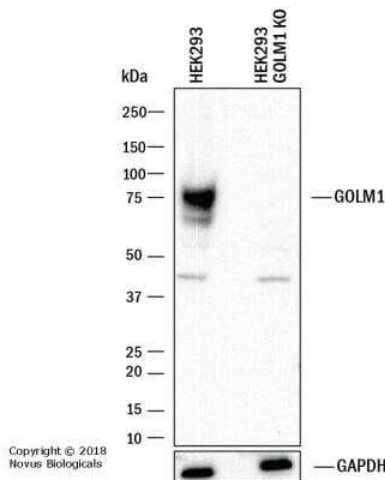
Note: This GOLPH2 antibody is useful for ICC/IF and Western blot.

Protein Families: Transmembrane

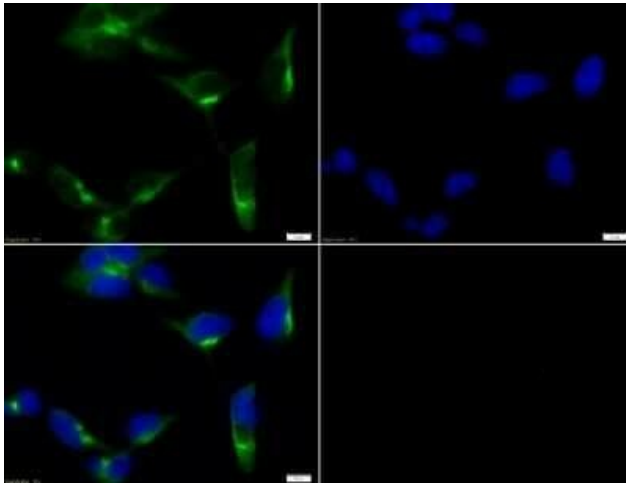
Product images:



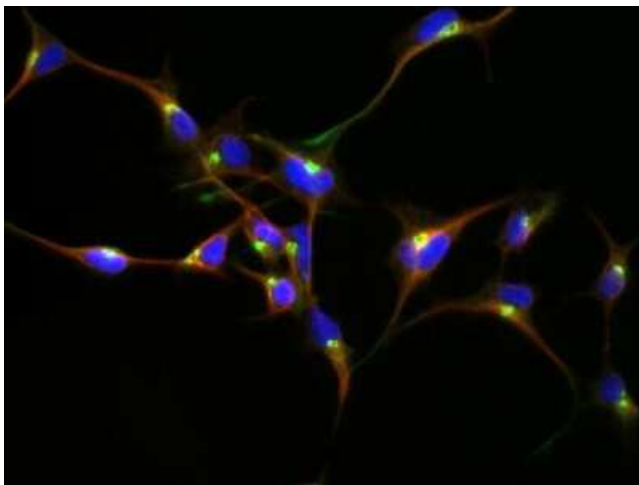
Western Blot: GOLM1 Antibody TA336797 - Western Blot Image of GOLM1. Whole cell protein from HeLa (lane 1), 3T3 (lane 2), MEF (lane 3), Raw264.7 (lane 4), L929 (lane 5), Neuro2A (lane 6) and PC12 (lane 7) were separated on a 12% gel by SDS-PAGE, transferred to PVDF membrane and blocked in 5% non-fat milk in TBST. The membrane was probed with 0.5 mg/ml anti-GOLM1 in 1% milk and detected with an anti-rabbit HRP secondary antibody using chemiluminescence.



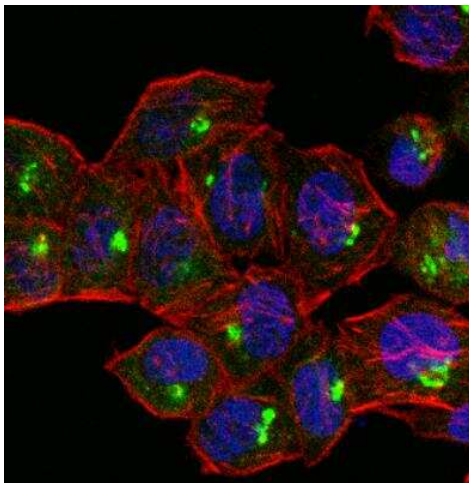
Knockout Validated: GOLM1 Antibody TA336797 - Western blot shows lysates of HEK293 human embryonic kidney parental cell line and GOLM1 knockout (KO) HEK293 human embryonic kidney cell line. PVDF membrane was probed with 1:5,000 of Rabbit Anti-Human GOLM1 polyclonal Antibody (Catalog # TA336797) followed by HRP-conjugated Anti-Rabbit IgG Secondary Antibody (Catalog #HAF008). Specific band was detected for GOLM1 at approximately 75 kDa (as indicated) in the parental HEK293 cell line, but is not detectable in the knockout HEK293 cell line. This experiment was conducted under reducing conditions.



Immunocytochemistry/Immunofluorescence:
GOLM1 Antibody TA336797 - ICC staining of
GOLM1 in HEK293T cells with FITC (green). Nuclei
(blue) were counterstained with Dapi.



Immunocytochemistry/Immunofluorescence:
GOLM1 Antibody TA336797 - GOLM1 antibody
was tested in HEK-293 cells with Dylight 488
(green). Nuclei and alpha-tubulin were
counterstained with DAPI (blue) and Dylight 550
(red).



Immunocytochemistry/Immunofluorescence:
GOLM1 Antibody TA336797 - Confocal
immunofluorescent analysis of HeLa cells using
GOLM1 antibody (TA336797, 1:25). An Alexa Fluor
488-conjugated Goat to rabbit IgG was used as
secondary antibody (green). Actin filaments were
labeled with Alexa Fluor 568 phalloidin (red).
DAPI was used to stain the cell nuclei (blue).