

Product datasheet for **TA336794**

KDM3A / JHDM2A (KDM3A) Rabbit Polyclonal Antibody

Product data:

Product Type:	Primary Antibodies
Applications:	ICC/IF, IHC, WB
Recommended Dilution:	Immunohistochemistry: 1:50, Immunocytochemistry/ Immunofluorescence: 1:500-1:2000, Western Blot: 1:5000, Immunohistochemistry-Paraffin: 1:50
Reactivity:	Human, Mouse, Primate
Host:	Rabbit
Clonality:	Polyclonal
Immunogen:	A genomic peptide made to an internal region of the human JMJD1A protein (within residues 250-400). [Swiss-Prot Q9Y4C1]
Formulation:	PBS, 0.05% Sodium Azide. Store at 4C short term. Aliquot and store at -20C long term. Avoid freeze-thaw cycles.
Concentration:	lot specific
Purification:	Immunogen affinity purified
Conjugation:	Unconjugated
Storage:	Store at -20°C as received.
Stability:	Stable for 12 months from date of receipt.
Gene Name:	lysine demethylase 3A
Database Link:	NP_001140160 Entrez Gene 104263 Mouse Entrez Gene 55818 Human Q9Y4C1



[View online »](#)

Background:

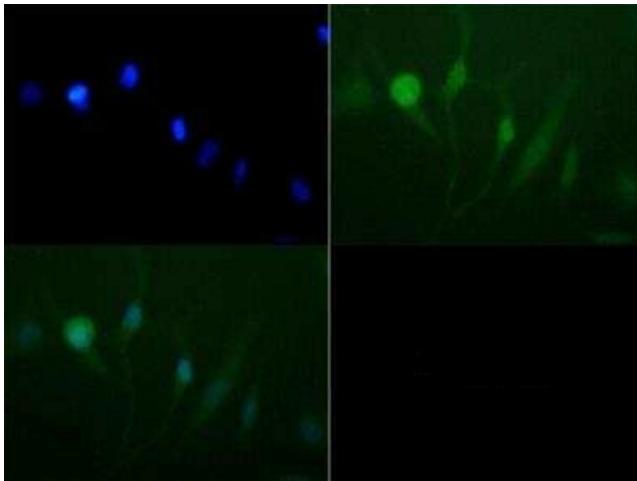
JMJD1A is a histone demethylase that specifically demethylates 'Lys-9' of histone H3, thereby playing a central role in histone code. It preferentially demethylates mono- and dimethylated H3 'Lys-9' residue, with a preference for dimethylated residue, while it has weak or no activity on trimethylated H3 'Lys-9'. Demethylation of Lys residue generates formaldehyde and succinate. JMJD1A is involved in hormone-dependent transcriptional activation, by participating in recruitment to androgen-receptor target genes, resulting in H3 'Lys-9' demethylation and transcriptional activation. It's also involved in spermatogenesis by regulating expression of target genes such as PRM1 and TMP1 which are required for packaging and condensation of sperm chromatin. Involved in obesity resistance through regulation of metabolic genes such as PPARA and UCP1.

Synonyms:

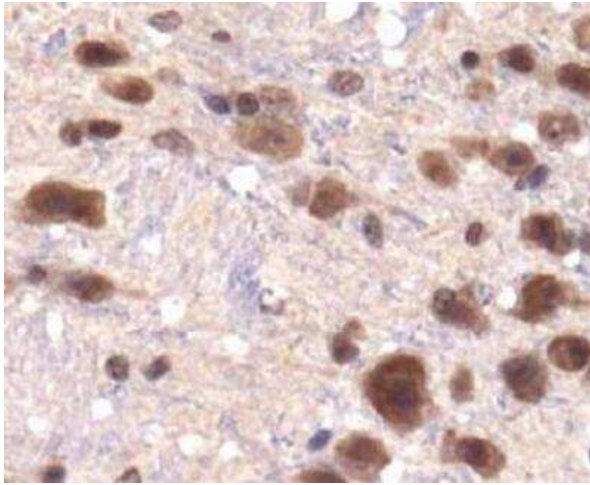
JHDM2A; JHMD2A; JMJD1; JMJD1A; TSGA

Note:

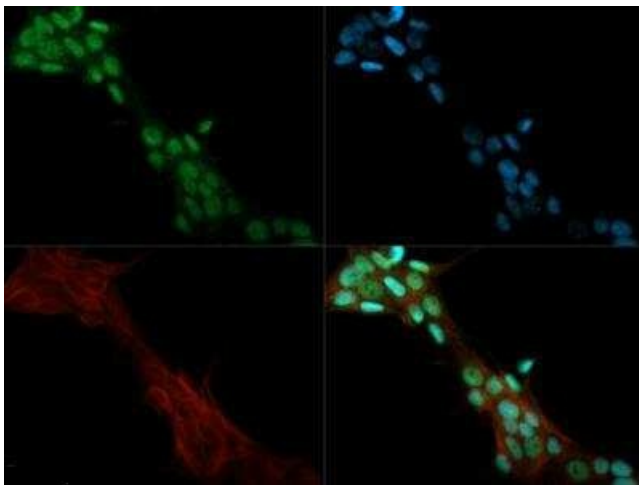
This JMJD1A antibody is useful for immunohistochemistry on paraffin tissues, immunocytochemistry/immunofluorescence and Western blot where a band is seen ~147 kDa. In ICC/IF, nuclear signal was observed in MCF-7 cells. Prior to immunostaining paraffin tissues, antigen retrieval with sodium citrate buffer (pH 6.0) is recommended.

Product images:

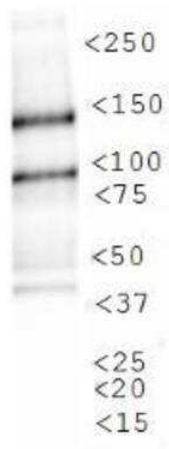
Immunocytochemistry/Immunofluorescence:
Lysine (K)-specific Demethylase
3A/KDM3A/JMJD1A Antibody TA336794 - Antibody
was tested at 1:50 in HeLa cells with FITC (green).
Nuclei (Blue) were counterstained with DAPI
(blue).



Immunohistochemistry-Paraffin: Lysine (K)-specific Demethylase 3A/KDM3A/JMJD1A Antibody TA336794 - Staining of JMJD1A in paraffin embedded mouse brain.



Immunocytochemistry/Immunofluorescence: Lysine (K)-specific Demethylase 3A/KDM3A/JMJD1A Antibody TA336794 - JMJD1A antibody was tested in MCF-7 cells with Dylight 488 (green). Nuclei and alpha-tubulin were counterstained with DAPI (blue) and Dylight 550 (red).



Western Blot: Lysine (K)-specific Demethylase 3A/KDM3A/JMJD1A Antibody TA336794 - Analysis of JMJD1A in Cos7 CoCl2 treated lysate.