

Product datasheet for **TA336791**

SLITRK1 Rabbit Polyclonal Antibody

Product data:

Product Type:	Primary Antibodies
Applications:	ICC/IF, IHC, WB
Recommended Dilution:	Immunohistochemistry: 1:250, Western Blot: 1:2500, Immunocytochemistry/ Immunofluorescence: 1:10-1:500
Reactivity:	Human, Mouse
Host:	Rabbit
Clonality:	Polyclonal
Immunogen:	A genomic peptide made to an internal region of the human Slitrk1 protein (within residues 250-400). [Swiss-Prot Q96PX8]
Formulation:	PBS, 0.05% Sodium Azide. Store at 4C short term. Aliquot and store at -20C long term. Avoid freeze-thaw cycles.
Concentration:	lot specific
Purification:	Immunogen affinity purified
Conjugation:	Unconjugated
Storage:	Store at -20°C as received.
Stability:	Stable for 12 months from date of receipt.
Gene Name:	SLIT and NTRK like family member 1
Database Link:	NP_001268432 Entrez Gene 76965 Mouse Entrez Gene 114798 Human Q96PX8



[View online »](#)

Background:

SLITRK1 (SLIT- and TRK-like family, member 1) is a type I transmembrane protein with an extracellular LRR (leucine-rich repeat) domain homologous to SLIT and a short intracellular domain lacking tyrosine phosphorylation motifs common among other SLITRK family members. SLITRK1 has been implicated in certain pathologies including Gilles de la Tourette syndrome (GTS) and trichotillomania (TTM). SLITRK1 has been shown to interact with 14-3-3 proteins, which are ubiquitously expressed phosphorylation-binding proteins implicated in regulation of multiple vital cellular processes such as proliferation, neuronal migration and membrane excitability. SLITRK1 has been shown to control neurite outgrowth and is expressed in embryonic as well as postembryonic brain with highest expression in cortex, thalamus and basal ganglia. SLITRK1 has also been reported to express in some astrocytic brain tumors such as astrocytomas, oligodendrogliomas, glioblastomas, gangliogliomas and primitive neuroectodermal tumors.

Synonyms:

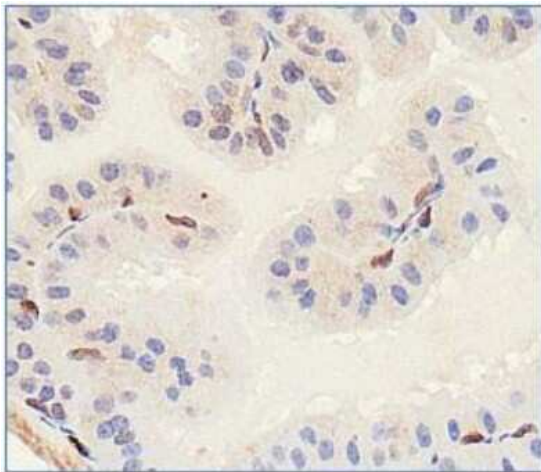
LRRC12; TTM

Note:

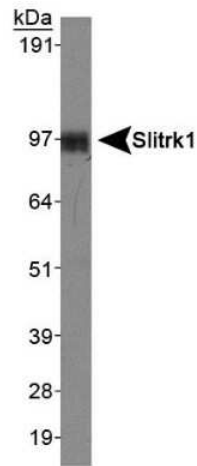
This Slitrk1 antibody is useful for IHC and Western blot. In Western blot a band is seen ~83 kDa.

Protein Families:

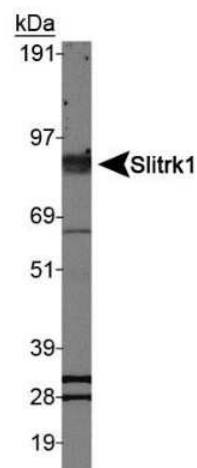
Transmembrane

Product images:

Immunohistochemistry: Slitrk1 Antibody
TA336791 - Analysis of Slitrk1 in mouse prostate



Western Blot: Slitrk1 Antibody TA336791 - Analysis of Slitrk1 in human brain lysate.



Western Blot: Slitrk1 Antibody TA336791 - Analysis of Slitrk1 in mouse brain lysate.