

Product datasheet for **TA336788**

Lin28 (LIN28A) Rabbit Polyclonal Antibody

Product data:

Product Type:	Primary Antibodies
Applications:	ICC/IF, IHC, WB
Recommended Dilution:	Immunohistochemistry: 1:1000, Immunocytochemistry/ Immunofluorescence: 10-15 ug/ml, Western Blot: 1:1000, Immunohistochemistry-Paraffin: 1:1000
Reactivity:	Human, Mouse
Host:	Rabbit
Clonality:	Polyclonal
Immunogen:	Partial recombinant human Lin28 protein expressed in E. coli. [Swiss-Prot# Q9H9Z2]
Formulation:	Aliquot and store at -20C or -80C. Avoid freeze-thaw cycles.
Concentration:	lot specific
Purification:	Whole antisera
Conjugation:	Unconjugated
Storage:	Store at -20°C as received.
Stability:	Stable for 12 months from date of receipt.
Gene Name:	lin-28 homolog A
Database Link:	NP_078950 Entrez Gene 83557 Mouse Entrez Gene 79727 Human Q9H9Z2
Background:	Lin28 acts as a 'translational enhancer', driving specific mRNAs to polysomes and thus increasing the efficiency of protein synthesis. Lin28 is a marker of undifferentiated human embryonic stem cells and has been used to enhance the efficiency of the formation of induced pluripotent stem (iPS) cells from human fibroblasts. Lin28 has also been shown to bind to the let-7 pre-miRNA and block production of the mature let-7 microRNA in mouse embryonic stem cells.
Synonyms:	CSDD1; LIN-28; lin-28A; LIN28; ZCCHC1
Note:	This Lin28 antibody is useful for IHC-P, ICC/IF and Western blot.
Protein Families:	Transcription Factors

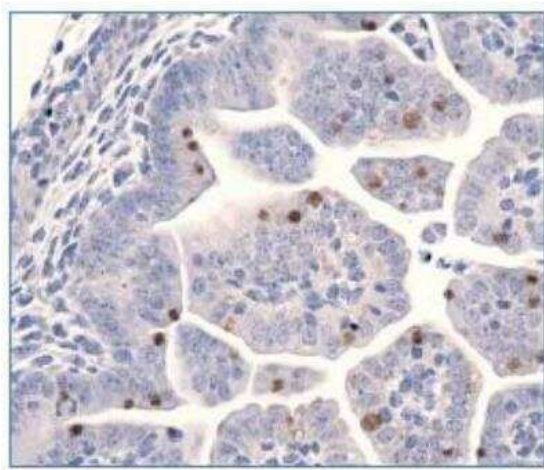


[View online »](#)

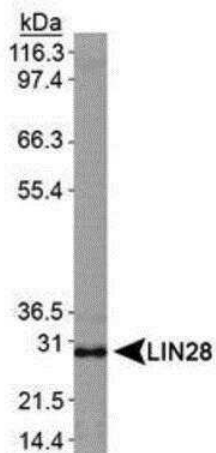
Product images:



Immunocytochemistry/Immunofluorescence: LIN-28A Antibody TA336788 - Analysis of LIN28 in NTERA-2 cells using TA336788. Nuclei (Blue) are counterstained using Hoechst 33258.



Immunohistochemistry: LIN-28A Antibody TA336788 - Analysis of LIN28 in E17.5 mouse embryo.



Western Blot: LIN-28A Antibody TA336788 - Analysis of LIN28 in NTERA-2 cell lysate.