

## Product datasheet for **TA336783**

### CCR2 Rabbit Polyclonal Antibody

#### Product data:

Product Type:	Primary Antibodies
Applications:	FC, ICC/IF, IHC
Recommended Dilution:	Immunocytochemistry/ Immunofluorescence: 1:50, Immunohistochemistry: 1:200, Flow Cytometry, Immunohistochemistry-Frozen
Reactivity:	Mouse
Host:	Rabbit
Isotype:	IgG
Clonality:	Polyclonal
Immunogen:	Synthetic peptide made to an N-terminal portion of the mouse CCR2 protein (within residues 20-100). [Swiss-Prot# P51683]
Formulation:	PBS, 30% glycerol, 0.1% Sodium Azide. Store at -20C. Avoid freeze-thaw cycles.
Concentration:	lot specific
Purification:	Immunogen affinity purified
Conjugation:	Unconjugated
Storage:	Store at -20°C as received.
Stability:	Stable for 12 months from date of receipt.
Database Link:	<a href="#">NP_000639</a> <a href="#">Entrez Gene 1231</a>



[View online »](#)

**Background:**

CCR2 is a major chemokine receptor expressed on monocytes and its activation through its ligands MCP1, MCP2, MCP3 and MCP4 (systematic names CCL2, CCL8, CCL7 and CCL13, respectively) stimulates the migration of monocytes across the vascular wall into tissues wherein they facilitate chronic inflammation. CCR2 is a member of GPCR1 family and is up-regulated by CREB3. It is a multi-pass membrane protein found in cell membrane, and besides monocytes, it is also found on other cell types like NK cells, macrophages, immature dendritic cells, gamma delta T cells, and activated T cells (including Th17 cells). There are two alternatively spliced forms of CCR2: CCR2A - the major isoform expressed by mononuclear cells and vascular smooth muscle cells; and CCR2B - expressed predominantly by monocytes and activated NK cells. CCR2 has both pro-inflammatory (mediated by APC and T cells) and anti-inflammatory (mediated by regulatory T cells) activities. Besides inflammation, it has been implicated several pathologies including HIV-1/AIDS, autoimmune disorders (psoriasis, rheumatoid arthritis, and multiple sclerosis), pulmonary diseases (asthma, COPD), vascular disease and cancer (prostate cancer).

**Synonyms:**

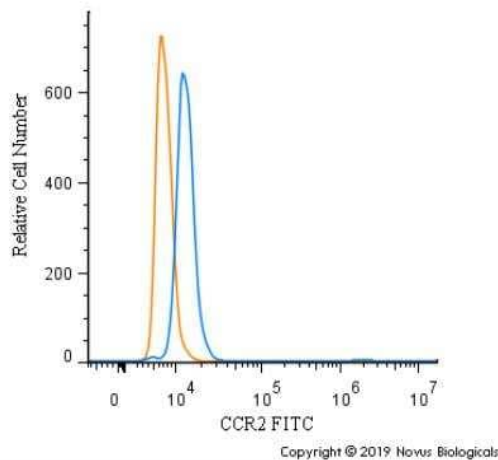
CC-CKR-2; CCR2A; CCR2B; CD192; CKR2; CKR2A; CKR2B; CMKBR2; MCP-1-R

**Note:**

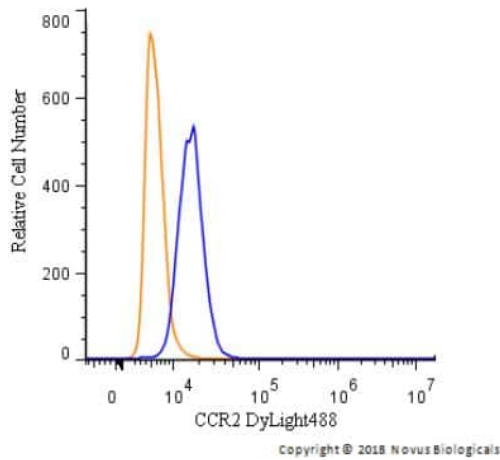
This CCR2 antibody is useful for Flow Cytometry and Immunocytochemistry/Immunofluorescence.

**Protein Families:**

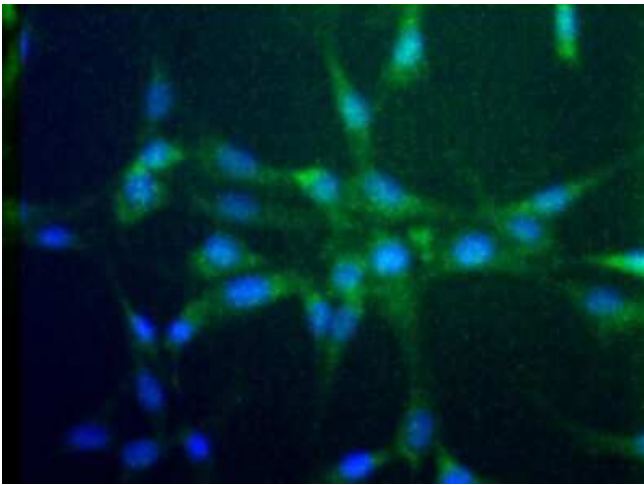
Druggable Genome, GPCR, Transmembrane

**Product images:**

Flow Cytometry: CCR2 Antibody TA336783 - An intracellular stain was performed on THP-1 cells with CCR2 Antibody TA336783F (blue) and a matched isotype control (orange). Cells were fixed with 4% PFA and then permeabilized with 0.1% saponin. Cells were incubated in an antibody dilution of 10 ug/mL for 30 minutes at room temperature. Both antibodies were conjugated to FITC.



Flow Cytometry: CCR2 Antibody TA336783 - An intracellular stain was performed on THP-1 cells with CCR2 Antibody [TA336783G] (blue) and a matched isotype control (orange). Cells were fixed with 4% PFA and then permeabilized with 0.1% saponin. Cells were incubated in an antibody dilution of 2.5 ug/mL for 30 minutes at room temperature. Both antibodies were conjugated to DyLight 488.



Immunocytochemistry/Immunofluorescence: CCR2 Antibody TA336783 - Analysis of CCR2 in NIH/3T3 cells.