

Product datasheet for **TA336774**

Synaptophysin (SYP) Mouse Monoclonal Antibody [Clone ID: 7H12]

Product data:

Product Type:	Primary Antibodies
Clone Name:	7H12
Applications:	ELISA, IHC, WB
Recommended Dilution:	ELISA: 1:10000, Immunohistochemistry, Western Blot: 1:500 - 1:2000, Immunohistochemistry-Paraffin: 1:200 - 1:1000
Reactivity:	Human, Rat
Host:	Mouse
Isotype:	IgG1
Clonality:	Monoclonal
Immunogen:	Purified recombinant fragment of human Synaptophysin expressed in E. coli. [UniProt# P08247]
Formulation:	Preservative: 0.05% Sodium Azide. Aliquot and store at -20C or -80C. Avoid freeze-thaw cycles.
Concentration:	lot specific
Purification:	Ascites
Conjugation:	Unconjugated
Storage:	Store at -20°C as received.
Stability:	Stable for 12 months from date of receipt.
Predicted Protein Size:	33.8 kDa
Gene Name:	synaptophysin
Database Link:	NP_003170 Entrez Gene 24804 Rat Entrez Gene 6855 Human P08247



[View online »](#)

Background:

Synaptophysin (p38) is an integral membrane protein of small synaptic vesicles in brain and endocrine cells. Synaptophysin contains four transmembrane domains that form a hexameric channel or gap junction-like pore. Synaptophysin binds to the SNARE protein synaptobrevin/VAMP, which prevents the inclusion of synaptobrevin in the synaptic vesicle fusion complex and creates a pool of synaptobrevin for exocytosis when synapse activity increases. Synaptophysin is also responsible for targeting synaptobrevin 2/VAMP2 to synaptic vesicles, a critical component of the fusion complex.

Synonyms:

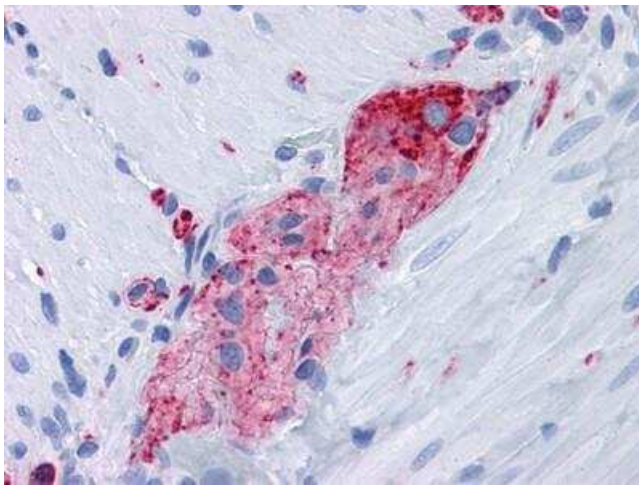
MRX96; MRXSYP

Note:

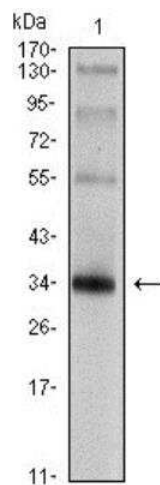
This Synaptophysin (7H12) antibody is useful in Western Blot, ELISA, and Immunohistochemistry on paraffin-embedded sections.

Protein Families:

Secreted Protein, Transmembrane

Product images:


Immunohistochemistry-Paraffin: Synaptophysin Antibody (7H12) TA336774 - Analysis of paraffin-embedded human small intestine, myenteric plexus tissues using anti-Synaptophysin mouse mAb.



Western Blot: Synaptophysin Antibody (7H12) TA336774 - Analysis using Synaptophysin mouse mAb against rat brain tissue lysate.