

Product datasheet for **TA336769**

CD44 Mouse Monoclonal Antibody [Clone ID: 8E2F3]

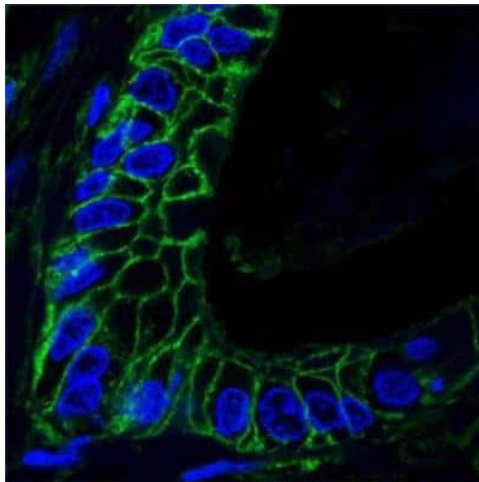
Product data:

Product Type:	Primary Antibodies
Clone Name:	8E2F3
Applications:	ELISA, FC, ICC/IF, IHC, IP, WB
Recommended Dilution:	Western Blot, Immunoprecipitation, Flow Cytometry: 1:200-1:400, ELISA: 1:10000, Immunocytochemistry/ Immunofluorescence: 1:200-1:1000, Immunohistochemistry-Paraffin: 1:200-1:1000, Flow (Intracellular), Immunohistochemistry: 1:200-1:1000
Reactivity:	Human, Mouse (Does not react with: Rabbit)
Host:	Mouse
Isotype:	IgG1
Clonality:	Monoclonal
Immunogen:	Purified recombinant fragment of human CD44 (628-699) expressed in E. coli. [UniProt# P16070]
Formulation:	PBS, 0.03% Sodium Azide. Store at 4C short term. Aliquot and store at -20C long term. Avoid freeze-thaw cycles.
Concentration:	lot specific
Purification:	Ammonium sulfate precipitation
Conjugation:	Unconjugated
Storage:	Store at -20°C as received.
Stability:	Stable for 12 months from date of receipt.
Predicted Protein Size:	82 kDa
Gene Name:	CD44 molecule (Indian blood group)
Database Link:	NP_000601 Entrez Gene 12505 Mouse Entrez Gene 960 Human P16070

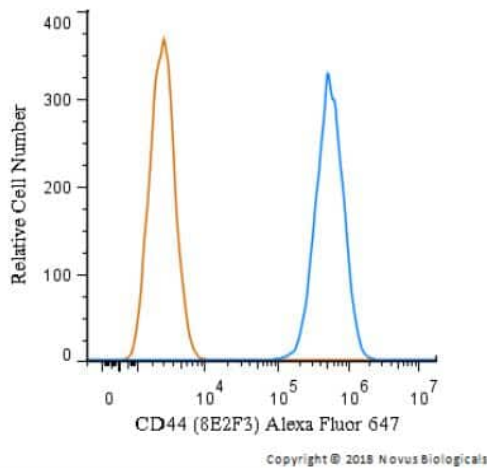


[View online »](#)

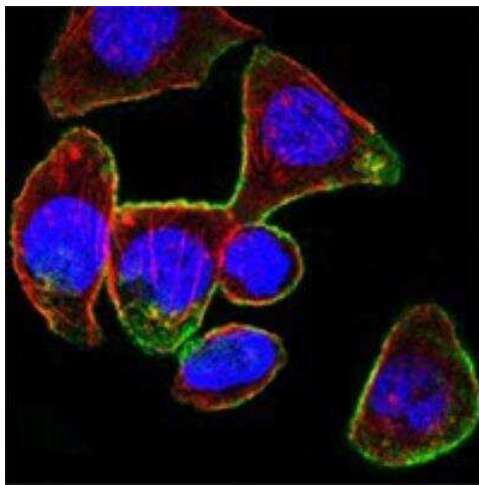
Background:	CD44, also known as IN, LHRMIC4, CDW44, HCELL, is a cell-surface glycoprotein involved in cell-cell interactions, cell adhesion and migration. It is a receptor for hyaluronic acid (HA) and can also interact with other ligands, such as osteopontin, collagens, and matrix metalloproteinases (MMPs). This protein participates in a wide variety of cellular functions including lymphocyte activation, recirculation and homing, hematopoiesis, and tumor metastasis. Transcripts for this gene undergo complex alternative splicing that results in many functionally distinct isoforms, however, the full length nature of some of these variants has not been determined. Alternative splicing is the basis for the structural and functional diversity of this protein, and may be related to tumor metastasis.
Synonyms:	CDW44; CSPG8; ECMR-III; HCELL; HUTCH-I; IN; LHR; MC56; MDU2; MDU3; MIC4; Pgp1
Note:	This CD44 (8E2F3) antibody is useful for Western blot, Immunohistochemistry on paraffin-embedded sections, Immunocytochemistry/Immunofluorescence, Flow Cytometry and ELISA.
Protein Families:	Adult stem cells, Cancer stem cells, Druggable Genome, Embryonic stem cells, ES Cell Differentiation/IPS, Stem cell relevant signaling - DSL/Notch pathway, Transmembrane
Protein Pathways:	ECM-receptor interaction, Hematopoietic cell lineage

Product images:

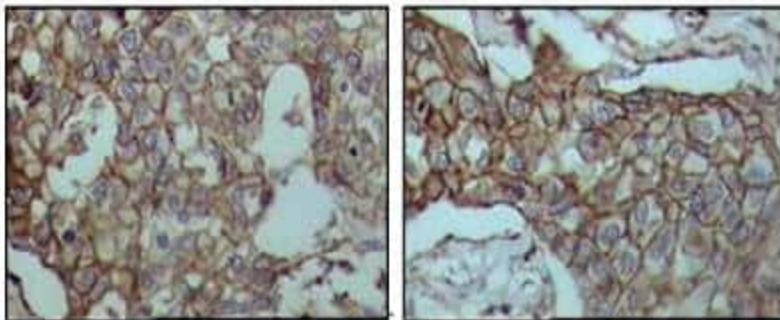
Immunocytochemistry/Immunofluorescence: CD44 Antibody (8E2F3) TA336769 - Analysis of paraffin-embedded human lung cancer tissues using anti-CD44 mAb (green), showing membrane localization. DRAQ5 fluorescent DNA dye (blue).



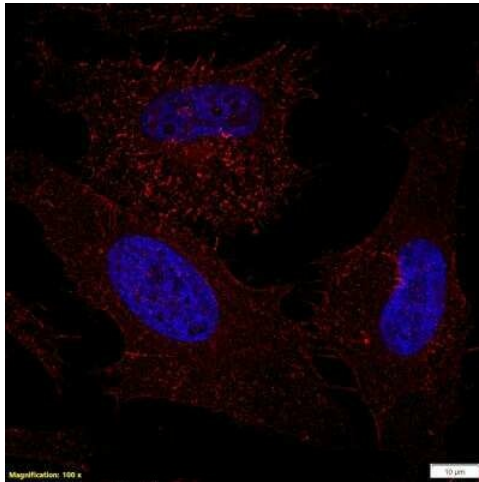
Flow (Intracellular): CD44 Antibody (8E2F3) TA336769 - An intracellular stain was performed on HeLa cells with TA336769AF647 (blue) and a matched isotype control (orange). Cells were fixed with 4% PFA and then permeabilized with 0.1% saponin. Cells were incubated in an antibody dilution of 2.5 ug/mL for 30 minutes at room temperature. Both antibodies were conjugated to Alexa Fluor 647.



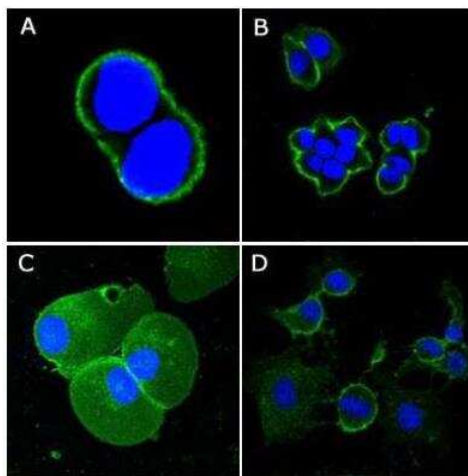
Immunocytochemistry/Immunofluorescence: CD44 Antibody (8E2F3) TA336769 - Analysis of PANC-1 cells using anti-CD44 mAb (green). Actin filaments have been labeled with DY-554 phalloidin (red). DRAQ5 fluorescent DNA dye (blue).



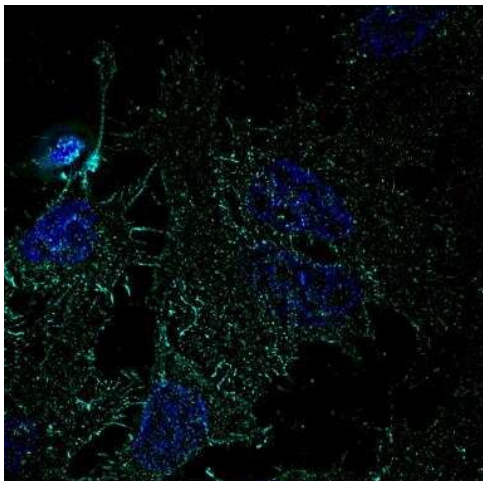
Immunohistochemistry-Paraffin: CD44 Antibody (8E2F3) TA336769 - Analysis of FFPE human breast carcinoma tissues using CD44 antibody (8E2F3). The signal was developed using DAB based detection and the sections were processed for counterstaining with hematoxylin. The antibody generated mainly a membrane staining representative of CD44 protein.



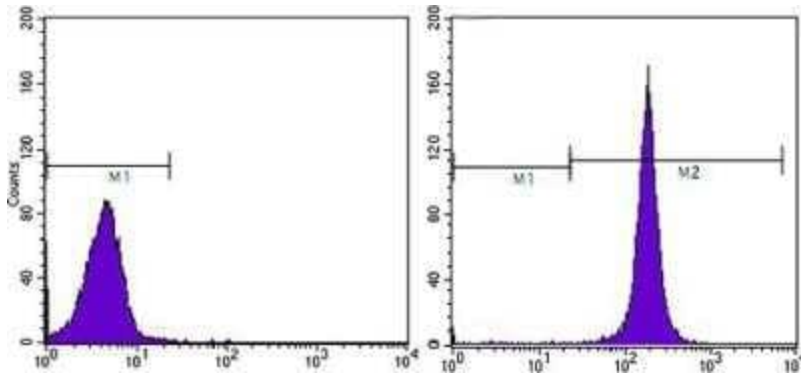
Immunocytochemistry/Immunofluorescence: CD44 Antibody (8E2F3) TA336769 - HeLa cells were fixed in 4% paraformaldehyde for 10 minutes and permeabilized in 0.05% Triton X-100 in PBS for 5 minutes. The cells were incubated with anti-CD44 Antibody [8E2F3] conjugated to DyLight 550 (TA336769R) at 5 ug/ml for 1 hour at room temperature. Nuclei were counterstained with DAPI (Blue). Cells were imaged using a 100X objective and digitally deconvolved.



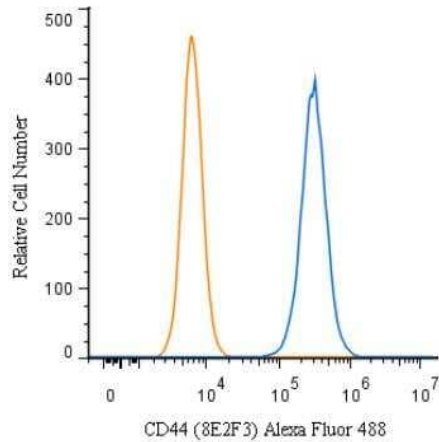
Immunocytochemistry/Immunofluorescence: CD44 Antibody (8E2F3) TA336769 - Analysis of methanol-fixed A431 (A), HeLa (B), PANC-1 (C) and EC (D) cells using anti-CD44 mAb (green), showing membrane localization. DRAQ5 fluorescent DNA dye (blue).



Immunocytochemistry/Immunofluorescence: CD44 Antibody (8E2F3) TA336769 - HeLa cells were fixed in 4% paraformaldehyde for 10 minutes and permeabilized in 0.05% Triton X-100 in PBS for 5 minutes. The cells were incubated with CD44 Antibody [8E2F3] conjugated to Alexa Fluor 647 (TA336769AF647) at 5 ug/ml for 1 hour at room temperature. Nuclei were counterstained with DAPI (Blue). Cells were imaged using a 100X objective and digitally deconvolved.



Flow Cytometry: CD44 Antibody (8E2F3) TA336769 - Analysis of HeLa cells using anti-CD44 mAb (right) and negative control (left).



Flow Cytometry: CD44 Antibody (8E2F3) TA336769 - An intracellular stain was performed on HeLa cells with TA336769AF488 (blue) and a matched isotype control (orange). Cells were fixed with 4% PFA and then permeablized with 0.1% saponin. Cells were incubated in an antibody dilution of 5 ug/mL for 30 minutes at room temperature. Both antibodies were conjugated to Alexa Fluor 488.

Copyright © 2018 Novus Biologicals