

Product datasheet for **TA336762**

HOMER1 Rabbit Polyclonal Antibody

Product data:

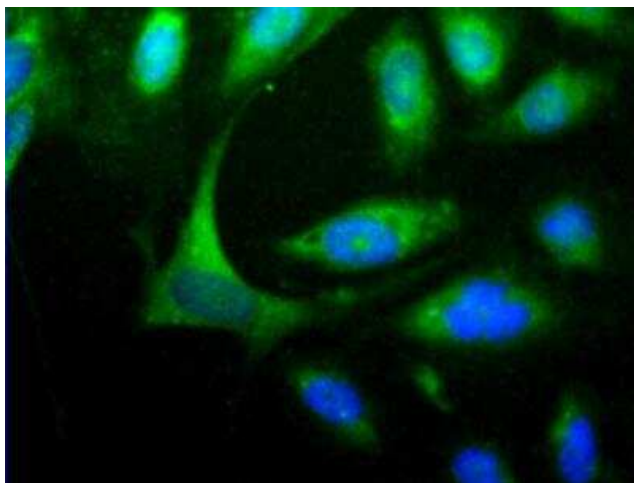
Product Type:	Primary Antibodies
Applications:	ICC/IF, WB
Recommended Dilution:	Immunocytochemistry/ Immunofluorescence: 1:100, Western Blot: 1:1000
Reactivity:	Human, Mouse
Host:	Rabbit
Clonality:	Polyclonal
Immunogen:	N-terminal partial recombinant human HOMER protein expressed in E. coli. [Swiss-Prot# Q86YM7]
Formulation:	Store at 4C short term. Aliquot and store at -20C long term. Avoid freeze-thaw cycles.
Concentration:	lot specific
Purification:	Whole antisera
Conjugation:	Unconjugated
Storage:	Store at -20°C as received.
Stability:	Stable for 12 months from date of receipt.
Predicted Protein Size:	40 kDa
Gene Name:	homer scaffolding protein 1
Database Link:	NP_004263 Entrez Gene 26556 Mouse Entrez Gene 9456 Human Q86YM7
Background:	Homer 1 (Homer protein homolog 1) belongs to the Homer family of proteins that regulate signal transduction through, and the trafficking of, glutamate receptors, as well as maintain and regulate extracellular glutamate levels in corticolimbic brain regions. The Homer 1 is enriched at excitatory synapses and binds group 1 metabotropic glutamate receptors (mGluRs).
Synonyms:	HOMER; HOMER1A; HOMER1B; HOMER1C; SYN47; Ves-1
Note:	This HOMER1 antibody is useful in Immunocytochemistry/Immunofluorescence and Western blot, where a band at ~40 kDa is observed.



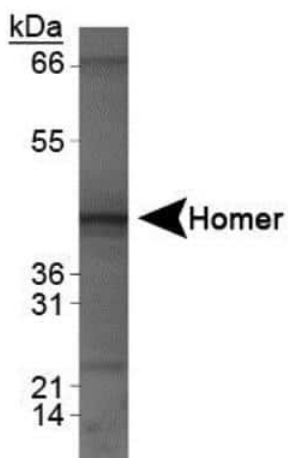
[View online »](#)

Protein Families: Druggable Genome

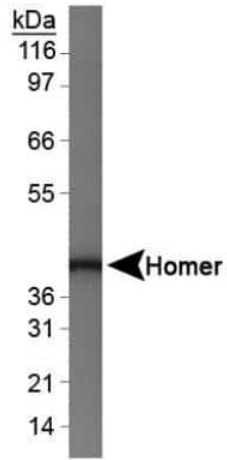
Product images:



Immunocytochemistry/Immunofluorescence:
HOMER1 Antibody TA336762 - Detection of
HOMER1 (Green) in HeLa cells using TA336762.
Nuclei (Blue) are counterstained using Hoechst
33258.



Western Blot: HOMER1 Antibody TA336762 -
Analysis of HOMER1 on human brain lysate.



Western Blot: HOMER1 Antibody TA336762 - Analysis of HOMER1 on mouse brain lysate.