

Product datasheet for **TA336756**

Kv1.2 (KCNA2) Rabbit Polyclonal Antibody

Product data:

Product Type:	Primary Antibodies
Applications:	WB
Recommended Dilution:	WB: 1:500-1:1000, IP: 1:10-1:500
Reactivity:	Human, Mouse, Rat, Bovine, Canine, Porcine, Xenopus
Host:	Rabbit
Clonality:	Polyclonal
Immunogen:	Synthetic peptide made to rat Kv1.2 (within residues 50-100), which is identical in all members of the Kv1 family.
Formulation:	PBS, 0.05% Sodium Azide. Store at 4C short term. Aliquot and store at -20C long term. Avoid freeze-thaw cycles.
Concentration:	lot specific
Purification:	Immunogen affinity purified
Conjugation:	Unconjugated
Storage:	Store at -20°C as received.
Stability:	Stable for 12 months from date of receipt.
Predicted Protein Size:	80 kDa
Gene Name:	potassium voltage-gated channel subfamily A member 2
Database Link:	NP_004965 Entrez Gene 16490 Mouse Entrez Gene 25468 Rat Entrez Gene 3737 Human P16389
Background:	Kv1 is a subfamily (also called the Shaker family) of voltage-gated potassium channels containing at least seven members. Potassium channels represent the most complex class of voltage-gated ion channels from both functional and structural standpoints. Their diverse functions include regulating neurotransmitter release, heart rate, insulin secretion, neuronal excitability, epithelial electrolyte transport, smooth muscle contraction, and cell volume. The Kv1 subfamily may be important in the regulation of the fast repolarizing phase of action potentials in heart and thus may influence the duration of cardiac action potential.
Synonyms:	EIEE32; HBK5; HK4; HUKIV; KV1.2; MK2; NGK1; RBK2

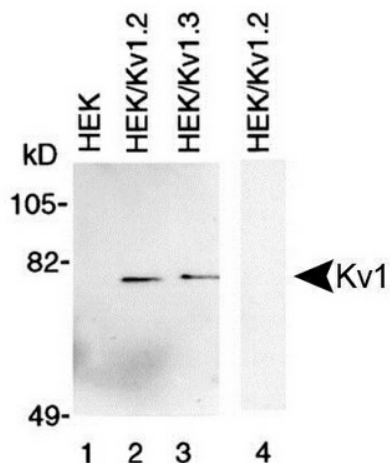


[View online »](#)

Note: This Kv1 antibody is useful for Immunoprecipitation and Western blot, where a band can be seen at ~80 kDa.

Protein Families: Druggable Genome, Ion Channels: Potassium, Transmembrane

Product images:



Western Blot: Kv1 Antibody TA336756 - Membrane preparations from HEK-293 cells untransfected (lane 1) transfected with Kv1.2 (lanes 2 and 4) and transfected with Kv1.3 (lane 3) were subjected to 10% SDS-PAGE and were Western blotted with Kv1 Antibody (T