

## Product datasheet for **TA336752**

### LOX Rabbit Polyclonal Antibody

#### Product data:

Product Type:	Primary Antibodies
Applications:	FC, ICC/IF, IP, Simple Western, WB
Recommended Dilution:	Immunoprecipitation: 1:10-1:500, Flow Cytometry: 1:200, Immunocytochemistry/ Immunofluorescence: 1:200, Western Blot: 0.5 ug/ml, Simple Western: 1:200
Reactivity:	Human, Rat
Host:	Rabbit
Clonality:	Polyclonal
Immunogen:	Synthetic peptide made to an internal portion of human LOX propeptide (within residues 118-168). [Swiss-Prot# P28300]
Formulation:	PBS, 0.05% Sodium Azide. Store at 4C short term. Aliquot and store at -20C long term. Avoid freeze-thaw cycles.
Concentration:	lot specific
Purification:	Immunogen affinity purified
Conjugation:	Unconjugated
Storage:	Store at -20°C as received.
Stability:	Stable for 12 months from date of receipt.
Gene Name:	lysyl oxidase
Database Link:	<a href="#">NP_002308</a> <a href="#">Entrez Gene 24914 Rat</a> <a href="#">Entrez Gene 4015 Human</a> <a href="#">P28300</a>



[View online »](#)

**Background:**

Lysyl oxidase (LOX) is a critical enzyme in extracellular matrix biosynthesis as well as in the maintenance of normal bone phenotype. It is synthesized/secreted as a 50-kD proenzyme 'pro-LOX' which is then processed to 30-kD mature enzyme 'LOX' and 18-kD lysyl oxidase propeptide 'LOX-PP' by extracellular procollagen C-proteinases (BMP1, TII1, and TII2). LOX-PP has been proposed to implicate in the maintenance of inactive state of LOX within the secretory pathway and to act as intramolecular chaperones which facilitate the accurate protein folding/targeting to correct destinations. LOX-PP involves tumor suppression by inhibiting RAS-dependent cellular transformation and its expression has also been associated with inhibition of anchorage-independent progression as well as migration and growth suppression xenografts in Her-2/neu-driven breast cancer. LOX-PP also inhibits PI3K/AKT and ERK1/2 MAP kinase pathways, as well as the levels of downstream NF- $\kappa$ B/cyclin D1 signals in certain cancers - breast, pancreatic, lung, prostate and oral cancers. LOX-PP has also been shown to inhibit DNA synthesis in rat's VSMCs cultures, osteoblast proliferation and FGF-2 signaling.

**Synonyms:**

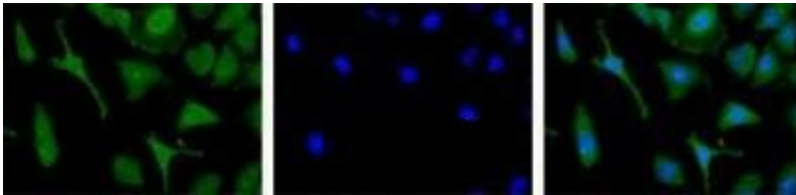
MGC105112

**Note:**

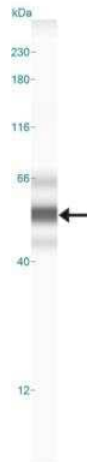
This LOX propeptide antibody is useful for Flow Cytometry, Immunocytochemistry/Immunofluorescence, Immunoprecipitation (PMID: 21536655) and Western Blot. In WB a band can be seen at ~35 kDa (glycosylated propeptide form) and at ~50 kDa (proenzyme form).

**Protein Families:**

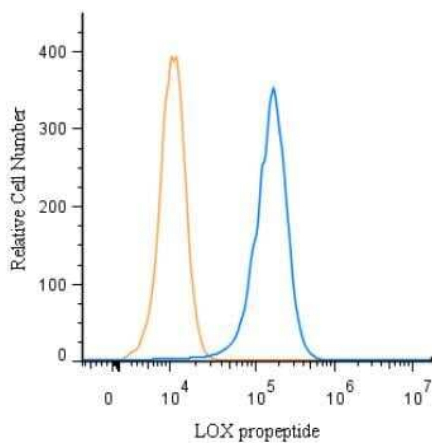
Druggable Genome, Secreted Protein

**Product images:**

Immunocytochemistry/Immunofluorescence: LOX propeptide Antibody TA336752 - Staining in HeLa cells detected with a Dylight 488 labeled secondary antibody (Green) with Hoechst 33258 nuclear counterstain (Blue).

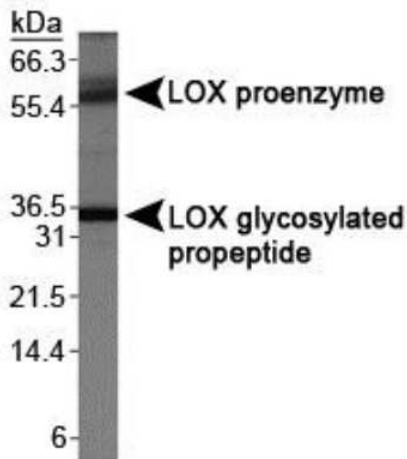


Simple Western: LOX propeptide Antibody TA336752 - Simple Western lane view shows a specific band for LOX in 0.5 mg/ml of MCF-7 lysate. This experiment was performed under reducing conditions using the 12-230 kDa separation system.



Flow Cytometry: LOX propeptide Antibody TA336752 - An intracellular stain was performed on HeLa with LOX propeptide Antibody TA336752 and a matched isotype control. Cells were fixed with 4% PFA and then permeabilized with 0.1% saponin. Cells were incubated in an antibody dilution of 1 ug/mL for 30 minutes at room temperature, followed by Rabbit IgG (H+L) Cross-Adsorbed Secondary Antibody, .

Copyright © 2018 Novus Biologicals



Western Blot: LOX propeptide Antibody TA336752 - Analysis of LOX propeptide on MDA-MB-231 using TA336752.