

## Product datasheet for **TA336751**

### LOX Rabbit Polyclonal Antibody

#### Product data:

Product Type:	Primary Antibodies
Applications:	WB
Recommended Dilution:	WB: 0.35 ug/ml, IF: 1:10-1:500, IHC: 1:10-1:500
Reactivity:	Human, Mouse
Host:	Rabbit
Clonality:	Polyclonal
Immunogen:	A synthetic peptide made to an internal region of mouse LOX propeptide (within residues 135-155). [Swiss-Prot P28301]
Formulation:	PBS, 0.05% Sodium Azide. Store at 4C short term. Aliquot and store at -20C long term. Avoid freeze-thaw cycles.
Concentration:	lot specific
Purification:	Immunogen affinity purified
Conjugation:	Unconjugated
Storage:	Store at -20°C as received.
Stability:	Stable for 12 months from date of receipt.
Predicted Protein Size:	50 kDa
Gene Name:	lysyl oxidase
Database Link:	<a href="#">NP_002308</a> <a href="#">Entrez Gene 16948 Mouse</a> <a href="#">Entrez Gene 4015 Human</a> <a href="#">P28300</a>



[View online »](#)

**Background:**

Lysyl oxidase (LOX) is a critical enzyme in extracellular matrix biosynthesis as well as in the maintenance of normal bone phenotype. It is synthesized/secreted as a 50-kD proenzyme 'pro-LOX' which is then processed to 30-kD mature enzyme 'LOX' and 18-kD lysyl oxidase propeptide 'LOX-PP' by extracellular procollagen C-proteinases (BMP1, Tll1, and Tll2). LOX-PP has been proposed to implicate in the maintenance of inactive state of LOX within the secretory pathway and to act as intramolecular chaperones which facilitate the accurate protein folding/targeting to correct destinations. LOX-PP involves tumor suppression by inhibiting RAS-dependent cellular transformation and its expression has also been associated with inhibition of anchorage-independent progression as well as migration and growth suppression xenografts in Her-2/neu-driven breast cancer. LOX-PP also inhibits PI3K/AKT and ERK1/2 MAP kinase pathways, as well as the levels of downstream NF- $\kappa$ B/cyclin D1 signals in certain cancers - breast, pancreatic, lung, prostate and oral cancers. LOX-PP has also been shown to inhibit DNA synthesis in rat's VSMCs cultures, osteoblast proliferation and FGF-2 signaling.

**Synonyms:**

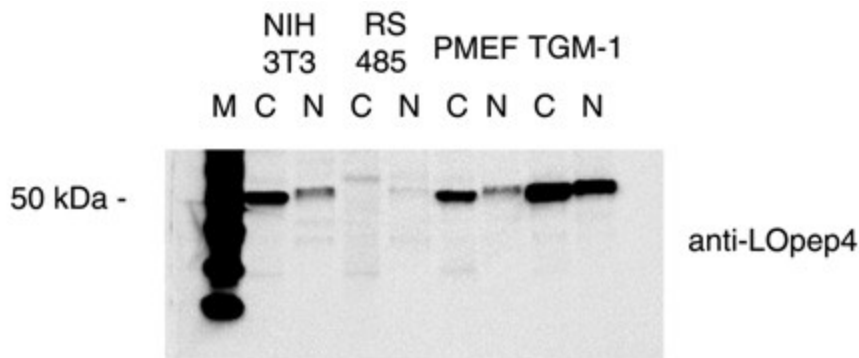
MGC105112

**Note:**

This LOX propeptide antibody is useful for Immunocytochemistry/Immunofluorescence, Immunohistochemistry and Western blot, where a band is seen ~50 kDa.

**Protein Families:**

Druggable Genome, Secreted Protein

**Product images:**

Western Blot: LOX propeptide Antibody TA336751 - Western blot on cytoplasmic & nuclear (n) extracts of NIH 3T3, ras-transformed (RS 485), PMEF and TGM-1 mouse fibroblast cells.