

## Product datasheet for **TA336748**

### **clAP2 (BIRC3) Rabbit Polyclonal Antibody**

#### **Product data:**

Product Type:	Primary Antibodies
Applications:	ICC/IF, IHC, Simple Western, WB
Recommended Dilution:	Immunohistochemistry: 1:800-1:3200, Immunocytochemistry/ Immunofluorescence: 1:100, Immunohistochemistry-Paraffin: 1:800-1:3200, Simple Western: 1:100, Western Blot: 1 ug/ml
Reactivity:	Human
Host:	Rabbit
Clonality:	Polyclonal
Immunogen:	Synthetic peptide made to an internal portion of human clAP2 (within residues 100-200). [Swiss-Prot# Q13489]
Formulation:	PBS, 0.05% Sodium Azide. Store at 4C short term. Aliquot and store at -20C long term. Avoid freeze-thaw cycles.
Concentration:	lot specific
Purification:	Immunogen affinity purified
Conjugation:	Unconjugated
Storage:	Store at -20°C as received.
Stability:	Stable for 12 months from date of receipt.
Predicted Protein Size:	64 kDa
Gene Name:	baculoviral IAP repeat containing 3
Database Link:	<a href="#">NP_892007</a> <a href="#">Entrez Gene 330 Human</a> <a href="#">Q13489</a>



[View online »](#)

**Background:**

c-IAP2 (inhibitor of apoptosis protein-2) belongs to IAPs family and besides exerting antiapoptotic effects through its interaction with multiple cytokines, it participates in inflammation, immunity and mitogenic kinase signal transduction, cell proliferation, invasion and metastasis also. With its E3 ubiquitin-protein ligase activity via interaction with several proteins such as RIPK1, RIPK2, RIPK3, RIPK4, CASP3, CASP7, CASP8, TRAF1, BCL10 etc., c-IAP2 can regulate NFkB signaling - positive regulation of canonical and negative regulation of non-canonical pathway. c-IAP2 participates in innate immunity via regulation of pattern recognition receptors- TLRs, NLRs and RLRs, and facilitates ubiquitination of RIPK1/CASP8 for preventing spontaneous formation of ripoptosome - a multi-protein complex which kills cancer cells in caspase-dependent/independent pathways. Knockout of c-IAP2 leads to excessive apoptosis, whereas, its overexpression has been found in several malignancies such as lymphoma and ovarian, colon, cervical cancer etc, and c-IAP2 chromosomal aberrations have been linked MALT lymphoma. c-IAP2 expression is low in normal tissues whereas in cancer its expression increases with the tumor grade and is often correlate with drug resistance, tumor recurrence, invasion and metastasis etc.

**Synonyms:**

AIP1; API2; c-IAP2; CIAP2; HAIP1; HIAP1; MALT2; MIHC; RNF49

**Note:**

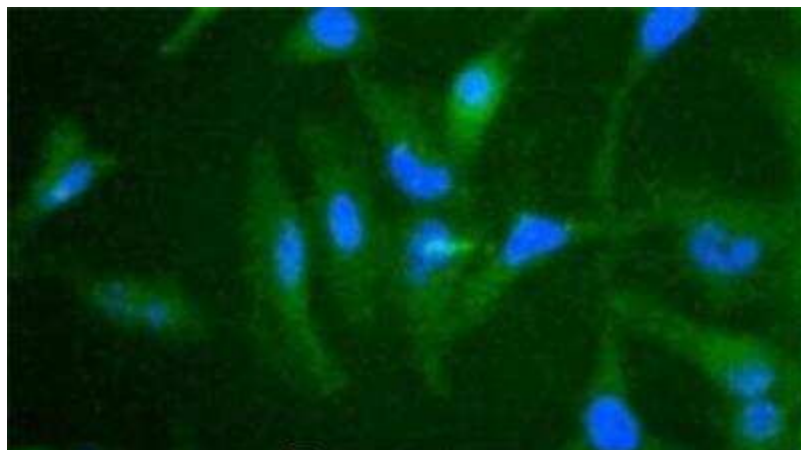
This cIAP2 antibody is useful for Immunocytochemistry/Immunofluorescence, Immunohistochemistry paraffin embedded sections and Western blot analysis, where a band can be seen at ~64 kDa.

**Protein Families:**

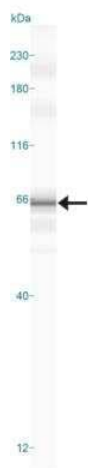
Druggable Genome

**Protein Pathways:**

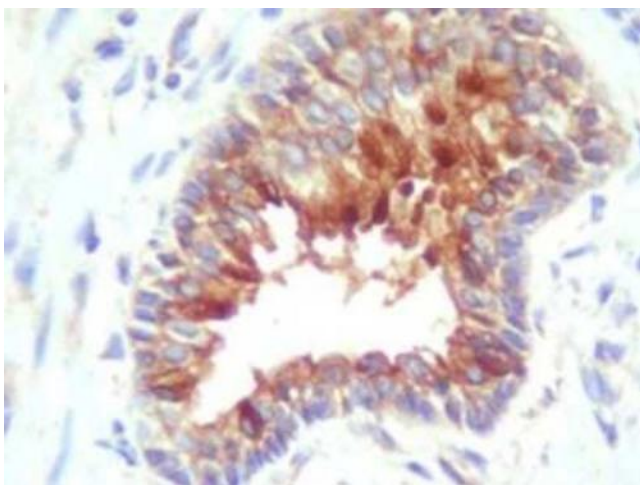
Apoptosis, Focal adhesion, NOD-like receptor signaling pathway, Pathways in cancer, Small cell lung cancer, Ubiquitin mediated proteolysis

**Product images:**


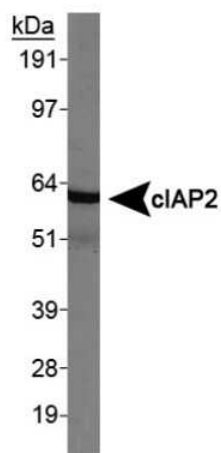
Immunocytochemistry/Immunofluorescence:  
cIAP-2/HIAP-1 Antibody TA336748 - HIAD1  
staining in Hela cells detected with a Dylight 488  
labeled secondary antibody (Green) with Hoechst  
33258 nuclear counterstain (Blue).



Simple Western: clAP-2/HiAP-1 Antibody TA336748 - Simple Western lane view shows a specific band for Clap2 in 0.5 mg/ml of HepG2 lysate. This experiment was performed under reducing conditions using the 12-230 kDa separation system. \*Non-specific interaction with the 230 kDa standard may be seen with this antibody.



Immunohistochemistry: clAP-2/HiAP-1 Antibody TA336748 - Analysis of human adenocarcinoma cells and adjacent glands using anti-clAP2.



Western Blot: clAP-2/HiAP-1 Antibody TA336748 - HeLa whole cell lysate.