

Product datasheet for **TA336746**

CDCA8 Rabbit Polyclonal Antibody

Product data:

Product Type:	Primary Antibodies
Applications:	ICC/IF, WB
Recommended Dilution:	Western Blot: 2 ug/ml, Immunocytochemistry/ Immunofluorescence: 1:50-1:200
Reactivity:	Human
Host:	Rabbit
Clonality:	Polyclonal
Immunogen:	Synthetic peptide made to an internal portion of human Borealin (within residues 200-250). [Swiss-Prot# Q53HL2]
Formulation:	PBS, 0.05% Sodium Azide. Store at 4C short term. Aliquot and store at -20C long term. Avoid freeze-thaw cycles.
Concentration:	lot specific
Purification:	Immunogen affinity purified
Conjugation:	Unconjugated
Storage:	Store at -20°C as received.
Stability:	Stable for 12 months from date of receipt.
Predicted Protein Size:	38 kDa
Gene Name:	cell division cycle associated 8
Database Link:	NP_060571 Entrez Gene 55143 Human Q53HL2



[View online »](#)

Background:

Encoded by gene CDCA8, borealin forms an important component of mitosis regulating chromosomal passenger complex (CPC complex - BIRC5/survivin, CDCA8/borealin, INCENP, AURKB and AURKC) which is known for ensuring correct chromosome alignment/segregation and is required for chromatin-induced microtubule stabilization as well as spindle assembly. Borealin governs CPC to centromeric DNA and is a major effector of the TTK kinase in the control of attachment-error-correction and chromosome alignment. Besides associating with CPC complex subunits, borealin interact with SENP3, UBE2I and RANBP2 which are involved its sumoylation. Borealin is expressed in a cell cycle-dependent manner and the levels of endogenous borealin significantly increase during mitosis. TTK can phosphorylated borealin at Thr-88, Thr94, Thr-169 and Thr-230 and and mutation of S219 to alanine in borealin causes defects in mitotic progression advocating for the importance of phosphorylation in borealin function. Mutation of additional sites creates a form of borealin that is defective in localizing to the centromere, binding to Sgo1 and Sgo2, and in coordinating chromosome alignment.

Synonyms:

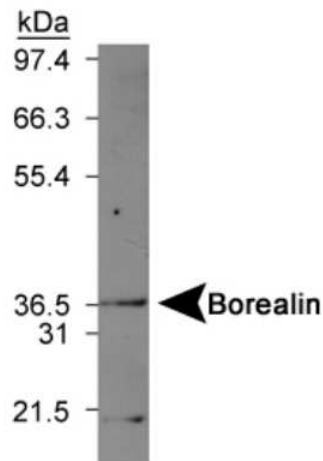
BOR; BOREALIN; DasraB; MESRGP

Note:

This Borealin antibody is useful for Immunocytochemistry/Immunofluorescence and Western blot, where a band can be seen ~38 kDa.

Protein Families:

Druggable Genome

Product images:

Western Blot: Borealin Antibody TA336746 - Mouse kidney lysate.