

Product datasheet for **TA336745**

FER Rabbit Polyclonal Antibody

Product data:

Product Type:	Primary Antibodies
Applications:	ICC/IF, WB
Recommended Dilution:	Immunocytochemistry/ Immunofluorescence: 1:500, Western Blot: 0.5 ug/ml, Knockdown Validated: 0.5 ug/ml
Reactivity:	Human
Host:	Rabbit
Clonality:	Polyclonal
Immunogen:	Synthetic peptide made to an internal portion of human FER (within residues 400-450). [Swiss-Prot# P16591]
Formulation:	PBS, 0.05% Sodium Azide. Store at 4C short term. Aliquot and store at -20C long term. Avoid freeze-thaw cycles.
Concentration:	lot specific
Purification:	Immunogen affinity purified
Conjugation:	Unconjugated
Storage:	Store at -20°C as received.
Stability:	Stable for 12 months from date of receipt.
Predicted Protein Size:	94 kDa
Gene Name:	FER tyrosine kinase
Database Link:	NP_005237 Entrez Gene 2241 Human P16591



[View online »](#)

Background: FER (Feline sarcoma related) is a ubiquitously expressed non-receptor protein tyrosine kinase with about 94-kD size that acts downstream of cell surface receptors for growth factors and plays a key role in regulating actin cytoskeleton, microtubule assembly, lamellipodia formation, cell adhesion, cell migration and chemotaxis. It acts downstream of EGFR, KIT, FCER1, PDGFRA/PDGFRB receptor etc and phosphorylates CTTN, CTNND1, PTK2/FAK1, GAB1, PECAM1, PTPN11, JUP, PTPN1 and STAT3. Similar to other tyrosine kinases, FER has a central Src-homology 2 (SH2) domain involved in binding to phosphotyrosine-containing peptide sequences and a highly conserved C-terminal kinase domain, whereas it is different by an NH2-terminal FER/CIP4 homology and adjacent coiled-coil domains. FER is expressed ubiquitously in human tissues and higher FER levels are observed in cancer cells compared with adjacent normal cells e.g. renal cell carcinoma.

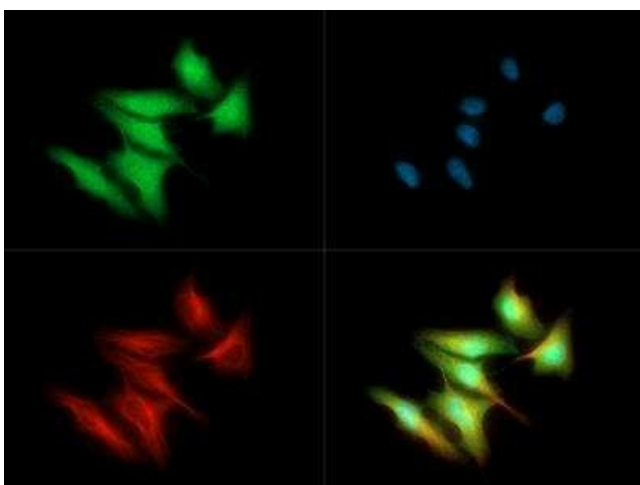
Synonyms: FerT; Pe1Fe3; Pe1Fe6; Pe1Fe10; Pe1Fe13; PPP1R74; TYK3

Note: This FER antibody is useful for Immunocytochemistry/Immunofluorescence and Western blot, where a band is seen ~94 kDa. In ICC/IF cytoplasmic staining was observed.

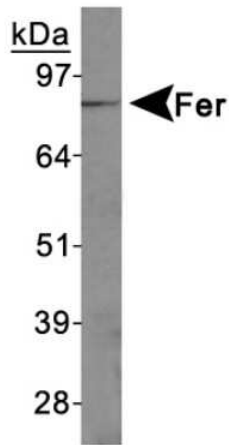
Protein Families: Druggable Genome, Protein Kinase

Protein Pathways: Adherens junction

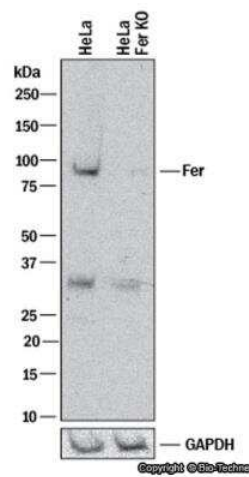
Product images:



Immunocytochemistry/Immunofluorescence: FER Antibody TA336745 - FER antibody was tested in HeLa cells with DyLight 488 (green). Nuclei and alpha-tubulin were counterstained with DAPI (blue) and Dylight 550 (red).



Western Blot: FER Antibody TA336745 - Jurkat cell lysates.



Knockdown Validated: Fer Antibody TA336745 - Western blot shows lysates of HeLa human cervical epithelial carcinoma parental cell line and Fer knockout (KO) HeLa cell line. PVDF membrane was probed with 0.5 ug/ml of Rabbit Anti-Human Fer Polyclonal Antibody (Catalog # TA336745) followed by HRP-conjugated Anti-Rabbit IgG Secondary Antibody (Catalog #HAF008). Specific band was detected for Fer at approximately 90 kDa (as indicated) in the parental HeLa cell line, but is not detectable in the knockout HeLa cell line. This experiment was conducted under reducing conditions.