

## Product datasheet for **TA336744**

### Cathepsin B (CTSB) Rabbit Polyclonal Antibody

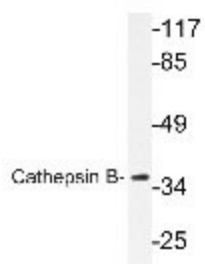
#### Product data:

Product Type:	Primary Antibodies
Applications:	IF, IHC, WB
Recommended Dilution:	WB: 1.0 - 2.0 ug/ml, IF: 1:50 - 1:100, IHC: 1:200, IHC-P: 1:200
Reactivity:	Human, Mouse, Rat
Host:	Rabbit
Clonality:	Polyclonal
Immunogen:	Synthetic peptide made to an internal portion of the human NFkB p65 protein (between residues 200-270) [UniProt P07858]
Formulation:	PBS, 0.05% Sodium Azide. Store at 4C short term. Aliquot and store at -20C long term. Avoid freeze-thaw cycles.
Concentration:	lot specific
Purification:	Immunogen affinity purified
Conjugation:	Unconjugated
Storage:	Store at -20°C as received.
Stability:	Stable for 12 months from date of receipt.
Gene Name:	cathepsin B
Database Link:	<a href="#">NP_680093</a> <a href="#">Entrez Gene 13030 Mouse</a> <a href="#">Entrez Gene 64529 Rat</a> <a href="#">Entrez Gene 1508 Human</a> <a href="#">P07858</a>
Background:	The cathepsin protease family contains several diverse classes of enzymes. Cathepsins B, L, H, K, S and O are part of the cysteine protease class. Cathepsin B is a dimer consisting of a heavy chain and a light chain cross-linked by a disulfide bond and is a lysosomal cysteine protease. Cathepsin B is expressed in luminal epithelial cells and its expression indicates that Cathepsin B is a marker for secretory cell death. Cathepsin B also participates in intracellular degradation and turnover of proteins.
Synonyms:	APPS; CPSB
Protein Families:	Druggable Genome, Protease
Protein Pathways:	Antigen processing and presentation, Lysosome

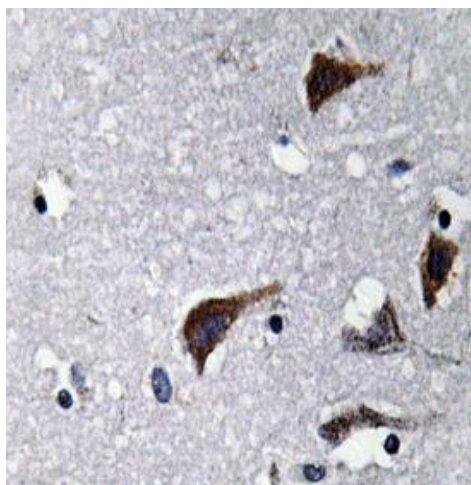


[View online »](#)

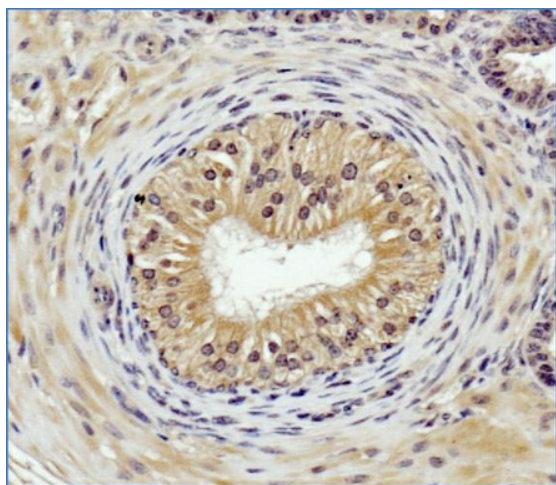
Product images:



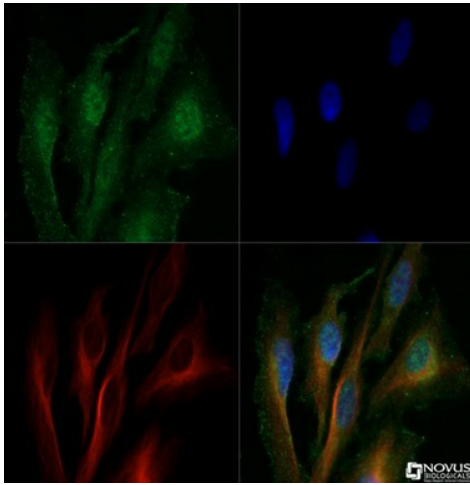
Western Blot: Cathepsin B Antibody TA336744 - extracts from COLO cells.



Immunohistochemistry-Paraffin: Cathepsin B Antibody TA336744 - Human brain tissue.



Immunohistochemistry-Paraffin: Cathepsin B Antibody TA336744 - Staining for Cathepsin B in mouse ureter.



Immunocytochemistry/Immunofluorescence:  
Cathepsin B Antibody TA336744 - Cathepsin B antibody was tested at 1:50 in HeLa cells with Dylight 488 (green). Nuclei and alpha-tubulin were counterstained with DAPI (blue) and Dylight 550 (red). Puncta staining