

Product datasheet for **TA336741**

PAI1 (SERPINE1) Rabbit Polyclonal Antibody

Product data:

Product Type:	Primary Antibodies
Applications:	ELISA, ICC/IF, IHC, WB
Recommended Dilution:	Immunocytochemistry/ Immunofluorescence: 5 - 10 ug/ml, Immunohistochemistry: 1:50 - 1:100, Immunohistochemistry-Frozen: 1:50 - 1:100, Immunohistochemistry-Paraffin: 1:50 - 1:100, Western Blot: 1.0 ug/ml, ELISA
Reactivity:	Human, Mouse, Rat
Host:	Rabbit
Clonality:	Polyclonal
Immunogen:	A synthetic peptide made to an internal portion of the human PAI1/Serpine 1 protein (between residues 300-400) [UniProt P05121]
Formulation:	PBS, 0.05% Sodium Azide. Store at 4C short term. Aliquot and store at -20C long term. Avoid freeze-thaw cycles.
Concentration:	lot specific
Purification:	Immunogen affinity purified
Conjugation:	Unconjugated
Storage:	Store at -20°C as received.
Stability:	Stable for 12 months from date of receipt.
Predicted Protein Size:	45 kDa
Gene Name:	serpin family E member 1
Database Link:	NP_000593 Entrez Gene 18787 Mouse Entrez Gene 24617 Rat Entrez Gene 5054 Human P05121



[View online »](#)

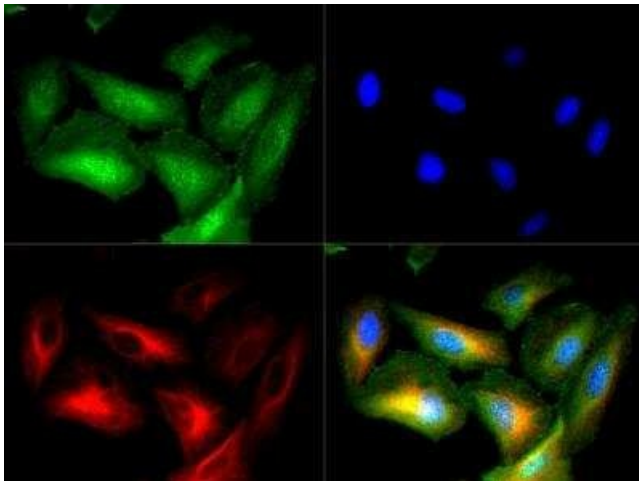
Background: PAI-1 and PAI-2 (for plasminogen activator inhibitor-1 and -2) are members of the serpin serine proteinase inhibitor family. PAI-1 and PAI-2 have been shown to regulate uPA (urokinase-type plasminogen activator) and tPA (tissue plasminogen activator), resulting in the inhibition of proteolytic activity. Members of the serpin family generally complex with their target proteinases, then disassociate slowly into cleaved species that fold into stable inactive forms. PAI-1 can fold into the inactive state without cleavage, resulting in the latent form of PAI-1. Activity can be restored to the latent form of PAI-1 through denaturation and renaturation. PAI-2 occurs in secreted and cytosolic forms through facultative polypeptide translocation. uPA is a serine proteinase that is a member of the trypsin family. It is responsible for the cleavage of plasminogen at the Arg-Val bond to produce plasmin. uPA consists of two chains designated A and B. The A chain can be cleaved, resulting in low and high molecular mass forms of uPA.

Synonyms: PAI; PAI-1; PAI1; PLANH1

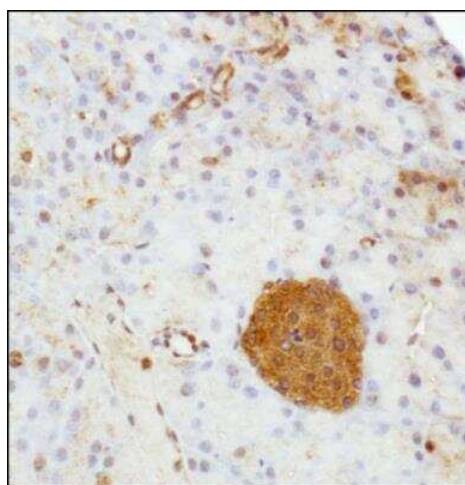
Protein Families: Druggable Genome, Secreted Protein

Protein Pathways: Complement and coagulation cascades, p53 signaling pathway

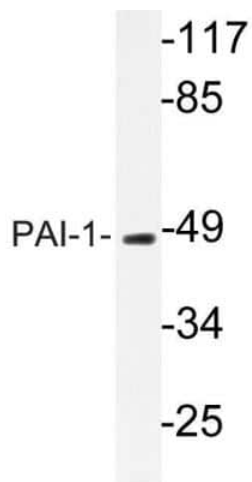
Product images:



Immunocytochemistry/Immunofluorescence:
Serpin E1/PAI-1 Antibody TA336741 -
PAI1/Serpine1 antibody was tested in HeLa cells
with DyLight 488 (green). Nuclei and alpha-
tubulin were counterstained with DAPI (blue) and
DyLight 550 (red).



Immunohistochemistry-Paraffin: Serpin E1/PAI-1 Antibody TA336741 - Staining of PAI1/Serpine 1 in mouse pancreas.



Western Blot: Serpin E1/PAI-1 Antibody TA336741 - Extracts from Jurkat cells.