

Product datasheet for **TA336740**

BMP2 Rabbit Polyclonal Antibody

Product data:

Product Type:	Primary Antibodies
Applications:	ICC/IF, IHC, WB
Recommended Dilution:	Immunocytochemistry/ Immunofluorescence, Immunohistochemistry: 1:50-1:200, Western Blot: 0.5 ug/ml, Immunohistochemistry-Paraffin: 1:50-1:200
Reactivity:	Human, Mouse, Rat
Host:	Rabbit
Clonality:	Polyclonal
Immunogen:	A synthetic peptide made to an internal region of human BMP2 (within residues 250-350) [Swiss-Prot# P12643]
Formulation:	PBS, 0.05% Sodium Azide. Store at 4C short term. Aliquot and store at -20C long term. Avoid freeze-thaw cycles.
Concentration:	lot specific
Purification:	Immunogen affinity purified
Conjugation:	Unconjugated
Storage:	Store at -20°C as received.
Stability:	Stable for 12 months from date of receipt.
Predicted Protein Size:	44 kDa
Gene Name:	bone morphogenetic protein 2
Database Link:	NP_001191 Entrez Gene 12156 Mouse Entrez Gene 29373 Rat Entrez Gene 650 Human P12643

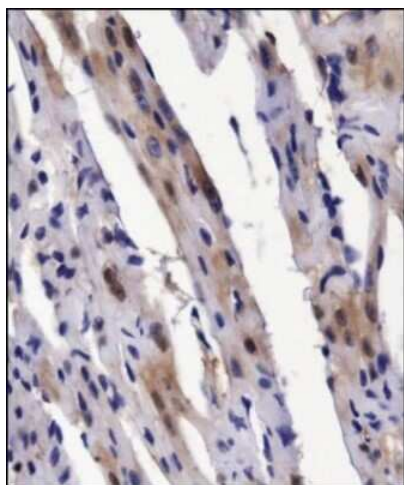


[View online »](#)

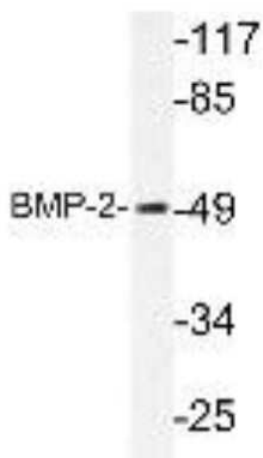
- Background:** Bone morphogenic protein 2 is required for effective healing of fractures in bone. It is necessary for the expression of transcription factors that regulate osteogenesis and differentiation of progenitor cells into mature osteoblasts. Embryologically, BMP2 is important in mesenchymal maturation to fetal valves. The same mechanism of maturation is also utilized by tumor molecular machinery once mesenchymal stem cells are recruited to tumor microenvironments, leading to many recent attempts to generate BMP inhibitors in the treatment of ovarian and colon cancer. The activity of BMP2 is antagonized by the activity of Bambi and Crim1. BMP2 is an interesting target for distinguishing the mechanism by which normal and necessary maturation processes are mutated in tumorigenesis.
- Synonyms:** BDA2; BMP2A
- Note:** This BMP2 antibody is useful for Immunohistochemistry-Paraffin and Western Blot, where a band is seen ~44 kDa. Prior to immunostaining paraffin tissues, antigen retrieval with sodium citrate buffer (pH 6.0) is recommended.
- Protein Families:** Adult stem cells, Cancer stem cells, Druggable Genome, Embryonic stem cells, ES Cell Differentiation/IPS, Induced pluripotent stem cells, Secreted Protein, Stem cell relevant signaling - TGFb/BMP signaling pathway, Transmembrane
- Protein Pathways:** Acute myeloid leukemia, Basal cell carcinoma, Cytokine-cytokine receptor interaction, Endocytosis, Hedgehog signaling pathway, Hematopoietic cell lineage, Melanogenesis, Pathways in cancer, TGF-beta signaling pathway

Product images:

Immunohistochemistry-Paraffin: BMP-2 Antibody - BSA Free TA336740 - Paraffin-embedded human heart tissue.



Immunohistochemistry: BMP-2 Antibody - BSA Free TA336740 - Analysis of BMP2 in mouse heart using DAB with hematoxylin counterstain.



Western Blot: BMP-2 Antibody - BSA Free TA336740 - Extracts from HUVEC cells.