

Product datasheet for **TA336739**

SHARP1 (BHLHE41) Rabbit Polyclonal Antibody

Product data:

Product Type:	Primary Antibodies
Applications:	IHC, Simple Western, WB
Recommended Dilution:	Immunohistochemistry-Paraffin: 1:100, Simple Western: 1:50, Immunohistochemistry: 1:100, Western Blot: 1 - 2 ug/ml
Reactivity:	Human, Mouse, Rat
Host:	Rabbit
Clonality:	Polyclonal
Immunogen:	A synthetic peptide made to an internal portion of the human PAI1/Serpine 1 protein (between residues 1-75) [UniProt Q9C0J9]
Formulation:	PBS, 0.05% Sodium Azide. Store at 4C short term. Aliquot and store at -20C long term. Avoid freeze-thaw cycles.
Concentration:	lot specific
Purification:	Immunogen affinity purified
Conjugation:	Unconjugated
Storage:	Store at -20°C as received.
Stability:	Stable for 12 months from date of receipt.
Predicted Protein Size:	50 kDa
Gene Name:	basic helix-loop-helix family member e41
Database Link:	NP_110389 Entrez Gene 79362 Mouse Entrez Gene 117095 Rat Entrez Gene 79365 Human Q9C0J9



[View online »](#)

Background:

SHARP1 also known as DEC2 and BHLHe41 encodes a transcription factor that belongs to the Hairy/Enhancer of Split subfamily of basic helix-loop-helix factors (bHLH). However, sequence alignment shows that SHARP-1 is only distantly related to these proteins, exhibiting 37-42% sequence identity within the bHLH domain. Unlike most bHLH proteins, SHARP-1 is not expressed in neuronal progenitor cells or early differentiating neurons but is restricted to a subset of neurons of the postnatal central nervous system. Recent studies have shown DEC2 plays a regulatory role in clockwork system along with Clock and Bmal1. DEC1, a structurally related protein also known as SHARP2 along with DEC2 works as the negative regulated of molecular clock. Mutations in this gene (hDEC2-P385R) are associated with short sleep phenotypes in human and transgenic mice carrying this mutation show increased vigilance time and less sleep time than control mice.

Synonyms:

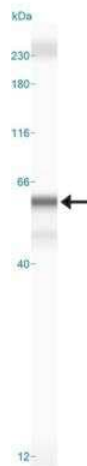
BHLHB3; DEC2; hDEC2; SHARP1

Protein Families:

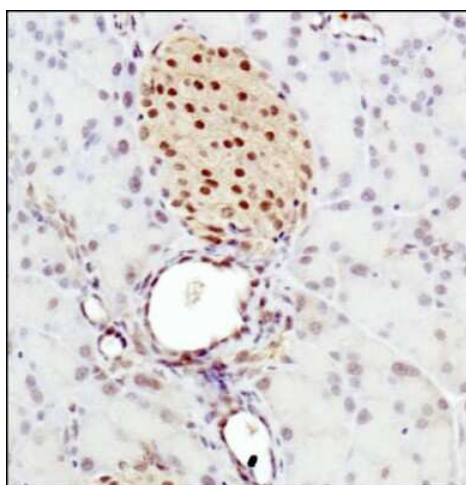
Transcription Factors

Protein Pathways:

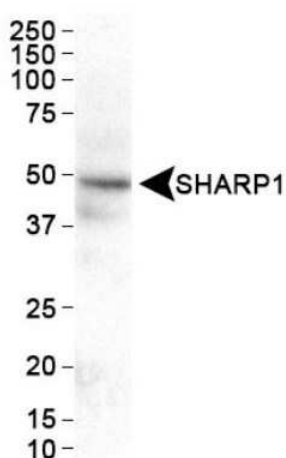
Circadian rhythm - mammal

Product images:

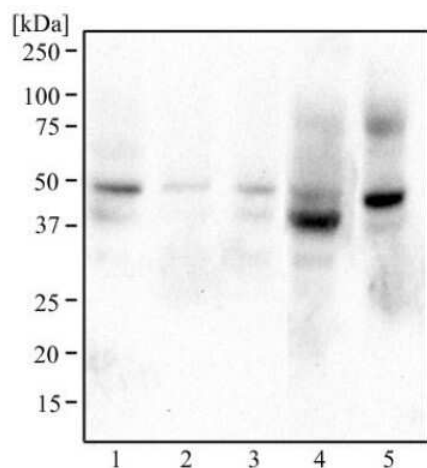
Simple Western: DEC2/SHARP1 Antibody TA336739 - Image shows a specific band for SHARP1 in 0.5 mg/mL of HeLa lysate. This experiment was performed under reducing conditions using the 12-230 kDa separation system.



Immunohistochemistry-Paraffin: DEC2/SHARP1 Antibody TA336739 - Staining of SHARP1 in mouse pancreas.



Western Blot: DEC2/SHARP1 Antibody TA336739 - Analysis of SHARP1 in HeLa whole cell extract.



Western Blot: DEC2/SHARP1 Antibody TA336739 - Analysis of HeLa (1), Raw 264.7 (2), A431 (3), MCF7 (4), and PC12 (5) using SHARP1 antibody at 2 ug/mL.