

Product datasheet for **TA336737**

EPOR Rabbit Polyclonal Antibody

Product data:

Product Type:	Primary Antibodies
Applications:	ICC/IF, IHC, Simple Western, WB
Recommended Dilution:	Immunohistochemistry: 1:50 - 1:100, Immunocytochemistry/ Immunofluorescence: 1:50 - 1:100, Western Blot: 2.0 ug/ml, Immunohistochemistry-Paraffin: 1:50-1:100, Simple Western: 1:10
Reactivity:	Human, Mouse, Rat
Host:	Rabbit
Clonality:	Polyclonal
Immunogen:	A synthetic peptide made to an internal portion of the human EPO receptor protein (between residues 300-400) [UniProt P19235]
Formulation:	PBS, 0.05% Sodium Azide. Store at 4C short term. Aliquot and store at -20C long term. Avoid freeze-thaw cycles.
Concentration:	lot specific
Purification:	Immunogen affinity purified
Conjugation:	Unconjugated
Storage:	Store at -20°C as received.
Stability:	Stable for 12 months from date of receipt.
Gene Name:	erythropoietin receptor
Database Link:	NP_000112 Entrez Gene 13857 Mouse Entrez Gene 24336 Rat Entrez Gene 2057 Human P19235



[View online »](#)

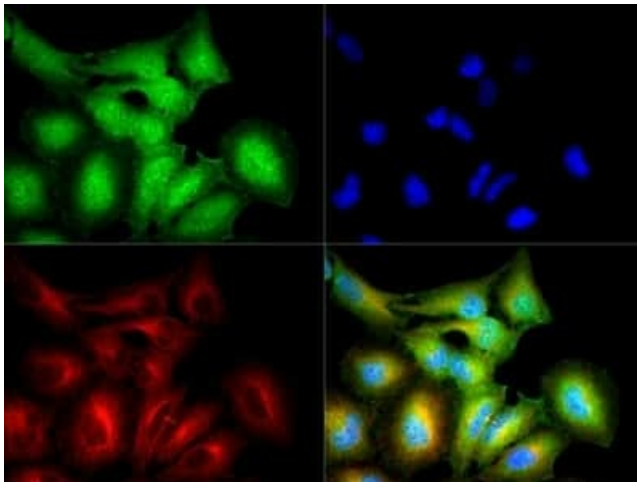
Background: The erythropoietin receptor (EPOR) is a cytokine receptor family member. There are three known isoforms of the receptor, EPOR-F (full length), EPOR-S (soluble form), and EPOR-T (truncated form). When bound to erythropoietin (EPO), EPOR is phosphorylated by Jak2 tyrosine kinase. Phosphorylated EPOR serves as the docking site for a number of different intracellular pathways including: Ras/MAP kinase, phosphatidylinositol 3-kinase and STAT transcription factors. EPOR-Stat5 signaling appears to play a role in erythroid cell survival. Animal studies have shown that truncated EPOR that can still be bound by Jak2 are viable, suggesting that basal Jak2 activity is sufficient for erythropoiesis. Stat5 binding is important, as a mutated Tyr343 on EPOR results in anemia and poor response to hypoxic stress.

Synonyms: EPO-R

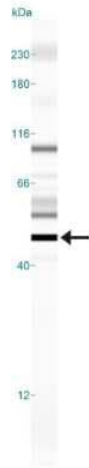
Protein Families: Druggable Genome, Secreted Protein, Transmembrane

Protein Pathways: Cytokine-cytokine receptor interaction, Hematopoietic cell lineage, Jak-STAT signaling pathway

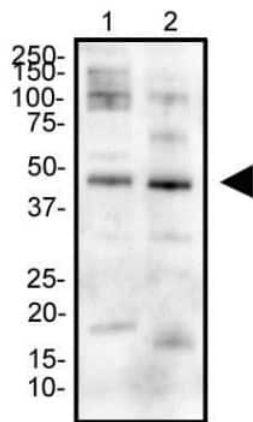
Product images:



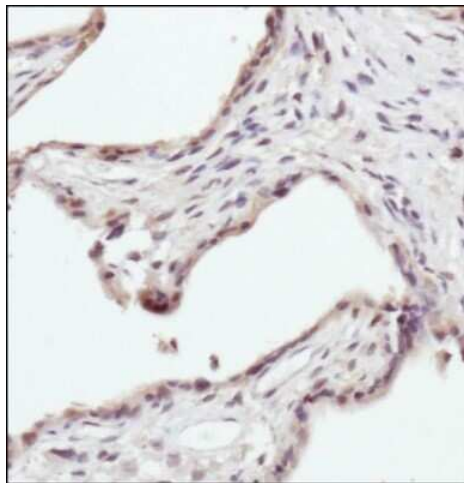
Immunocytochemistry/Immunofluorescence: Erythropoietin R Antibody TA336737 - EPO receptor antibody was tested in HeLa cells with DyLight 488 (green). Nuclei and alpha-tubulin were counterstained with DAPI (blue) and DyLight 550 (red).



Simple Western: Erythropoietin R Antibody TA336737 - Simple Western lane view shows a specific band for EPO Receptor in 0.5 mg/ml of Human Brain lysate. This experiment was performed under reducing conditions using the 12-230 kDa separation system.



Western Blot: Erythropoietin R Antibody TA336737 - Western blot analysis of K562 (left) and SH-SY5Y (right) cell lysate using EPO receptor antibody at a concentration of 2 ug/ml.



Immunohistochemistry-Paraffin: Erythropoietin R Antibody TA336737 - IHC analysis of the EPO receptor in human placenta.