

## Product datasheet for **TA336734**

### TCF7L2 Rabbit Polyclonal Antibody

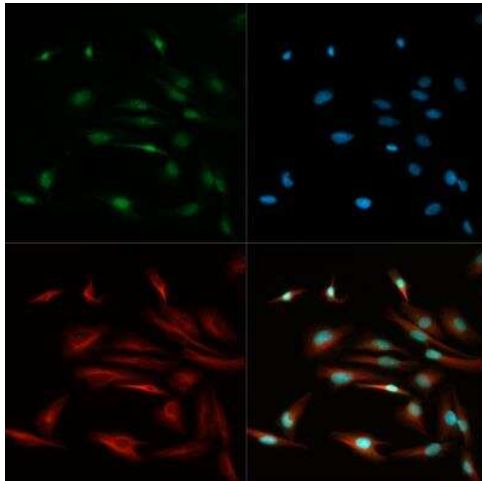
#### Product data:

Product Type:	Primary Antibodies
Applications:	ICC/IF, WB
Recommended Dilution:	Immunocytochemistry/ Immunofluorescence: 1:100, Western Blot: 0.5 ug/ml
Reactivity:	Human
Host:	Rabbit
Clonality:	Polyclonal
Immunogen:	Synthetic peptide made to an internal portion of human TCF7L2 (within residues 150-200). [Swiss-Prot# Q9NQB0]
Formulation:	PBS, 0.05% Sodium Azide. Store at 4C short term. Aliquot and store at -20C long term. Avoid freeze-thaw cycles.
Concentration:	lot specific
Purification:	Immunogen affinity purified
Conjugation:	Unconjugated
Storage:	Store at -20°C as received.
Stability:	Stable for 12 months from date of receipt.
Predicted Protein Size:	55 kDa
Gene Name:	transcription factor 7 like 2
Database Link:	<a href="#">NP_110383</a> <a href="#">Entrez Gene 6934 Human</a> <a href="#">Q9NQB0</a>

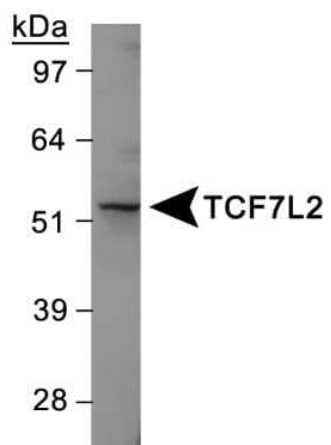


[View online »](#)

<b>Background:</b>	TCF7L2 (transcription factor 7-like 2, also called TCF4) is a key component in WNT signal transduction pathway which is implicated in several fundamental cellular processes such as embryonic development, stem cell maintenance, cellular fate, proliferation, survival, migration, tumour suppression, and oncogenesis. TCF7L2 gene codes for HMG- box transcription factor and through its critical role in WNT/beta-catenin signaling, it plays important role in cellular development as well as growth regulation. TCF7L2 participates in the process of blood glucose homeostasis via its regulatory effects on GLP-1 (glucagon-like peptide 1) and gene variants rs12255372 as well as rs7903146 have been documented to be associated with risk for NIDDM/Type 2 diabetes. TCF7L2 also regulates the transcription of proglucagon gene in enteroendocrine cells and has been suggested to be implicated in obesity also. TCF7L2 has been shown associate with human carcinogenesis specifically with triple negative i.e. ER, PR, HER2 negative or basal-like breast cancers.
<b>Synonyms:</b>	TCF-4; TCF4
<b>Note:</b>	This TCF7L2 antibody is useful for Immunocytochemistry/Immunofluorescence and Western blot, where a band is seen ~55 kDa. In ICC/IF cytoplasmic staining was observed.
<b>Protein Families:</b>	Druggable Genome, Transcription Factors
<b>Protein Pathways:</b>	Acute myeloid leukemia, Adherens junction, Arrhythmogenic right ventricular cardiomyopathy (ARVC), Basal cell carcinoma, Colorectal cancer, Endometrial cancer, Melanogenesis, Pathways in cancer, Prostate cancer, Thyroid cancer, Wnt signaling pathway

**Product images:**

Immunocytochemistry/Immunofluorescence:  
TCF7L2 Antibody TA336734 - TCF7L2 antibody was tested in HeLa cells with DyLight 488 (green). Nuclei and alpha-tubulin were counterstained with DAPI (blue) and Dylight 550 (red).



Western Blot: TCF7L2 Antibody TA336734 - Jurkat cell line.