

## Product datasheet for **TA336732**

### FANCC Rabbit Polyclonal Antibody

#### Product data:

Product Type:	Primary Antibodies
Applications:	ICC/IF, IP, WB
Recommended Dilution:	Immunocytochemistry/ Immunofluorescence: 1:50-1:200, Western Blot: 1:500-1:1000, Immunoprecipitation: 1:10-1:500
Reactivity:	Human
Host:	Rabbit
Clonality:	Polyclonal
Immunogen:	C-terminal human FANCC fusion protein [Swiss-Prot #Q00597].
Formulation:	Store at 4C short term. Aliquot and store at -20C long term. Avoid freeze-thaw cycles.
Concentration:	lot specific
Purification:	Whole antisera
Conjugation:	Unconjugated
Storage:	Store at -20°C as received.
Stability:	Stable for 12 months from date of receipt.
Predicted Protein Size:	63 kDa
Gene Name:	Fanconi anemia complementation group C
Database Link:	<a href="#">NP_000127</a> <a href="#">Entrez Gene 2176 Human</a> <a href="#">Q00597</a>



[View online »](#)

**Background:**

FANCC (Fanconi anemia group C protein) is a DNA repair protein which implicates in post-replication DNA repair or a cell cycle checkpoint function. FANCC also involves in the interstrand DNA cross-link repair as well as the maintenance of chromosome stability/integrity. FANCC participates in the multisubunit FA complex (FANCA, FANCB, FANCC, FANCE, FANCF, FANCG, FANCL/PHF9, FANCM and HSP70) which is not found in FA patients. Upon IFNG induction, FANCC facilitate STAT1 activation via recruitment of STAT1 to IFNGR1. FANCC interacts with ZBTB32 (upon IFNG induction), CDK1, STAT1 etc and FANCC-EIF2AK2 interactions leads to augmented EIF2AK2 activation and cell death. FANCC is expressed ubiquitously and the major form is nuclear while the minor form is cytoplasmic. Defects in FANCC are the cause of Fanconi anemia complementation group C (FANCC), disorder affecting all bone marrow elements and resulting in anemia, leukopenia and thrombopenia.

**Synonyms:**

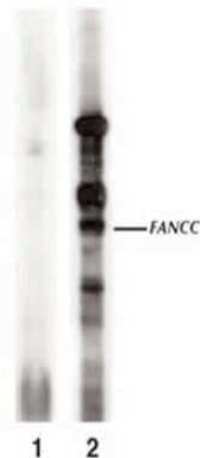
FA3; FAC; FACC

**Note:**

This FANCC antibody is useful for Immunocytochemistry/Immunofluorescence, Immunoprecipitation and Western blot where a band is seen ~63 kDa.

**Protein Families:**

Druggable Genome

**Product images:**

Western Blot: FANCC Antibody TA336732 - Western Blot on cells overexpressing FANCC probed with 1. pre-immune serum and 2.