

Product datasheet for **TA336724**

MCP1 (CCL2) Rabbit Polyclonal Antibody

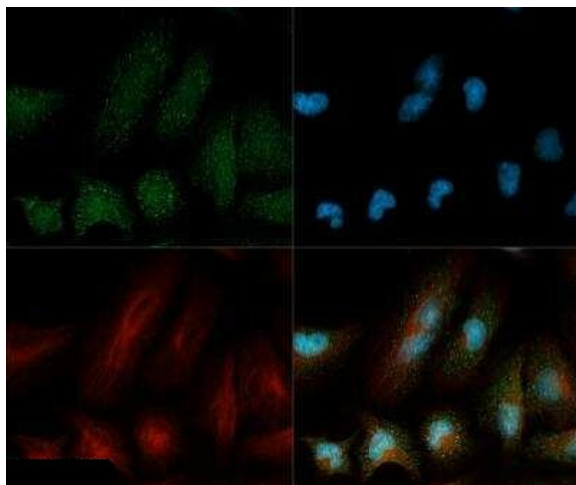
Product data:

Product Type:	Primary Antibodies
Applications:	Block/Neutralize, ICC/IF, IHC, WB
Recommended Dilution:	Western Blot: 1:1000, Block/Neutralize, Immunocytochemistry/ Immunofluorescence: 1:2000, Immunohistochemistry: 1:500-1:1000, Immunohistochemistry-Paraffin: 1:500-1:1000
Reactivity:	Human, Rat
Host:	Rabbit
Clonality:	Polyclonal
Immunogen:	Synthetic peptide made to an internal portion of rat MCP1 (within residues 15-40). [Swiss-Prot# P14844]
Formulation:	PBS, 0.05% Sodium Azide. Store at 4C short term. Aliquot and store at -20C long term. Avoid freeze-thaw cycles.
Concentration:	lot specific
Purification:	Immunogen affinity purified
Conjugation:	Unconjugated
Storage:	Store at -20°C as received.
Stability:	Stable for 12 months from date of receipt.
Predicted Protein Size:	16 kDa
Gene Name:	C-C motif chemokine ligand 2
Database Link:	NP_002973 Entrez Gene 24770 Rat Entrez Gene 6347 Human P13500

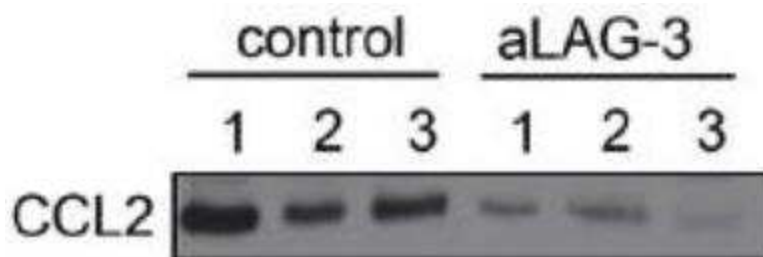


[View online »](#)

Background:	MCP-1 (monocyte chemoattractant protein-1, also called C-C motif chemokine 2 or CCL2) is a secreted protein belonging to intercrine beta (chemokine CC) family and it specifically act as a chemotactic factor to attracts monocytes, CD4+ T cells, NK cells as well as for CCR2 expressing cells, but not neutrophils. Both hematopoietic and non-hematopoietic cells that include monocytes/macrophages, dendritic cells, astrocytes, endothelial cells and fibroblasts express MCP-1, and monocytes/macrophages are the major source of MCP-1 in peripheral blood. Besides, expression at acute inflammation sites, MCP-1 is upregulated in chronic inflammation, including autoimmune disease, atherosclerosis, cancer, and chronic infection. MCP-1 has been implicated in both pro-inflammatory and anti-inflammatory responses, and is a potential intervention point for the treatment of various inflammatory/autoimmune diseases (multiple sclerosis, atherosclerosis, insulin-resistant diabetes, rheumatoid arthritis and lupus nephritis), cancers (breast and prostate cancer) and HIV-1/AIDS.
Synonyms:	GDGF-2; HC11; HSMCR30; MCAF; MCP-1; MCP1; SCYA2; SMC-CF
Note:	This MCP1 antibody is useful for Immunocytochemistry/Immunofluorescence and Western blot, where a band is seen at ~16 kDa. In ICC/IP secretory vesicles staining was observed in HeLa cells. IHC-Fr and B/N applications are reported in research publications with PMIDs 22402584 and 22778093 respectively.
Protein Families:	Druggable Genome, Secreted Protein
Protein Pathways:	Chemokine signaling pathway, Cytokine-cytokine receptor interaction, NOD-like receptor signaling pathway

Product images:

Immunocytochemistry/Immunofluorescence:
CCL2/MCP1 Antibody TA336724 - MCP1 antibody was tested in HeLa cells with Dylight 488 (green). Nuclei and alpha-tubulin were counterstained with DAPI (blue) and Dylight 550 (red).



Western Blot: CCL2/MCP1 Antibody TA336724 - CCL2 expression level was evaluated in control group and aLAG-3 group.