

Product datasheet for **TA336723**

MCP1 (CCL2) Rabbit Polyclonal Antibody

Product data:

Product Type:	Primary Antibodies
Applications:	IF, IHC, WB
Recommended Dilution:	Western Blot: 0.5 ug/ml, ICC/IF (Negative), Immunohistochemistry (Negative)
Reactivity:	Human, Rat
Host:	Rabbit
Clonality:	Polyclonal
Immunogen:	Synthetic peptide made to an internal portion of rat MCP1 (within residues 30-80). [Swiss-Prot# P14844]
Formulation:	PBS, 0.05% Sodium Azide. Store at 4C short term. Aliquot and store at -20C long term. Avoid freeze-thaw cycles.
Concentration:	lot specific
Purification:	Immunogen affinity purified
Conjugation:	Unconjugated
Storage:	Store at -20°C as received.
Stability:	Stable for 12 months from date of receipt.
Predicted Protein Size:	16 kDa
Gene Name:	C-C motif chemokine ligand 2
Database Link:	NP_002973 Entrez Gene 24770 Rat Entrez Gene 6347 Human P13500



[View online »](#)

Background:

MCP-1 (monocyte chemoattractant protein-1, also called C-C motif chemokine 2 or CCL2) is a secreted protein belonging to intercrine beta (chemokine CC) family and it specifically act as a chemotactic factor to attracts monocytes, CD4+ T cells, NK cells as well as for CCR2 expressing cells, but not neutrophils. Both hematopoietic and non-hematopoietic cells that include monocytes/macrophages, dendritic cells, astrocytes, endothelial cells and fibroblasts express MCP-1, and monocytes/macrophages are the major source of MCP-1 in peripheral blood. Besides, expression at acute inflammation sites, MCP-1 is upregulated in chronic inflammation, including autoimmune disease, atherosclerosis, cancer, and chronic infection. MCP-1 has been implicated in both pro-inflammatory and anti-inflammatory responses, and is a potential intervention point for the treatment of various inflammatory/autoimmune diseases (multiple sclerosis, atherosclerosis, insulin-resistant diabetes, rheumatoid arthritis and lupus nephritis), cancers (breast and prostate cancer) and HIV-1/AIDS.

Synonyms:

GDGF-2; HC11; HSMCR30; MCAF; MCP-1; MCP1; SCYA2; SMC-CF

Note:

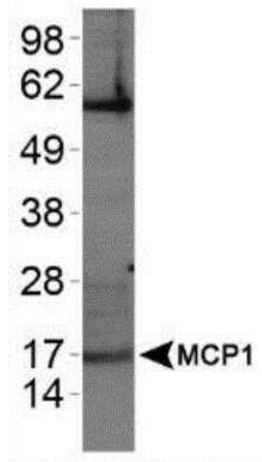
This MCP1 antibody is useful for Western blot, where a band is seen ~16 kDa. This antibody did not work in IHC with mouse tissue or in ICC.

Protein Families:

Druggable Genome, Secreted Protein

Protein Pathways:

Chemokine signaling pathway, Cytokine-cytokine receptor interaction, NOD-like receptor signaling pathway

Product images:

Western Blot: CCL2/MCP1 Antibody TA336723 - Analysis of MCP1 in HeLa whole cell lysates.