

Product datasheet for **TA336717**

LCAT Rabbit Polyclonal Antibody

Product data:

Product Type:	Primary Antibodies
Applications:	ICC/IF, WB
Recommended Dilution:	Western Blot: 1:1000, Immunocytochemistry/ Immunofluorescence: 1:500
Reactivity:	Human, Mouse
Host:	Rabbit
Clonality:	Polyclonal
Immunogen:	Carboxyl-terminal histidine-tagged mouse recombinant LCAT purified from the medium of CHO cells overexpressing mouse LCAT cDNA. [UniProt# P16301]
Formulation:	Aliquot and store at -20C or -80C. Avoid freeze-thaw cycles.
Concentration:	lot specific
Purification:	Whole antisera
Conjugation:	Unconjugated
Storage:	Store at -20°C as received.
Stability:	Stable for 12 months from date of receipt.
Gene Name:	lecithin-cholesterol acyltransferase
Database Link:	NP_000220 Entrez Gene 16816 Mouse Entrez Gene 3931 Human P04180
Background:	Lecithin: cholesterol acyltransferase (LCAT) is the plasma enzyme responsible for most HDL cholesteryl esters in human plasma. In species with cholesteryl ester transfer protein (CETP) it is also responsible for a significant proportion of VLDL and LDL cholesteryl esters. LCAT, through the esterification of cholesterol, plays a role in the reverse cholesterol transport pathway by facilitating the net movement of cholesterol from peripheral tissues back to the liver for excretion. LCAT deficiency results in low levels of plasma HDL, whereas a transgenic overexpression of LCAT results in increased plasma HDL concentrations.
Synonyms:	lecithin-cholesterol acyltransferase



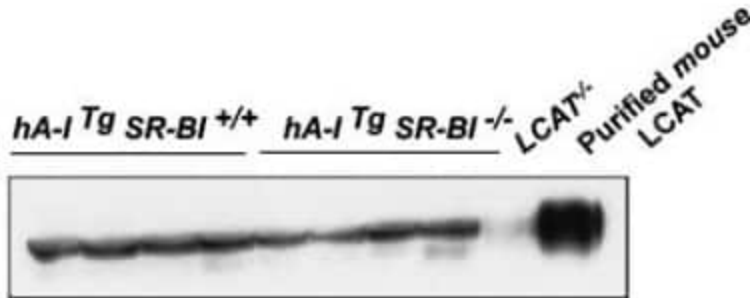
[View online »](#)

Note: This LCAT antibody is useful for Immunocytochemistry/Immunofluorescence and Western blot, where a band is seen at ~62-65 kDa representing LCAT. Also has been shown to immunodeplete LCAT from mouse plasma, suggesting it should work fine for Immunoprecipitation (PMID: 18583707).

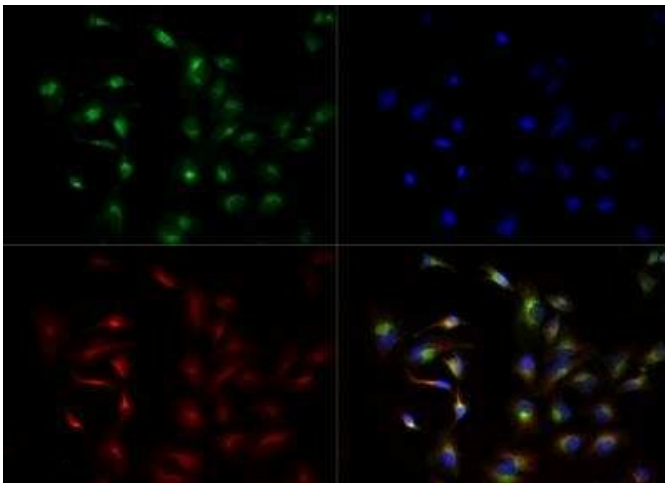
Protein Families: Druggable Genome, Transmembrane

Protein Pathways: Glycerophospholipid metabolism

Product images:



Western Blot: LCAT Antibody TA336717 - Analysis of plasma LCAT protein mass. Plasma samples (0.2ul) from four hA-I Tg mice, four hA-I Tg SR-BI -/- mice, a LCAT-/- mouse, and purified mouse LCAT were fractionated on SDS-PAGE, and LCAT was detected by Western blot analysis using rabbit antiserum against mouse LCAT.



Immunocytochemistry/Immunofluorescence: LCAT Antibody TA336717 - The LCAT antibody was tested at a 1:500 dilution in HeLa cells against Dylight 488 (Green). Alpha-tubulin and nuclei were counterstained against Dylight 550 (Red) and DAPI (Blue).