

Product datasheet for **TA336716**

AGR2 Rabbit Polyclonal Antibody

Product data:

Product Type:	Primary Antibodies
Applications:	ICC/IF, IHC, WB
Recommended Dilution:	Immunohistochemistry: 1:100-1:300, Immunocytochemistry/ Immunofluorescence: 1:100, Western Blot: 1.0 ug/ml, Immunohistochemistry-Paraffin: 1:100-1:300
Reactivity:	Human, Mouse, Bovine
Host:	Rabbit
Clonality:	Polyclonal
Immunogen:	Synthetic peptide made to an N-terminal portion of mouse AGR2 (within residues 1-50). [Swiss-Prot# O88312]
Formulation:	PBS, 0.05% Sodium Azide. Store at 4C short term. Aliquot and store at -20C long term. Avoid freeze-thaw cycles.
Concentration:	lot specific
Purification:	Immunogen affinity purified
Conjugation:	Unconjugated
Storage:	Store at -20°C as received.
Stability:	Stable for 12 months from date of receipt.
Predicted Protein Size:	20 kDa
Gene Name:	anterior gradient 2, protein disulphide isomerase family member
Database Link:	NP_006399 Entrez Gene 23795 Mouse Entrez Gene 10551 Human O95994



[View online »](#)

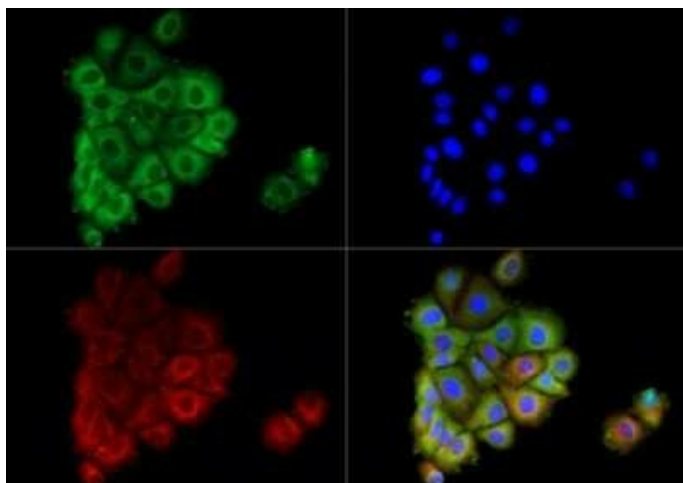
Background: Originally discovered in *Xenopus laevis* wherein it plays a role during early neural development, AGR2 (anterior gradient protein 2 homolog) is now known as a member of protein disulfide isomerase (PDI) family of ER-resident proteins which is expressed in a variety of normal as well as transformed epithelial tissues. AGR2 has been implicated in the folding of proteins as a chaperone protein. It interacts with LYPD3, DAG1 (alphaDAG1) and MUC2 (disulfide-linked), and is essential for MUC2 translation as well as secretion. AGR2 plays a key role in the production of mucus by intestinal cells and has also been suggested to be a proto-oncogene that may involve in cellular migration, differentiation and growth. Differential expression of AGR2 was first found in estrogen receptor (ER)-positive breast cancer cell lines and subsequently, elevated AGR2 levels have been seen in subsets of other cancers also wherein its upregulation enhances classical hallmarks of cancer such as metastasis, invasion, colony formation, and proliferation.

Synonyms: AG2; GOB-4; HAG-2; HEL-S-116; PDIA17; XAG-2

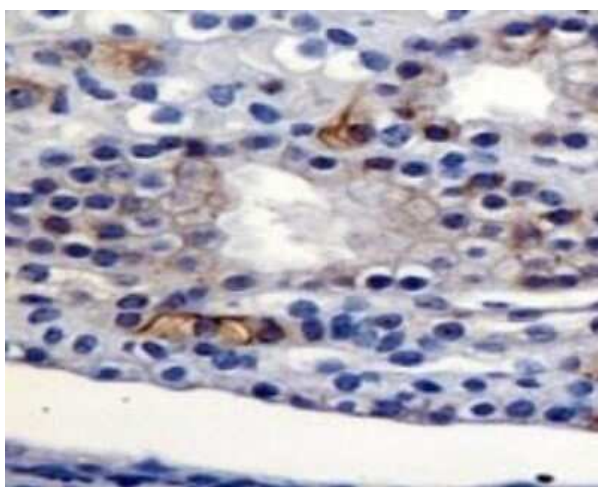
Note: This AGR2 antibody is useful for Immunocytochemistry/Immunofluorescence, Immunohistochemistry paraffin embedded sections, and Western blot analysis where a band can be seen at ~19.9 kDa. In ICC/IF cytoplasmic staining is observed.

Protein Families: Secreted Protein

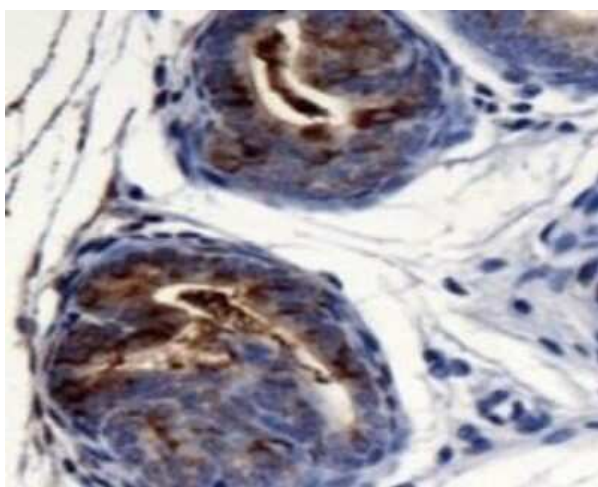
Product images:



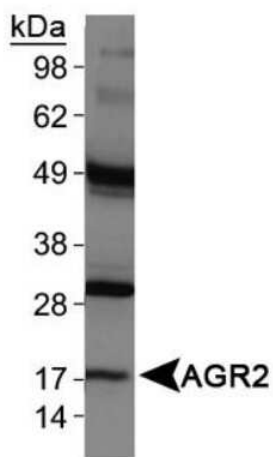
Immunocytochemistry/Immunofluorescence: AG-2/AGR2 Antibody - BSA Free TA336716 - AGR2 antibody was tested in MCF7 cells with DyLight 488 (green). Nuclei and alpha-tubulin were counterstained with DAPI (blue) and DyLight 550 (red).



Immunohistochemistry: AG-2/AGR2 Antibody - BSA Free TA336716 - Detection of AGR2 in mouse kidney.



Immunohistochemistry: AG-2/AGR2 Antibody - BSA Free TA336716 - Detection of AGR2 in mouse prostate.



Western Blot: AG-2/AGR2 Antibody - BSA Free TA336716 - Human stomach lysate.