

Product datasheet for **TA336715**

AGR2 Rabbit Polyclonal Antibody

Product data:

Product Type:	Primary Antibodies
Applications:	IF, IHC
Recommended Dilution:	Immunohistochemistry-Paraffin: 1:100-1:300, ICC/IF (Negative), Immunohistochemistry: 1:100-1:300
Reactivity:	Human, Mouse
Host:	Rabbit
Clonality:	Polyclonal
Immunogen:	Synthetic peptide made to an internal portion of human AGR2 (within residues 50-100). [Swiss-Prot# O95994]
Formulation:	PBS, 0.05% Sodium Azide. Store at 4C short term. Aliquot and store at -20C long term. Avoid freeze-thaw cycles.
Concentration:	lot specific
Purification:	Immunogen affinity purified
Conjugation:	Unconjugated
Storage:	Store at -20°C as received.
Stability:	Stable for 12 months from date of receipt.
Gene Name:	anterior gradient 2, protein disulphide isomerase family member
Database Link:	NP_006399 Entrez Gene 23795 Mouse Entrez Gene 10551 Human O95994



[View online »](#)

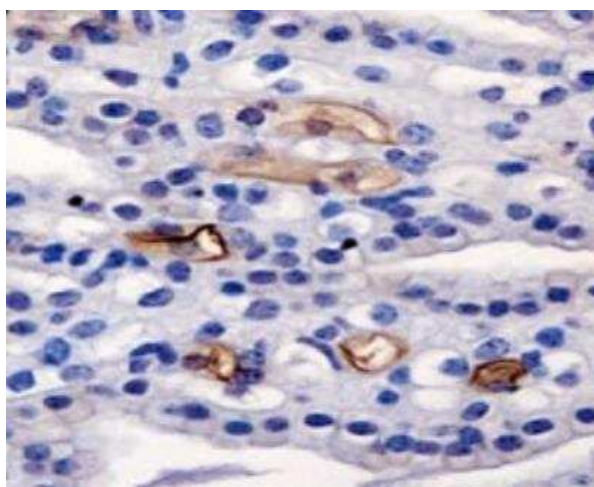
Background: Originally discovered in *Xenopus laevis* wherein it plays a role during early neural development, AGR2 (anterior gradient protein 2 homolog) is now known as a member of protein disulfide isomerase (PDI) family of ER-resident proteins which is expressed in a variety of normal as well as transformed epithelial tissues. AGR2 has been implicated in the folding of proteins as a chaperone protein. It interacts with LYPD3, DAG1 (alphaDAG1) and MUC2 (disulfide-linked), and is essential for MUC2 translation as well as secretion. AGR2 plays a key role in the production of mucus by intestinal cells and has also been suggested to be a proto-oncogene that may involve in cellular migration, differentiation and growth. Differential expression of AGR2 was first found in estrogen receptor (ER)-positive breast cancer cell lines and subsequently, elevated AGR2 levels have been seen in subsets of other cancers also wherein its upregulation enhances classical hallmarks of cancer such as metastasis, invasion, colony formation, and proliferation.

Synonyms: AG2; GOB-4; HAG-2; HEL-S-116; PDIA17; XAG-2

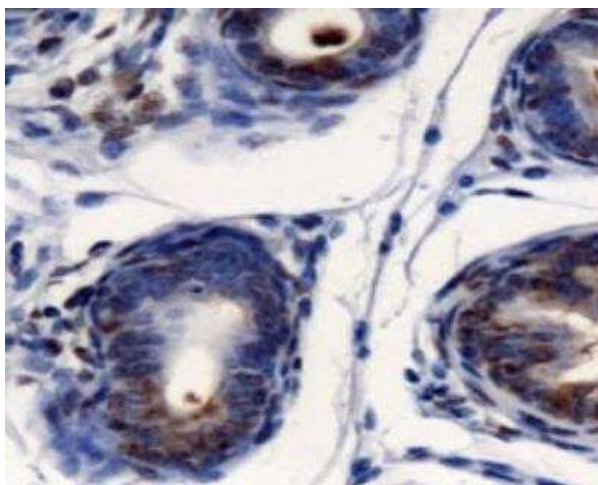
Note: This AGR2 antibody is useful for Immunohistochemistry paraffin embedded sections. It is not applicable for Immunocytochemistry/Immunofluorescence.

Protein Families: Secreted Protein

Product images:



Immunohistochemistry: AG-2 Antibody TA336715
- Detection of AGR2 in mouse kidney.



Immunohistochemistry-Paraffin: AG-2 Antibody TA336715 - Detection of AGR2 in mouse prostate.