

Product datasheet for **TA336714**

Peripherin (PRPH) Chicken Polyclonal Antibody

Product data:

Product Type:	Primary Antibodies
Applications:	IF
Recommended Dilution:	WB: 1:10000, IF: 1:2000
Reactivity:	Rat
Host:	Chicken
Isotype:	IgY
Clonality:	Polyclonal
Immunogen:	Rat Peripherin [UniProt# P21807]
Formulation:	PBS, 0.03% Sodium Azide. Store at 4C short term. Aliquot and store at -20C long term. Avoid freeze-thaw cycles.
Concentration:	lot specific
Purification:	Ammonium sulfate precipitation
Conjugation:	Unconjugated
Storage:	Store at -20°C as received.
Stability:	Stable for 12 months from date of receipt.
Predicted Protein Size:	57 kDa
Gene Name:	peripherin
Database Link:	NP_006253 Entrez Gene 24688 Rat P41219



[View online »](#)

Background:

Peripherin (PRPH) is a 57kD type III neuronal intermediate filament (NIF) protein which is predominantly expressed in neurons of PNS and in certain CNS neurons specifically from brain stem/spinal cord which generally project toward peripheral structures. Inside developing neurons, PRPH is expressed abundantly in the growth cones and is required for axonal outgrowth as well as maintenance or regeneration. In mature neurons, together with other NIFs, PRPH constitutes a shape-maintaining IF network. Besides its crucial role in development of nervous system, PRPH can also be highly relevant to pathogenesis of neurodegenerative disorder. PRPH expression is induced in CNS neurons (wherein it is not expressed normally) upon brain injury, and factors such as LIF, IL-6 etc and PRPH molecules form aggregates in neurons. Synaptic plasticity is markedly altered in PRPH transgenic mice (Per mice) and up-regulation of PRPH expression is implicated in some pathophysiological conditions, such as cerebral ischemia and seizure, and some cognitive disorders. In ALS patients, PRPH together with neuronal IFs are detected in the majority of abnormal IF inclusion bodies in mature or aging motor neurons.

Synonyms:

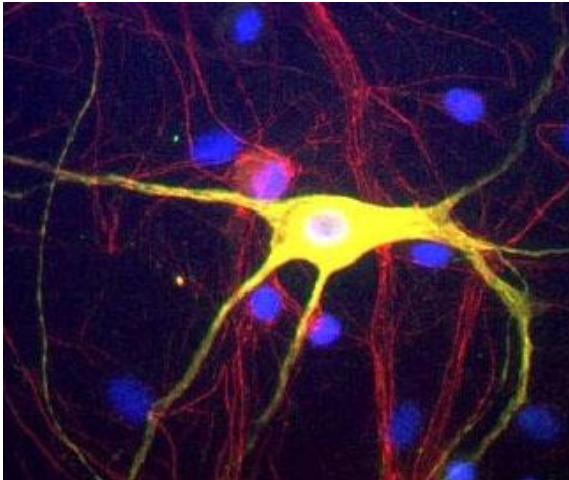
NEF4; PRPH1

Note:

This Peripherin antibody is useful for Immunocytochemistry/Immunofluorescence and Western blot, where a band can be seen at ~57 kDa.

Protein Pathways:

Amyotrophic lateral sclerosis (ALS)

Product images:

Immunocytochemistry/Immunofluorescence:
Peripherin Antibody TA336714 - shows rat mixed neuron/glia cultures stained with TA336714, our chicken polyclonal antibody to peripherin (green channel) and rabbit antibody to the neurofilament subunit alpha-inte