

Product datasheet for **TA336713**

Neurofilament (NEFL) Chicken Polyclonal Antibody

Product data:

Product Type:	Primary Antibodies
Applications:	IF, WB
Recommended Dilution:	WB: 1:10000, IF: 1:5000
Reactivity:	Rat
Host:	Chicken
Isotype:	IgY
Clonality:	Polyclonal
Immunogen:	Neurofilament Light protein prepared from bovine spinal cord [UniProt# P02548]
Formulation:	PBS, 0.03% Sodium Azide. Store at 4C short term. Aliquot and store at -20C long term. Avoid freeze-thaw cycles.
Concentration:	lot specific
Purification:	Ammonium sulfate precipitation
Conjugation:	Unconjugated
Storage:	Store at -20°C as received.
Stability:	Stable for 12 months from date of receipt.
Predicted Protein Size:	68 kDa
Gene Name:	neurofilament, light polypeptide
Database Link:	NP_006149 Entrez Gene 83613 Rat P07196



[View online »](#)

Background:

Neuronal intermediate filaments or neurofilaments are found specifically in neurons where they play a key role in maintaining neuronal morphology as well as in regenerating myelinated axons. Neurofilaments contain three subunits: a light polypeptide (NEFL/NFL), a medium polypeptide (NEFM/NFM), and a heavy polypeptide (NEFH/NFH), with molecular weights of 68, 160, and 212 kD respectively. 68kD Neurofilament Light (NEFL) is the most abundant of three neurofilament proteins and, like other nonepithelial intermediate filament proteins, it can form homopolymeric 10-nm filaments. NEFL forms the backbone of neurofilament and perturbations in its expression leads to motor neuron diseases, such as Charcot-Marie-Tooth disease, type 2E (CMT2E). In addition to its influence on the nervous system, NEFL has been shown to act as a tumor suppressor and has been linked to carcinogenesis/metastasis of several malignancies including breast, prostate, lung, colon, and bladder cancer.

Synonyms:

CMT1F; CMT2E; NF-L; NF68; NFL; PPP1R110

Note:

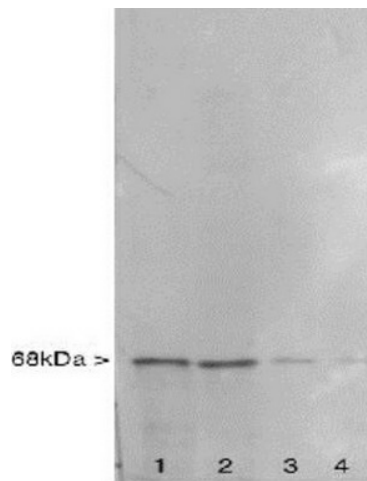
This 68kDa Neurofilament Light antibody is useful for Immunocytochemistry/Immunofluorescence and Western blot, where a band can be seen at ~68 kDa.

Protein Families:

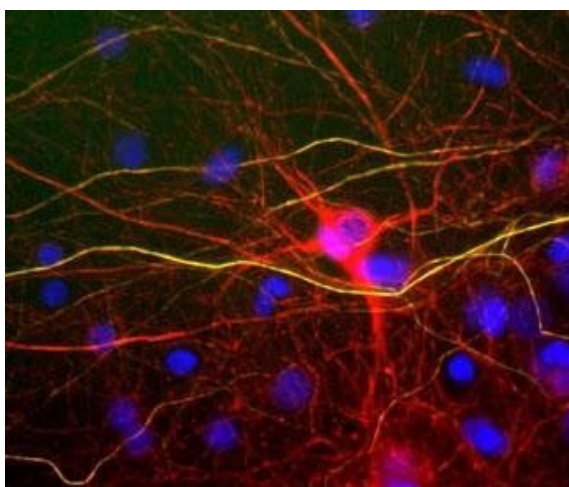
Druggable Genome, ES Cell Differentiation/IPS

Protein Pathways:

Amyotrophic lateral sclerosis (ALS)

Product images:

Western Blot: 68kDa Neurofilament Light Antibody TA336713 - Western blots of whole protein extracts of rat spinal cord (Lanes 1), brain stem (Lanes 2), cerebellum (Lanes 3) and cerebral cortex (Lanes 4). Neurofilaments are concentrated in large projecti



Immunocytochemistry/Immunofluorescence:
68kDa Neurofilament Light Antibody TA336713 -
View of mixed neuron/glia cultures stained with
TA336713 (red) and rabbit antibody to
phosphorylated NF-H (NB300-135, green). The
NF-L protein is assembled into neur