

Product datasheet for **TA336711**

NFH (NEFH) Rabbit Polyclonal Antibody

Product data:

Product Type:	Primary Antibodies
Applications:	IF, WB
Recommended Dilution:	WB: 1:10000, ELISA: 1:100-1:2000, IF: 1:1000
Reactivity:	Rat, Chicken
Host:	Rabbit
Clonality:	Polyclonal
Immunogen:	Purified rat Neurofilament Heavy construct containing most of the tandem KSP repeats [UniProt# P16884]
Formulation:	Store at 4C short term. Aliquot and store at -20C long term. Avoid freeze-thaw cycles.
Concentration:	lot specific
Purification:	Whole antisera
Conjugation:	Unconjugated
Storage:	Store at -20°C as received.
Stability:	Stable for 12 months from date of receipt.
Predicted Protein Size:	200 kDa
Gene Name:	neurofilament, heavy polypeptide
Database Link:	NP_066554 Entrez Gene 24587 Rat P12036



[View online »](#)

Background:

Neuronal intermediate filaments (NIF) are found specifically on neurons where they play key role in maintaining neuronal morphology as well as in regenerating myelinated axons. NIF contain three subunits: a light polypeptide (NEFL/NFL), a medium polypeptide (NEFM/NFM), and a heavy polypeptide (NEFH/NFH), with molecular weights of 68, 160, and 212 kD respectively. 200kD neurofilament heavy (NEFH) is one of the major components of neuronal cytoskeleton NIF and NEFH gene was originally proposed as a DNA marker for presymptomatic diagnosis in neurofibromatosis type 2 (NF2). NEFH facilitate interactions between NIF and brain mitochondria with binding efficiency dependent upon mitochondrial membranes potential. NEFH and beta-catenin are constituents in postsynaptic density (PSD) in CNS and NEFH is essential for maintaining normal cell integrity. Diminished NEFH levels are seen in certain cancers including human autonomic nerve tumors or central neurocytomas, prostate cancer, clear-cell epithelioid tumor and small cell lung carcinoma. Fibroblasts overexpressing NEFH are distorted, multinucleated, and possess inclusions, typical changes seen in neuropathies, and defects in NEFH are linked to susceptibility to ALS.

Synonyms:

NFH

Note:

This 200kDa Neurofilament Heavy antibody is useful for ELISA, Immunocytochemistry/Immunofluorescence and Western Blot.

Protein Families:

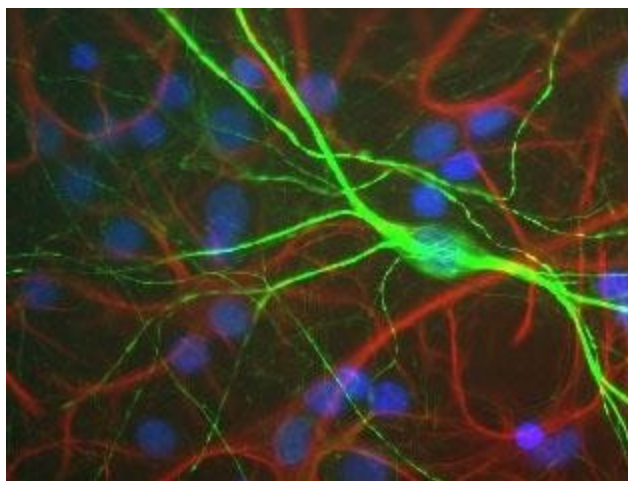
Druggable Genome

Protein Pathways:

Amyotrophic lateral sclerosis (ALS)

Product images:

Western Blot: 200kDa Neurofilament Heavy Antibody TA336711 - Blot of rat spinal cord extract blotted with TA336711. A major band running at 200kDa is NF-H, the major neurofilament subunit protein. A minor band at about 160kDa is the non-phosphorylated d



Immunocytochemistry/Immunofluorescence:
200kDa Neurofilament Heavy Antibody TA336711
- Shows mixed neuron/glia rat brain cultures
stained with TA336711 (green) and chicken
polyclonal antibody to Glial Fibrillary Acidic
Protein (GFAP) NBP1-05198 (red).