

Product datasheet for **TA336709**

NFH (NEFH) Mouse Monoclonal Antibody [Clone ID: AH1]

Product data:

Product Type:	Primary Antibodies
Clone Name:	AH1
Applications:	IF, WB
Recommend Dilution:	WB: 1:10000, IF: 1:1000
Reactivity:	Bovine, Chicken, Human, Mammalian, Mouse, Rat
Host:	Mouse
Isotype:	IgG1, kappa
Clonality:	Monoclonal
Immunogen:	Native Neurofilament Heavy protein purified from bovine spinal cord
Formulation:	Preservative: 0.05% Sodium Azide. Aliquot and store at -20C or -80C. Avoid freeze-thaw cycles.
Concentration:	lot specific
Purification:	Ascites
Storage:	Store at -20°C as received.
Stability:	Stable for 12 months from date of receipt.
Predicted Protein Size:	200 kDa
Gene Name:	neurofilament, heavy polypeptide
Database Link:	NP_066554 Entrez Gene 24587 RatEntrez Gene 380684 MouseEntrez Gene 4744 Human



[View online »](#)

Background:

Neuronal intermediate filaments (NIF) are found specifically on neurons where they play key role in maintaining neuronal morphology as well as in regenerating myelinated axons. NIF contain three subunits: a light polypeptide (NEFL/NFL), a medium polypeptide (NEFM/NFM), and a heavy polypeptide (NEFH/NFH), with molecular weights of 68, 160, and 212 kD respectively. 200kD neurofilament heavy (NEFH) is one of the major components of neuronal cytoskeleton NIF and NEFH gene was originally proposed as a DNA marker for presymptomatic diagnosis in neurofibromatosis type 2 (NF2). NEHF facilitate interactions between NIF and brain mitochondria with binding efficiency dependent upon mitochondrial membranes potential. NEFH and beta-catenin are constituents in postsynaptic density (PSD) in CNS and NEFH is essential for maintaining normal cell integrity. Diminished NEFH levels are seen in certain cancers including human autonomic nerve tumors or central neurocytomas, prostate cancer, clear-cell epithelioid tumor and small cell lung carcinoma. Fibroblasts overexpressing NEFH are distorted, multinucleated, and possess inclusions, typical changes seen in neuropathies, and defects in NEFH are linked to susceptibility to ALS.

Synonyms:

NFH

Note:

This 200kDa Neurofilament Heavy antibody is useful for Immunocytochemistry/Immunofluorescence and Western Blot.

Protein Families:

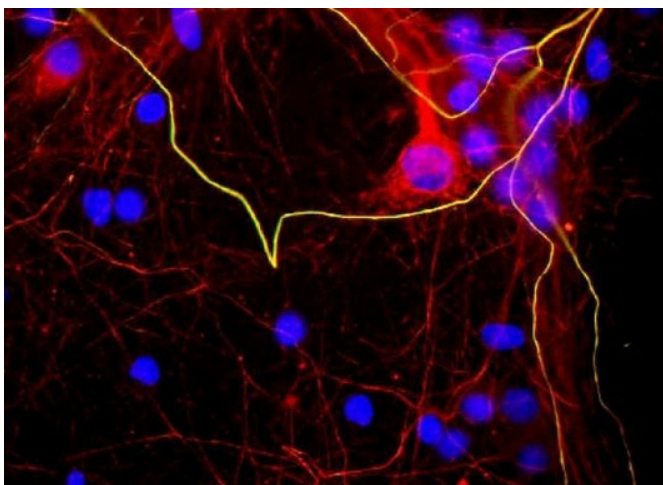
Druggable Genome

Protein Pathways:

Amyotrophic lateral sclerosis (ALS)

Product images:

Western Blot: 200kDa Neurofilament Heavy Antibody (AH1) TA336709 - Strip blots of crude rat spinal cord extract stained with three different antibodies to phosphorylated NF-H, NB300-136 (lane 1), TA336709 (Lane 2) and NBP1-05210 (lane 3). All three anti



Immunocytochemistry/Immunofluorescence:
200kDa Neurofilament Heavy Antibody (AH1)
TA336709 - Mixed neuron/glia cultures stained
with TA336709 (green) and also stained with
rabbit polyclonal antibody to neurofilament NF-L
NB300-131 (red). The NF-L antib