

## Product datasheet for **TA336705**

### ATF3 Rabbit Polyclonal Antibody

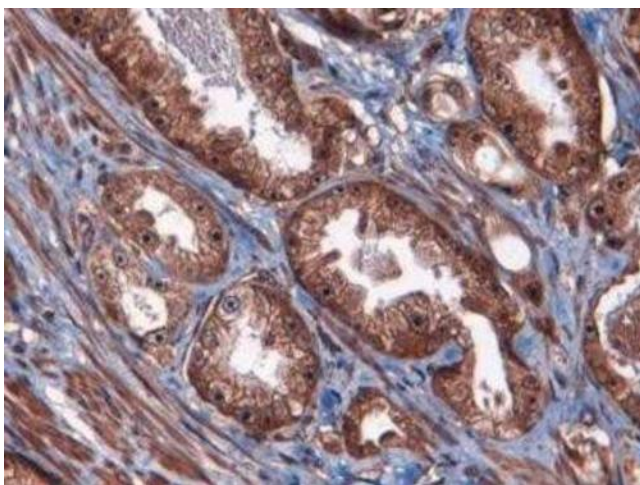
#### Product data:

Product Type:	Primary Antibodies
Applications:	ELISA, IHC, WB
Recommended Dilution:	ELISA: 1:100-1:2000, Western Blot: 1:200, Immunohistochemistry-Paraffin: 5 ug/ml, Immunohistochemistry: 5 ug/ml
Reactivity:	Human, Mouse, Rat, Mammalian
Host:	Rabbit
Clonality:	Polyclonal
Immunogen:	A synthetic peptide corresponding to a region of human ATF3 (within residues 100-150). [UniProt# P18847]
Formulation:	PBS, 0.05% Sodium Azide. Store at 4C short term. Aliquot and store at -20C long term. Avoid freeze-thaw cycles.
Concentration:	lot specific
Purification:	Immunogen affinity purified
Conjugation:	Unconjugated
Storage:	Store at -20°C as received.
Stability:	Stable for 12 months from date of receipt.
Predicted Protein Size:	17 kDa
Gene Name:	activating transcription factor 3
Database Link:	<a href="#">NP_004015</a> <a href="#">Entrez Gene 11910 Mouse</a> <a href="#">Entrez Gene 25389 Rat</a> <a href="#">Entrez Gene 467 Human</a> <a href="#">P18847</a>

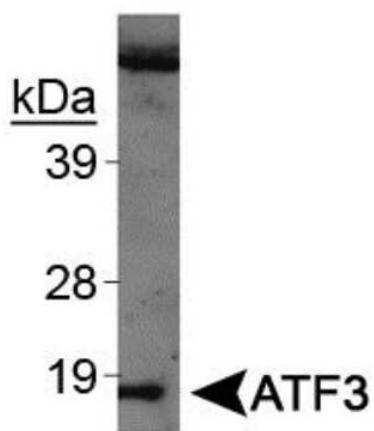


[View online »](#)

- Background:** ATF3 (activating transcription factor 3) belongs to ATF/CREB family of transcription factors and it binds Cre 5'-GTGACGT[AC][AG]-3' a sequence which is present in several cellular as well as viral promoters. ATF3 exerts its repressive effects on transcription from promoters with ATF sites by stabilizing the binding of inhibitory cofactors of target promoters. Expressed by various cell types with nuclear localization, ATF3 expression gets upregulated by a variety of extracellular stimuli such as cytokines, chemokines, growth factors, hormones, hypoxia, DNA damage, ER stress and starvation. Originally considered a stress-response gene, ATF3 now has emerged as a factor implicated in general adaptive responses such as environmental, emotional and nutritional alterations. Its disorders have been associated with inflammatory and immune diseases as well as cancer, and unlike other ATF/CREB family members, ATF3 is emerging as a factor involved in protection against malignant cells and invading pathogens.
- Synonyms:** activating transcription factor 3; ATF3deltaZip2; ATF3deltaZip2c; ATF3deltaZip3; OTTHUMP00000034887; OTTHUMP00000034890
- Note:** This ATF3 antibody is useful for Western Blot, ELISA and Immunohistochemistry paraffin embedded sections.
- Protein Families:** Transcription Factors

**Product images:**

Immunohistochemistry: ATF3 Antibody TA336705  
- Analysis of ATF3 in human prostate using Fast Red with hematoxylin counterstain.



Western Blot: ATF3 Antibody TA336705 - Western blot analysis of ATF3 on UV treated NIH/3T3 cell extracts using TA336705.