

Product datasheet for **TA336699**

Macrophage Scavenger Receptor I (MSR1) Rabbit Polyclonal Antibody

Product data:

Product Type:	Primary Antibodies
Applications:	FC, ICC/IF, IHC, WB
Recommended Dilution:	Proximity Ligation Assay, Immunohistochemistry, Western Blot: 0.5 ug/ml, Immunohistochemistry-Paraffin, Immunocytochemistry/ Immunofluorescence: 1:50-1:200, Immunohistochemistry-Frozen, Flow Cytometry: 2-5 ug/million cells
Reactivity:	Human, Mouse
Host:	Rabbit
Clonality:	Polyclonal
Immunogen:	Synthetic peptide made to an internal portion of human Macrophage Scavenger Receptor I (within residues 400-450). [Swiss-Prot# P21757]
Formulation:	PBS, 0.05% Sodium Azide. Store at 4C short term. Aliquot and store at -20C long term. Avoid freeze-thaw cycles.
Concentration:	lot specific
Purification:	Immunogen affinity purified
Conjugation:	Unconjugated
Storage:	Store at -20°C as received.
Stability:	Stable for 12 months from date of receipt.
Predicted Protein Size:	50 kDa
Gene Name:	macrophage scavenger receptor 1
Database Link:	NP_619729 Entrez Gene 20288 Mouse Entrez Gene 4481 Human P21757



[View online »](#)

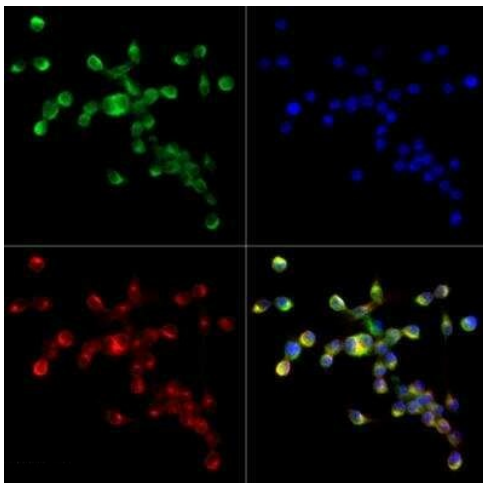
Background: Macrophage Scavenger Receptor I (MSR1, also called CD204 or scavenger receptor A) belongs to scavenger receptor A family and represents phagocytic pattern-recognition receptors (PRRs) expressed predominantly on macrophages and dendritic cells. MSR1 is a single-pass type II membrane glycoprotein capable of binding to a wide range of polyanionic ligands (e.g., modified low density lipoproteins, pathogen-derived molecules), and is implicated in the pathologic deposition of cholesterol in arterial walls during atherogenesis, innate immune response as well as Alzheimer's disease. MSR1 mediates the endocytosis of a diverse group of macromolecules including modified LDLs, and scavenger receptors MSR1, CD36 and LOX-1 are three main receptors for oxidized LDL on macrophage membrane wherein MSR1/CD36 account for more than 9/10 of the lipid accumulation in macrophages exposed to oxidized LDL. Defects in MSR1 have also been linked to prostate cancer and Barrett esophagus (BE).

Synonyms: CD204; phSR1; phSR2; SCARA1; SR-A; SRA

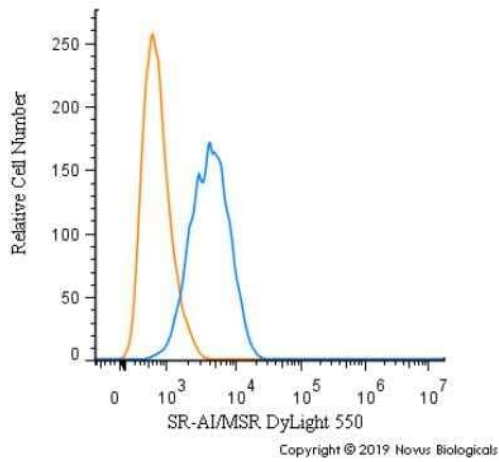
Note: This Macrophage Scavenger Receptor I antibody is useful for Immunocytochemistry/Immunofluorescence and Western blot, where a band is seen ~50 kDa.

Protein Families: Druggable Genome, Transmembrane

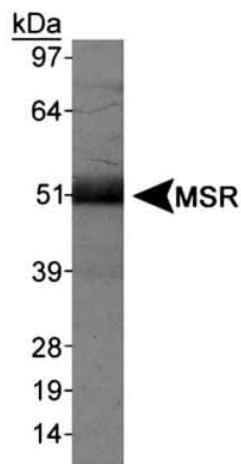
Product images:



Immunocytochemistry/Immunofluorescence: SR-AI/MSR Antibody TA336699 - The MSR antibody was tested in Raw cells at a 1:250 dilution against DyLight 488 (Green). Alpha-tubulin and nuclei were counterstained against DyLight 550 (Red) and DAPI (Blue), respectively.



Flow Cytometry: SR-AI/MSR Antibody TA336699 - A surface stain was performed on Raw264.7 cells with SR-AI/MSR Antibody TA336699R (blue) and a matched isotype control (orange). Cells were incubated in an antibody dilution of 5 ug/mL for 20 minutes at room temperature. Both antibodies were conjugated to DyLight 550.



Western Blot: SR-AI/MSR Antibody TA336699 - Detection of Macrophage Scavenger Receptor I (MSR1) protein in the lysate of human liver.