

Product datasheet for **TA336698**

Beclin 1 (BECN1) Mouse Monoclonal Antibody [Clone ID: 9B6]

Product data:

Product Type:	Primary Antibodies
Clone Name:	9B6
Applications:	WB
Recommended Dilution:	WB: 1:1000, IHC: 1:50- 1:100
Reactivity:	Human, Mouse, Rat, Bovine, Chicken, Equine, Porcine
Host:	Mouse
Clonality:	Monoclonal
Immunogen:	Full length human Beclin 1 protein [Swiss-Prot# Q14457]
Formulation:	Preservative: 0.05% Sodium Azide. Aliquot and store at -20C or -80C. Avoid freeze-thaw cycles.
Concentration:	lot specific
Purification:	Ascites
Conjugation:	Unconjugated
Storage:	Store at -20°C as received.
Stability:	Stable for 12 months from date of receipt.
Predicted Protein Size:	52 kDa
Gene Name:	beclin 1
Database Link:	NP_003757 Entrez Gene 56208 MouseEntrez Gene 114558 RatEntrez Gene 8678 Human Q14457



[View online »](#)

Background:

Beclin 1 is the first identified mammalian gene to mediate autophagy and also has tumor suppressor and antiviral function. Autophagy, a process of bulk protein degradation through an autophagosomic-lysosomal pathway, is important for differentiation, survival during nutrient deprivation, and normal growth control, and is often defective in tumor cells. Beclin 1 was originally isolated in a yeast two hybrid screen to identify Bcl-2-binding partners and maps to a tumor susceptibility locus on human chromosome 17q21 that is frequently monoallelically deleted in human breast, ovarian and prostate cancer. Beclin 1 encodes an evolutionarily conserved 60 kDa coiled coil protein that is expressed in human muscle, epithelial cells and neurons. In gene transfer studies, beclin 1 promotes nutrient deprivation-induced autophagy, inhibits mammary tumorigenesis, and inhibits viral replication. Expression of the Beclin 1 protein is frequently decreased in malignant breast epithelial cells. Based upon these observations, it is speculated that beclin 1 may work through induction of autophagy to negatively regulate tumorigenesis and to control viral infections. Beclin 1 may also play a role in other biological processes in which autophagy is important such as cell differentiation and nutritional stress responses.

Synonyms:

ATG6; beclin1; VPS30

Note:

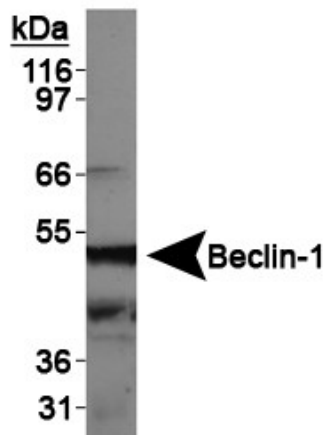
This Beclin 1 antibody is useful for Immunohistochemistry and Western blot, where a band is seen ~52 kDa.

Protein Families:

Druggable Genome

Protein Pathways:

Regulation of autophagy

Product images:

Western Blot: Beclin 1 Antibody (9B6) TA336698 - HeLa whole cell extract.