

## Product datasheet for **TA336695**

### **TAX1BP1 Rabbit Polyclonal Antibody**

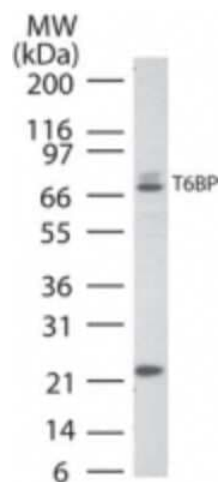
#### **Product data:**

<b>Product Type:</b>	Primary Antibodies
<b>Applications:</b>	WB
<b>Recommended Dilution:</b>	Western Blot: 2 ug/ml
<b>Reactivity:</b>	Human
<b>Host:</b>	Rabbit
<b>Clonality:</b>	Polyclonal
<b>Immunogen:</b>	This antibody was developed against amino acids 718-735 (CSEQFPPDYDQVFERHV) of human TRAF6BP (TAX1BP). The sequence used is 94% homologous in mouse.
<b>Formulation:</b>	PBS containing 0.05% BSA, 0.05% Sodium Azide. Store at 4C short term. Aliquot and store at -20C long term. Avoid freeze-thaw cycles.
<b>Concentration:</b>	lot specific
<b>Purification:</b>	Protein G purified
<b>Conjugation:</b>	Unconjugated
<b>Storage:</b>	Store at -20°C as received.
<b>Stability:</b>	Stable for 12 months from date of receipt.
<b>Gene Name:</b>	Tax1 binding protein 1
<b>Database Link:</b>	<a href="#">NP_006015</a> <a href="#">Entrez Gene 8887 Human</a> <a href="#">Q86VP1</a>
<b>Background:</b>	A TRAF-interacting protein that specifically associates with TRAF6. T6BP shares an overall 50% identity and 59% similarity to a recently identified chicken protein MDP62, which has been implicated in promoting neurite outgrowth. T6BP-TRAF6 complex formation is dependent on the presence of the IL-1 receptor-associated kinase (IRAK).
<b>Synonyms:</b>	CALCOCO3; T6BP; TXBP151
<b>Note:</b>	In Western Blot detects a band of approximately 86 kDa.
<b>Protein Families:</b>	Druggable Genome



[View online »](#)

## Product images:



Western Blot: TAX1BP1 Antibody TA336695 -  
HeLa cell lysate using TAX1BP1 antibody at 3  
ug/ml.