

Product datasheet for **TA336694**

SMAD1 Rabbit Polyclonal Antibody

Product data:

Product Type:	Primary Antibodies
Applications:	WB
Recommended Dilution:	Western Blot: 0.5 - 2 ug/ml
Reactivity:	Human, Mouse, Rat
Host:	Rabbit
Clonality:	Polyclonal
Immunogen:	This antibody was raised against two synthetic peptides corresponding to amino acids 18-32 (LGWKQGDDEEKWAEK) and amino acids 315-329 (SNVNRNSTIENTRRH) of human SMAD1. GenBank Accession No. AAP36050.1. They are 100% conserved or highly conserved between
Formulation:	PBS containing 0.05% BSA, 0.05% Sodium Azide. Store at 4C short term. Aliquot and store at -20C long term. Avoid freeze-thaw cycles.
Concentration:	lot specific
Purification:	Protein G purified
Conjugation:	Unconjugated
Storage:	Store at -20°C as received.
Stability:	Stable for 12 months from date of receipt.
Gene Name:	SMAD family member 1
Database Link:	NP_005891 Entrez Gene 17125 Mouse Entrez Gene 25671 Rat Entrez Gene 4086 Human Q15797
Background:	SMADs are members of the MAD-related family of molecules. MAD-related proteins are a family of intracellular proteins that are essential components in the signaling pathways of the serine/threonine kinase receptors of the transforming growth factor beta superfamily (1). SMADs can be divided into receptor-regulated SMADs (R-SMADs: SMAD1, 2, 5, 8 and 9), common-mediator SMAD (co-SMAD: SMAD4), and inhibitory SMADs (I-SMADs: SMAD6 and 7). SMAD1, 5, 8 and 9 have high degrees of homology and antibodies are available that recognize sequences common to all of them. SMAD8 and SMAD9 are typically used as alternate names for one another in the literature.



[View online »](#)

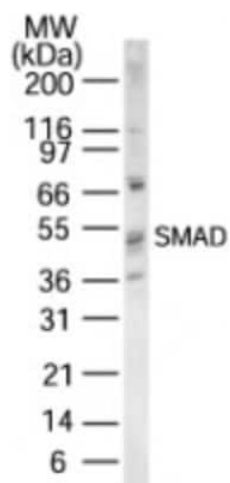
Synonyms: BSP-1; BSP1; JV4-1; JV41; MADH1; MADR1

Note: Western Blot: Detects a band of approximately 52 kDa.

Protein Families: Cancer stem cells, Druggable Genome, ES Cell Differentiation/IPS, Stem cell relevant signaling - JAK/STAT signaling pathway, Stem cell relevant signaling - TGFb/BMP signaling pathway, Transcription Factors

Protein Pathways: TGF-beta signaling pathway

Product images:



Western Blot: SMAD1/5/8/9 Antibody TA336694 - Analysis using SMAD antibody. Lysate from A549 cells probed with antibody at 0.5 ug/ml. I goat anti-rabbit Ig HRP secondary antibody and PicoTect ECL substrate solution were used for this test.