

## Product datasheet for **TA336691**

### gamma Actin (ACTG1) Rabbit Polyclonal Antibody

#### Product data:

|                         |  |
|-------------------------|--|
| Product Type:           | Primary Antibodies   |
| Applications:           | IF, WB   |
| Recommended Dilution:   | WB: 1:5000-1:15000, Simple Western 1:100, IF: 1:50, IP: 1:10-1:500   |
| Reactivity:             | Human, Mouse   |
| Host:                   | Rabbit   |
| Clonality:              | Polyclonal   |
| Immunogen:              | The epitope recognized by this antibody maps to the N-terminus of human Actin Gamma 1 [UniProt# P63261]. The N-terminus of Actin Gamma 1 is highly conserved with Beta Actin and preliminary indications are that NB600-533 also recognizes Beta Actin (GeneID |
| Formulation:            | Tris-citrate/phosphate, pH 7, 0.1% Sodium azide. Store at 4C. Do not freeze.   |
| Concentration:          | lot specific   |
| Purification:           | Immunogen affinity purified  |
| Conjugation:            | Unconjugated   |
| Storage:                | Store at -20°C as received.  |
| Stability:              | Stable for 12 months from date of receipt.   |
| Predicted Protein Size: | 45 kDa   |
| Gene Name:              | actin gamma 1  |
| Database Link:          | <a href="#">NP_001605</a><br><a href="#">Entrez Gene 11465 Mouse</a> <a href="#">Entrez Gene 71 Human</a><br><a href="#">P63261</a>  |
| Background:             | This Actin Gamma 1 antibody serves as an excellent loading control.  |
| Synonyms:               | ACT; ACTG; BRWS2; DFNA20; DFNA26; HEL-176  |
| Note:                   | This Actin Gamma 1 antibody is useful for Immunocytochemistry/Immunofluorescence, Immunoprecipitation and Western Blot.  |



[View online »](#)

**Protein Pathways:**

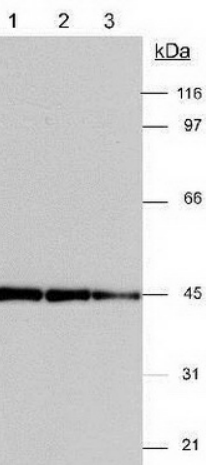
Adherens junction, Arrhythmogenic right ventricular cardiomyopathy (ARVC), Dilated cardiomyopathy, Focal adhesion, Hypertrophic cardiomyopathy (HCM), Leukocyte transendothelial migration, Pathogenic Escherichia coli infection, Regulation of actin cytoskeleton, Tight junction, Vibrio cholerae infection, Viral myocarditis

**Product images:**

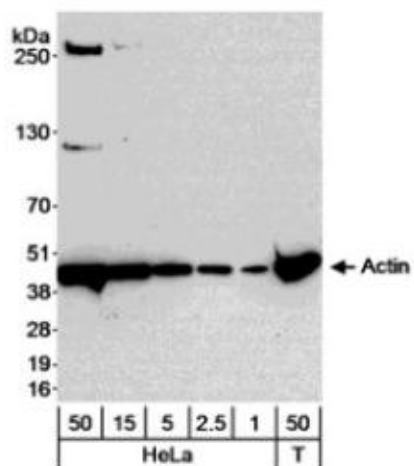
kDa HeLa 0.5 mg/ml

230-  
180-  
116-  
66-  
40-  
12-

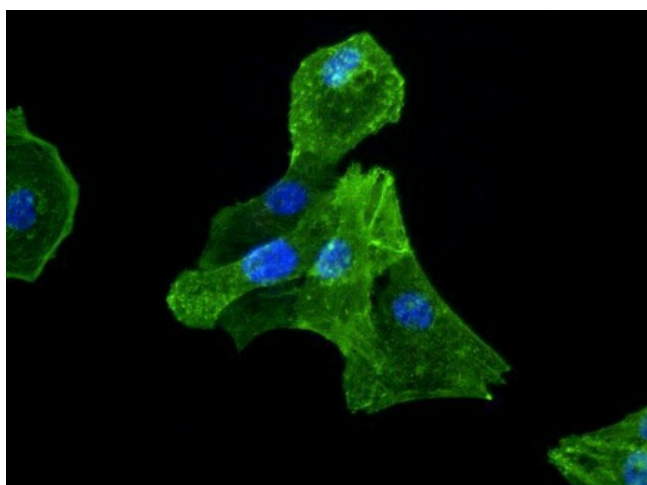
Simple Western: Actin Gamma 1 Antibody TA336691 - Simple Western lane view shows a specific band detected for Actin Gamma 1 in HeLa lysate. This experiment was performed under reducing conditions using the Wes or Sally Sue separation system 12-230kDa (



Western Blot: Actin Gamma 1 Antibody TA336691 - Actin Antibody TA336691-Detection of actin in 3T3 (20 ug) lysates. ECL detection 30 seconds. Lane 1 - 1:5,000 dilution Lane 2 - 1:10,000 dilution Lane 3 - 1:15,000 dilution



Western Blot: Actin Gamma 1 Antibody TA336691 - Whole cell lysate from HeLa (1, 2.5, 5, 15 and 50 ug) and mouse NIH3T3 cells (50 ug), probed with diluted at 0.04 ug/ml.



Immunocytochemistry/Immunofluorescence: Actin Gamma 1 Antibody TA336691 - Detection of Actin Gamma 1 (Green) in Hela cells using TA336691 at a 1:50 dilution. Nuclei (Blue) were counterstained using Hoechst 33258.