

Product datasheet for **TA336690**

beta Actin (ACTB) Rabbit Polyclonal Antibody

Product data:

Product Type:	Primary Antibodies
Applications:	WB
Recommended Dilution:	WB: 1:5000-1:15000
Reactivity:	Human, Mouse
Host:	Rabbit
Clonality:	Polyclonal
Immunogen:	A region corresponding to the N-terminus of human Beta Actin [UniProt# P60709]
Formulation:	Tris-citrate/phosphate, pH 7, 0.1% Sodium azide. Store at 4C. Do not freeze.
Concentration:	lot specific
Purification:	Immunogen affinity purified
Conjugation:	Unconjugated
Storage:	Store at -20°C as received.
Stability:	Stable for 12 months from date of receipt.
Predicted Protein Size:	40 kDa
Gene Name:	actin, beta
Database Link:	NP_001092 Entrez Gene 11461 Mouse Entrez Gene 60 Human P60709
Background:	In vertebrates 3 main groups of actin isoforms, alpha, beta and gamma have been identified. The alpha actins are found in muscle tissues and are a major constituent of the contractile apparatus. The beta and gamma actins coexist in most cell types as components of the cytoskeleton and as mediators of internal cell motility. Beta actins are highly conserved proteins that are involved in cell motility, structure and integrity. Beta actins are cytoplasmic proteins ubiquitously expressed in all eukaryotic cells. Polymerization of globular actin (G-actin) leads to a structural filament (F-actin) in the form of a two-stranded helix. Each actin can bind to 4 others. This antibody serves as an excellent loading control.
Synonyms:	BRWS1; PS1TP5BP1



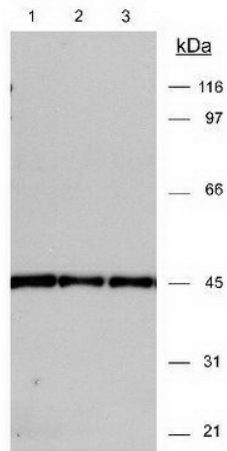
[View online »](#)

Note: This antibody is useful for Western Blot. A 40 kDa band is detected in HeLa whole cell lysate and mouse NIH3T3 cells. This antibody is also useful for immunocytochemistry/immunofluorescence.

Protein Families: ES Cell Differentiation/IPS

Protein Pathways: Adherens junction, Arrhythmogenic right ventricular cardiomyopathy (ARVC), Dilated cardiomyopathy, Focal adhesion, Hypertrophic cardiomyopathy (HCM), Leukocyte transendothelial migration, Pathogenic Escherichia coli infection, Regulation of actin cytoskeleton, Tight junction, Vibrio cholerae infection, Viral myocarditis

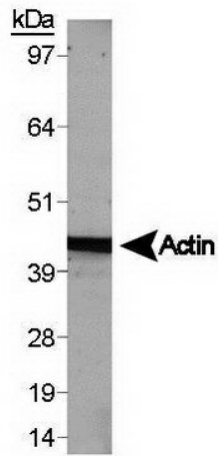
Product images:



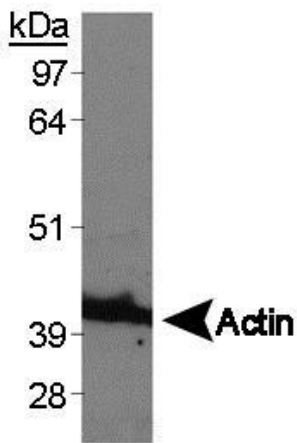
Western Blot: Beta Actin Antibody TA336690 - Detection of actin in 3T3 (20ug) lysates ECL detection 30 seconds. Lane 1 - 1:15,000 dilution Lane 2 - 1:10,000 dilution Lane 3 - 1:15,000 dilution



Western Blot: Beta Actin Antibody TA336690 - Detection of Beta Actin. Lane 1: 5ug, nuclear extract from mouse bone marrow derived macrophages. Lane 2: 10ug, cytoplasmic extract from mouse bone marrow derived macrophages. Image provided via product review



Western Blot: Beta Actin Antibody TA336690 - Western blot analysis of Actin (TA336690) using HepG2 whole cell lysate [NBP1-42569].



Western Blot: Beta Actin Antibody TA336690 - Western blot analysis of Actin (TA336690) using RCC4 whole cell lysate [NBP1-30412].