

## Product datasheet for **TA336689**

### beta Actin (ACTB) Rabbit Polyclonal Antibody

#### Product data:

Product Type:	Primary Antibodies
Applications:	Block/Neutralize, ELISA, FC, ICC/IF, IHC, IP, Simple Western, WB
Recommended Dilution:	Immunohistochemistry-Paraffin: 1:100, Proximity Ligation Assay, Simple Western: 1:12.5, Immunohistochemistry: 1:100, Immunocytochemistry/ Immunofluorescence, Immunoprecipitation: 1:10-1:500, Western Blot: 1:100-1:2000, Flow Cytometry: 1:10-1:1000, Block/Neutralize, ELISA
Reactivity:	Human, Mouse, Rat, Porcine, Avian, Hamster
Host:	Rabbit
Clonality:	Polyclonal
Immunogen:	A synthetic peptide made to an N-terminal region of human Beta Actin. [UniProt P60709].
Formulation:	Tris-citrate/phosphate, pH 7, 0.1% Sodium azide. Store at 4C. Do not freeze.
Concentration:	lot specific
Purification:	Immunogen affinity purified
Conjugation:	Unconjugated
Storage:	Store at -20°C as received.
Stability:	Stable for 12 months from date of receipt.
Gene Name:	actin, beta
Database Link:	<a href="#">NP_001092</a> <a href="#">Entrez Gene 11461 Mouse</a> <a href="#">Entrez Gene 81822 Rat</a> <a href="#">Entrez Gene 60 Human P60709</a>
Background:	Beta actin is one of six different actin isoforms which have been identified. Actins are highly conserved proteins that are involved in cell motility, structure, and integrity. Because beta actin is ubiquitously expressed in all eukaryotic cells, it is frequently used as a loading control for assays involving protein detection, such as Western blotting. Antibodies to beta-actin provide a specific and useful tool in studying the intracellular distribution of beta actin and the static and dynamic aspects of the cytoskeleton.
Synonyms:	BRWS1; PS1TP5BP1



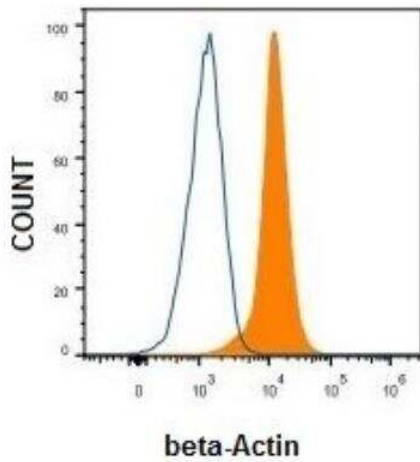
[View online »](#)

**Note:** Prior to immunostaining paraffin tissues, antigen retrieval with sodium citrate buffer (pH 6.0) is recommended. Immunocytochemistry/Immunofluorescence, Blocking/Neutralizing and Enzyme Immunoassay were reported in scientific literature. Customer review using ICC. Use in Proximity Ligation Assay reported in scientific literature (PMID 24740405)

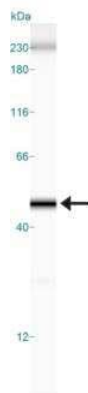
**Protein Families:** ES Cell Differentiation/IPS

**Protein Pathways:** Adherens junction, Arrhythmogenic right ventricular cardiomyopathy (ARVC), Dilated cardiomyopathy, Focal adhesion, Hypertrophic cardiomyopathy (HCM), Leukocyte transendothelial migration, Pathogenic Escherichia coli infection, Regulation of actin cytoskeleton, Tight junction, Vibrio cholerae infection, Viral myocarditis

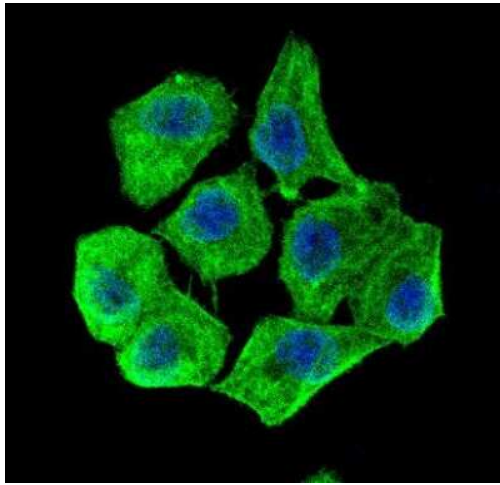
**Product images:**



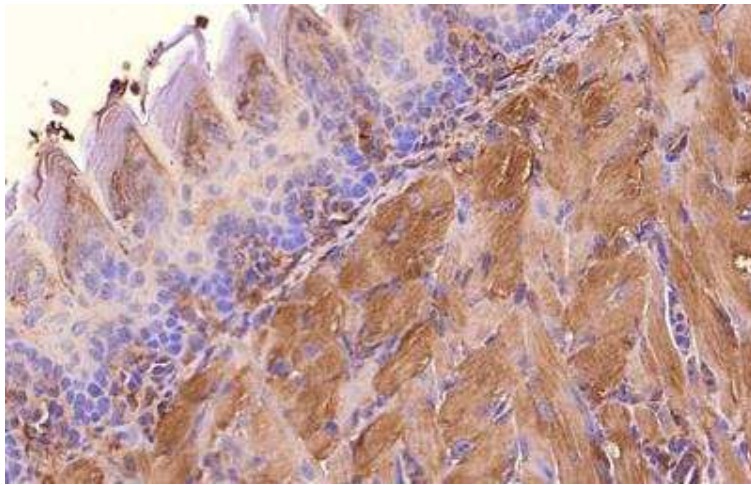
Flow Cytometry: beta-Actin Antibody TA336689 - Analysis of HeLa cells using mouse Monoclonal beta-Actin antibody (Orange) and Isotype control Antibody (Blue).



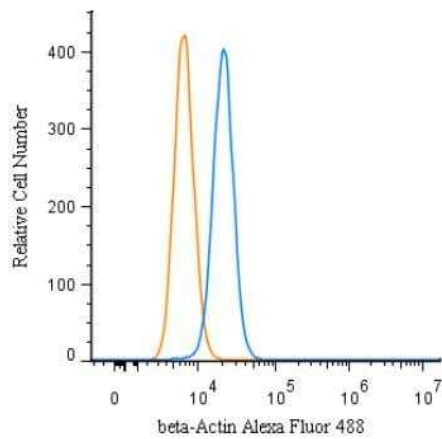
Simple Western: beta-Actin Antibody TA336689 - Simple Western lane view shows a specific band for Beta Actin in 0.1 mg/ml of HeLa lysate. This experiment was performed under reducing conditions using the 12-230 kDa separation system.



Immunocytochemistry/Immunofluorescence: beta-Actin Antibody TA336689 - IF Confocal analysis of HeLa cells using Beta Actin antibody (TA336689, 1:5). An Alexa Fluor 488-conjugated Goat to rabbit IgG was used as secondary antibody (green). DAPI was used to stain the cell nuclei (blue).

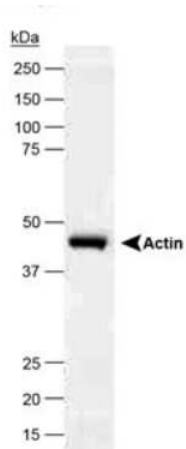


Immunohistochemistry-Paraffin: beta-Actin Antibody TA336689 - Analysis of Beta Actin in mouse epidermis using DAB with hematoxylin counterstain.

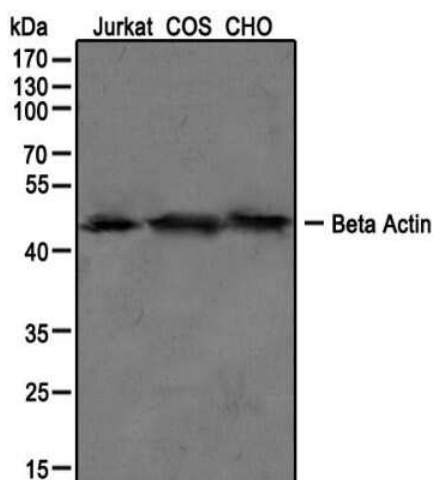


Copyright © 2018 Novus Biologicals

Flow Cytometry: beta-Actin Antibody TA336689 - An intracellular stain was performed on HeLa cells with beta-actin Antibody TA336689AF488 (blue) and a matched isotype control (orange). Cells were fixed with 4% PFA and then permeabilized with 0.1% saponin. Cells were incubated in an antibody dilution of 5 ug/mL for 30 minutes at room temperature. Both antibodies were conjugated to Alexa Fluor 488.



Western Blot: beta-Actin Antibody TA336689 - Rabbit polyclonal at 1/5000.



Western Blot: beta-Actin Antibody TA336689 - Western blot analysis of Jurkat, COS, and CHO cell lysate using beta actin antibody at 1:100.