

Product datasheet for **TA336688**

ZIC1 Rabbit Polyclonal Antibody

Product data:

Product Type:	Primary Antibodies
Applications:	ICC/IF, IHC, WB
Recommended Dilution:	Immunohistochemistry: 1:400, Immunocytochemistry/ Immunofluorescence: 1:10-1:500, Western Blot: 1:1000, Immunohistochemistry-Paraffin: 1:400, Immunohistochemistry-Frozen
Reactivity:	Human, Mouse
Host:	Rabbit
Clonality:	Polyclonal
Immunogen:	A synthetic peptide made to an internal portion of the human Zic1 protein (between residues 20-75) [UniProt Q15915]
Formulation:	PBS with 30% Glycerol, 0.05% Sodium Azide. Store at 4C short term. Aliquot and store at -20C long term. Avoid freeze-thaw cycles.
Concentration:	lot specific
Purification:	Affinity purified
Conjugation:	Unconjugated
Storage:	Store at -20°C as received.
Stability:	Stable for 12 months from date of receipt.
Gene Name:	Zic family member 1
Database Link:	NP_003403 Entrez Gene 22771 Mouse Entrez Gene 7545 Human Q15915



[View online »](#)

Background:

Zinc finger protein ZIC 1 (ZIC1) is a member of the ZIC family of C2H2-type zinc finger proteins. These proteins are particularly important during embryonic development. ZIC1 is a transcriptional activator via interaction with GLI1, GLI2, and GLI3. ZIC1 facilitates development and maturation of the cerebellum and spinal cord during organogenesis of the CNS. Within the pontine gray nucleus (PGN) ZIC1 plays a role in spatial distribution of mossy fiber neurons. The interaction between Zic and Gli family proteins are significant for molecular antagonistic and synergistic factors in development. Zic has been shown involvement in modulation of the hedgehog signaling pathway. ZIC1 may be found in the nucleus or in the cytoplasm in the presence of MDFIC overexpression. This protein is mainly found within the CNS and has high levels of expression in the cerebellum. In cancerous tissue, the ZIC1 protein is often found in medulloblastomas. ZIC1 has been used as aneuroepithelial marker.

Synonyms:

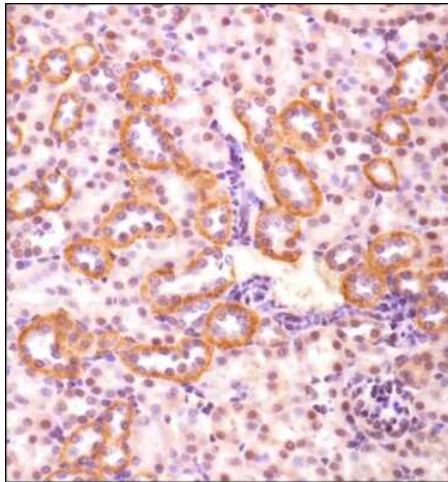
CRS6; ZIC; ZNF201

Note:

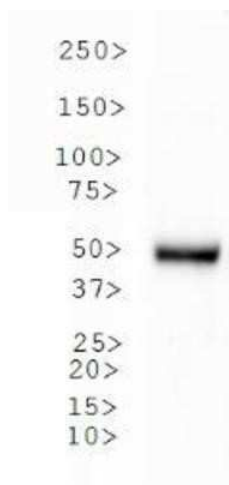
This Zic1 antibody is useful for Western Blot and Immunohistochemistry-paraffin sections. Prior to immunostaining paraffin tissues, antigen retrieval with sodium citrate buffer (pH 6.0) is recommended. Use in Immunohistochemistry-frozen sections was reported in the scientific literature (PMID: 23862012).

Protein Families:

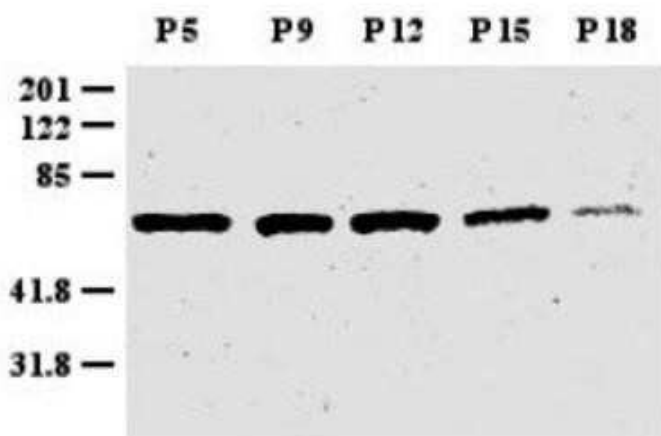
Druggable Genome

Product images:

Immunohistochemistry: ZIC1 Antibody TA336688
- IHC analysis of Zic1 in mouse kidney using DAB
with hematoxylin counterstain.



Western Blot: ZIC1 Antibody TA336688 - WB analysis of Zic1 in overexpression lysate.



Western Blot: ZIC1 Antibody TA336688 - Western blot analysis of Zic1 in mouse cerebellum extract. Protein extracts were prepared from mouse cerebellum between postnatal day 5 (P5) and P18, as indicated above the lanes.