

Product datasheet for **TA336681**

IKK gamma (IKBK γ) Rabbit Polyclonal Antibody

Product data:

Product Type:	Primary Antibodies
Applications:	WB
Recommended Dilution:	WB: 1:100-1:2000
Reactivity:	Human
Host:	Rabbit
Clonality:	Polyclonal
Immunogen:	N-terminus of the human IKK-gamma protein (proprietary).
Formulation:	PBS, 0.05% Sodium Azide. Store at 4C short term. Aliquot and store at -20C long term. Avoid freeze-thaw cycles.
Concentration:	lot specific
Purification:	Immunogen affinity purified
Conjugation:	Unconjugated
Storage:	Store at -20°C as received.
Stability:	Stable for 12 months from date of receipt.
Predicted Protein Size:	45 kDa
Gene Name:	inhibitor of kappa light polypeptide gene enhancer in B-cells, kinase gamma
Database Link:	NP_001093326 Entrez Gene 8517 Human Q9Y6K9
Background:	Pro-inflammatory cytokines activate the transcription factor NF-kappa B by stimulating the activity of a protein kinase that phosphorylates Ikkappa B, an inhibitor of NF-kappa B, at sites that trigger its ubiquitination and degradation. A large, cytokine-responsive Ikkappa B kinase (IKK) complex has been purified and the genes encoding 2 of its subunits have been cloned. These subunits, IKK-alpha and Ikk-beta, are protein kinases whose function is needed for NF-kappa B activation by pro-inflammatory stimuli. IKK is composed of similar amounts of IKK-alpha, Ikk-beta, which are differentially processed forms of a third subunit, IKK-gamma. Ikk-gamma interacts preferentially with IKK-beta and is required for the activation of the IKK complex.



[View online »](#)

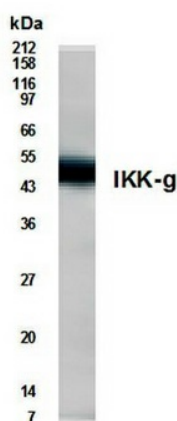
Synonyms: AMCBX1; FIP-3; FIP3; Fip3p; IKK-gamma; IKKAP1; IKKG; IMD33; IP; IP1; IP2; IPD2; NEMO; ZC2HC9

Note: Western blot - Use at 1:500 to 1:1,000 dilution. However, the investigator should determine the optimal dilution for a specific application such as immunohistochemistry.

Protein Families: Druggable Genome, Transcription Factors

Protein Pathways: Acute myeloid leukemia, Adipocytokine signaling pathway, Apoptosis, B cell receptor signaling pathway, Chemokine signaling pathway, Chronic myeloid leukemia, Cytosolic DNA-sensing pathway, Epithelial cell signaling in Helicobacter pylori infection, MAPK signaling pathway, NOD-like receptor signaling pathway, Pancreatic cancer, Pathways in cancer, Primary immunodeficiency, Prostate cancer, RIG-I-like receptor signaling pathway, Small cell lung cancer, T cell receptor signaling pathway, Toll-like receptor signaling pathway

Product images:



Western Blot: IKK-gamma Antibody TA336681 - WB detection of IKK-gamma in Interleukin 1 stimulated 293 cells at 1:500 dilution.